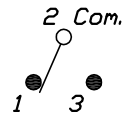


RECOMMENDED P.C.B. LAYOUT



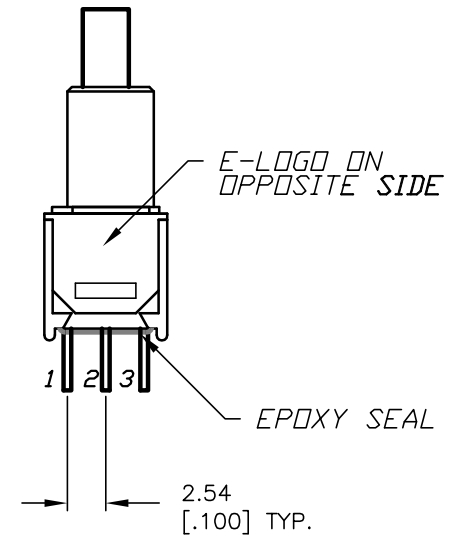
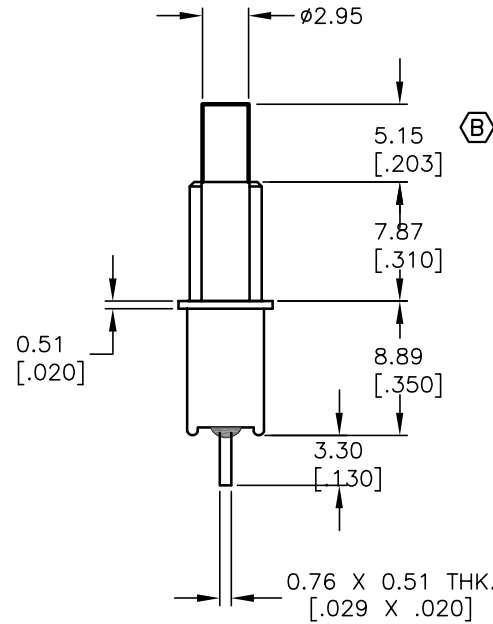
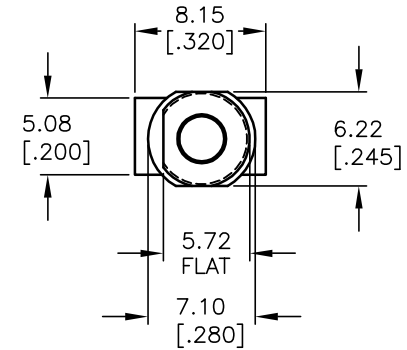
CIRCUIT: SPDT

SWITCH FUNCTION	
DN	<DN>
2-1	2-3

< > = MOMENTARY

NOTES:

1. ALL DIMENSIONS IN MM [INCH]
2. GENERAL TOLERANCE: X.X=±0.4
X.XX=±0.25
3. TERM. NOS. FOR REF. ONLY
4. RATING: 0.4VA @20V AC or DC max.
5. FIXED TERM. & MOVING CONTACT:
Copper Alloy w/Gold plate over Nickel plate.
6. CONTACT RESISTANCE:
20mLLI-ohms initial @2-4VDC.
7. ELECTRICAL LIFE: 60,000 make-and-break cycles at full load.
8. INSULATION RESISTANCE: 1,000M ohm min.
9. DIELECTRIC STRENGTH: 1000V RMS @sea level
10. OPERATING TEMP.: -30°C to 85°C



E-SWITCH®

B	13700	CORRECT ACTUATOR	1/12/04	AR
A	12545	RELEASED	11/8/02	CJB
REV.	ECN No.	DESCRIPTION	DATE	CHKD

TITLE 800 SP-8 B8 M2 RE <GOLD CONTACTS>

SCALE	DATE	DR	DWG	REV
2:1	11/6/02	CB	T822031	B

THE INFORMATION CONTAINED IN THIS DOCUMENT IS PROPRIETARY TO E-SWITCH AND IS NOT TO BE COPIED OR TRANSFERRED