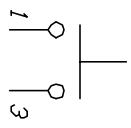
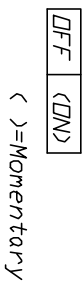


RECOMMENDED P.C.B. LAYOUT

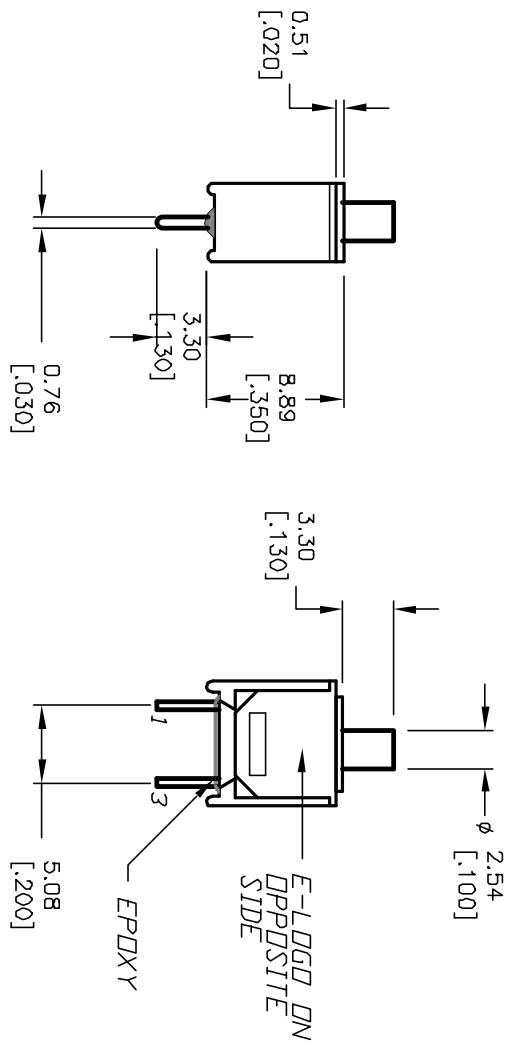
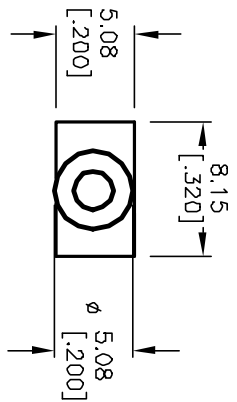


CONTACT CONFIGURATION



NOTES:

1. ALL DIMENSIONS IN MM [INCH]
2. GENERAL TOLERANCE: X.X=±0.4
X.XX=±0.25
3. TERM. NOS. FOR REF. ONLY
4. RATING: 0.4(VA) @20V max. (AC or DC)
5. FIXED TERM. & MOVING CONTACT:
Copper Alloy w/GOLD plating over
Nickel plating.
6. CONTACT RESISTANCE:
20mILLI-ohms initial @2-4VDC.
7. ELECTRICAL LIFE: 60,000 make-and-break
cycles at full load.
8. INSULATION RESISTANCE: 1,000M ohm min.
9. DIELECTRIC STRENGTH: 1000V RMS @sea level
10. OPERATING TEMP.: -30°C to 85°C



E-SWITCH®

REV.	ECN No.	DESCRIPTION	DATE	CHKD
B	12328	REVISED AND REDRAWN	7/23/02	CJB
THE INFORMATION CONTAINED IN THIS DOCUMENT IS PROPRIETARY TO E-SWITCH AND IS NOT TO BE COPIED OR TRANSFERRED				

TITLE	SCALE	DATE	DR	DWG	REV
800 SP-9 B10 M2 R E (GOLD CONTACTS)	2:1	--	--	T811015	B