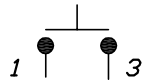
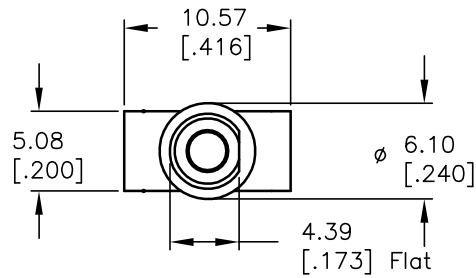


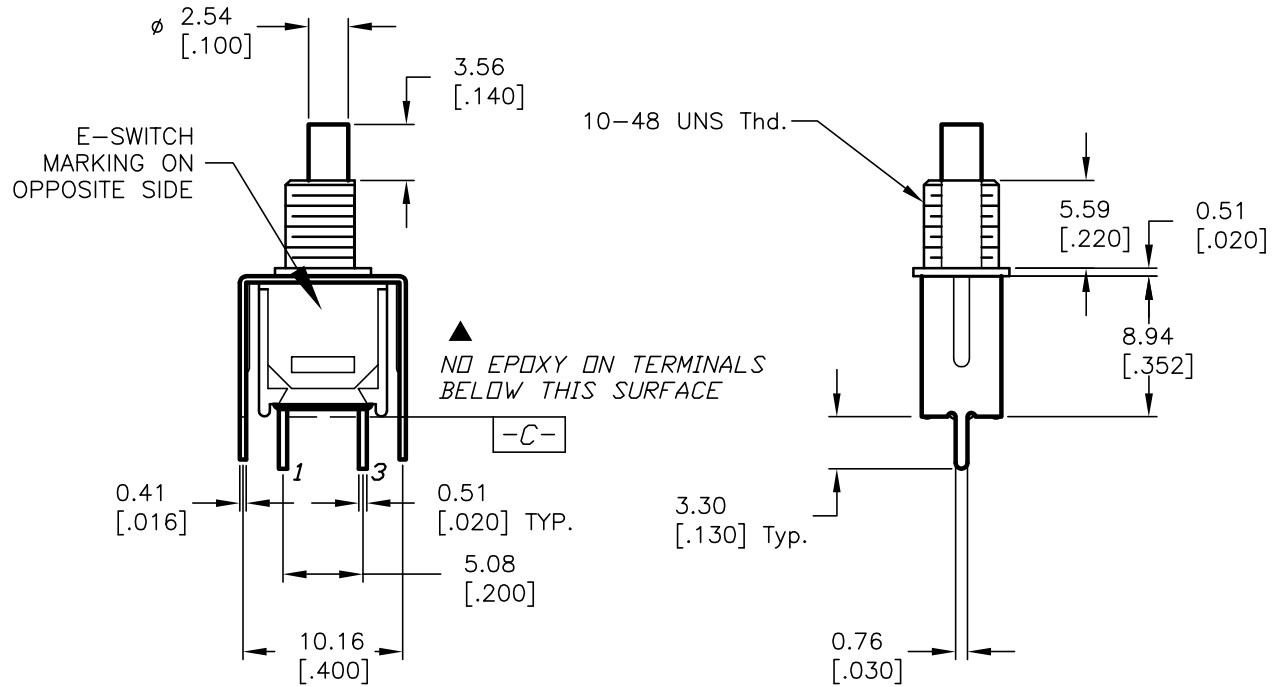
RECOMMENDED P.C.B. LAYOUT



CIRCUIT: SPDT

SWITCH FUNCTION	
OFF	(ON)

() = MOMENTARY



NOTES:

1. ALL DIMENSIONS IN MM [INCH]
2. GENERAL TOLERANCE: X.X=±0.4
X.XX=±0.25
3. TERM. NOS. FOR REF. ONLY
4. RATING: 0.4 (VA) max. @20VAC or DC
- ▲ 5. FIXED TERM. & MOVING CONTACT:
Copper Alloy w/GOLD plate over Nickel plate.
6. CONTACT RESISTANCE: 20mILLI-ohms initial @2-4VDC.
7. ELECTRICAL LIFE: 60,000 make-and-break cycles at full load.
8. INSULATION RESISTANCE: 1,000M ohm min.
9. DIELECTRIC STRENGTH: 1000V RMS @sea level
10. OPERATING TEMP.: -30°C to 85°C

E-SWITCH®

REV.	ECN No.	DESCRIPTION	DATE	CHKD
B	11853	REVISED	12/11/01	CJB

TITLE				
800 SP-9 B5 VS2 R E				
SCALE	DATE	DR	DWG	REV
2:1	12/11/01	CB	T811040	B

THE INFORMATION CONTAINED IN THIS DOCUMENT IS PROPRIETARY TO E-SWITCH AND IS NOT TO BE COPIED OR TRANSFERRED