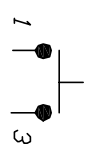
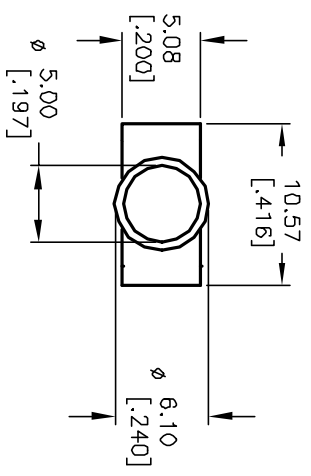


RECOMMENDED P.C.B. LAYOUT



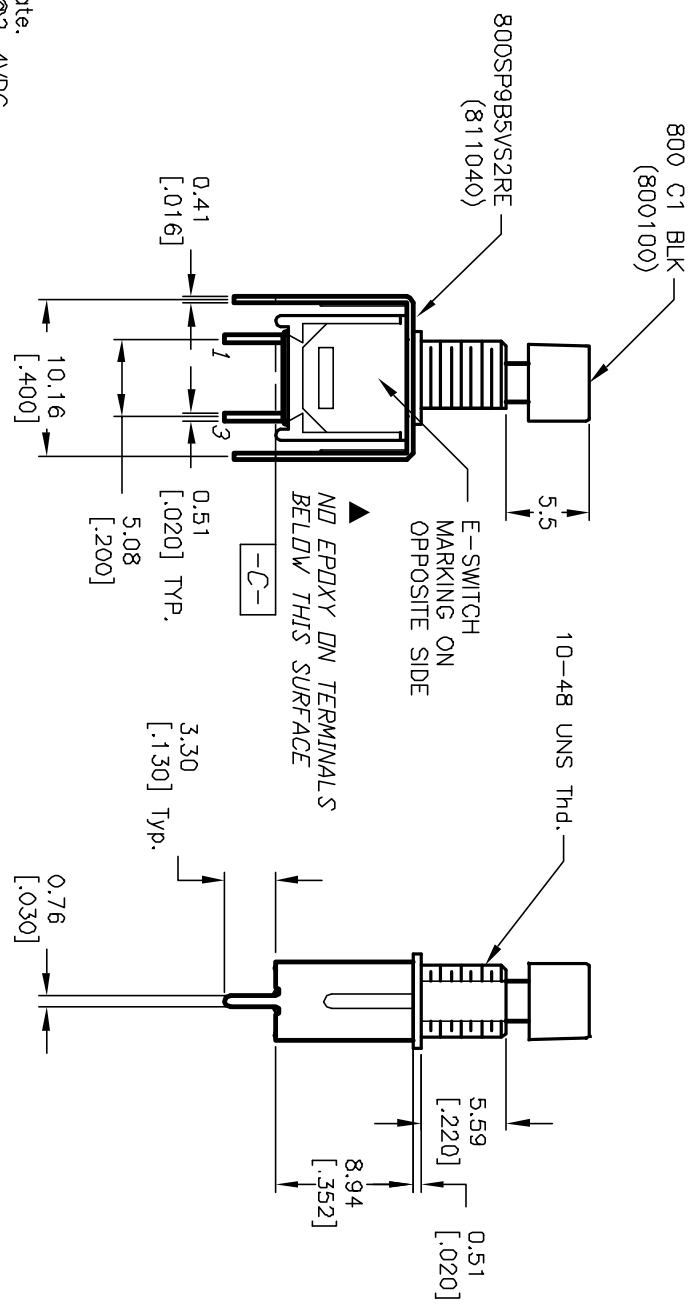
CIRCUIT: SPDT

SWITCH FUNCTION
OFF
<DN>

< > =MOMENTARY

NOTES:

1. ALL DIMENSIONS IN MM [INCH]
2. GENERAL TOLERANCE: X.X=±0.4
X.XX=±0.25
3. TERM. NDS. FOR REF. ONLY
4. RATING: 0.4 (VA) max. @20VAC or DC
5. FIXED TERM. & MOVING CONTACT:
Copper Alloy w/GOLD plate over Nickel plate.
6. CONTACT RESISTANCE: 20MILLI-ohms initial @2-4VDC.
7. ELECTRICAL LIFE: 60,000 make-and-break cycles at full load.
8. INSULATION RESISTANCE: 1,000M ohm min.
9. DIELECTRIC STRENGTH: 1000V RMS @sed level
10. OPERATING TEMP.: -30°C to 85°C



E-SWITCH®

REV.	ECN No.	DESCRIPTION	DATE	CHKD	SCALE	DATE	DR	DWG	REV
A	11958	RELEASED FOR PRODUCTION	2/7/02	CJB	2:1	2/7/02	CB	XT0095P	A
TITLE: 800 SP-9 B5 VS2 R E /C1 BLK									
THE INFORMATION CONTAINED IN THIS DOCUMENT IS PROPRIETARY TO E-SWITCH AND IS NOT TO BE COPIED OR TRANSMITTED									