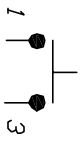
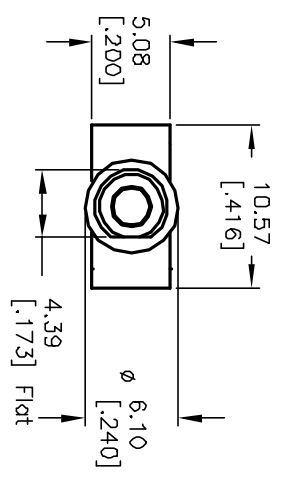


RECOMMENDED P.C.B. LAYOUT



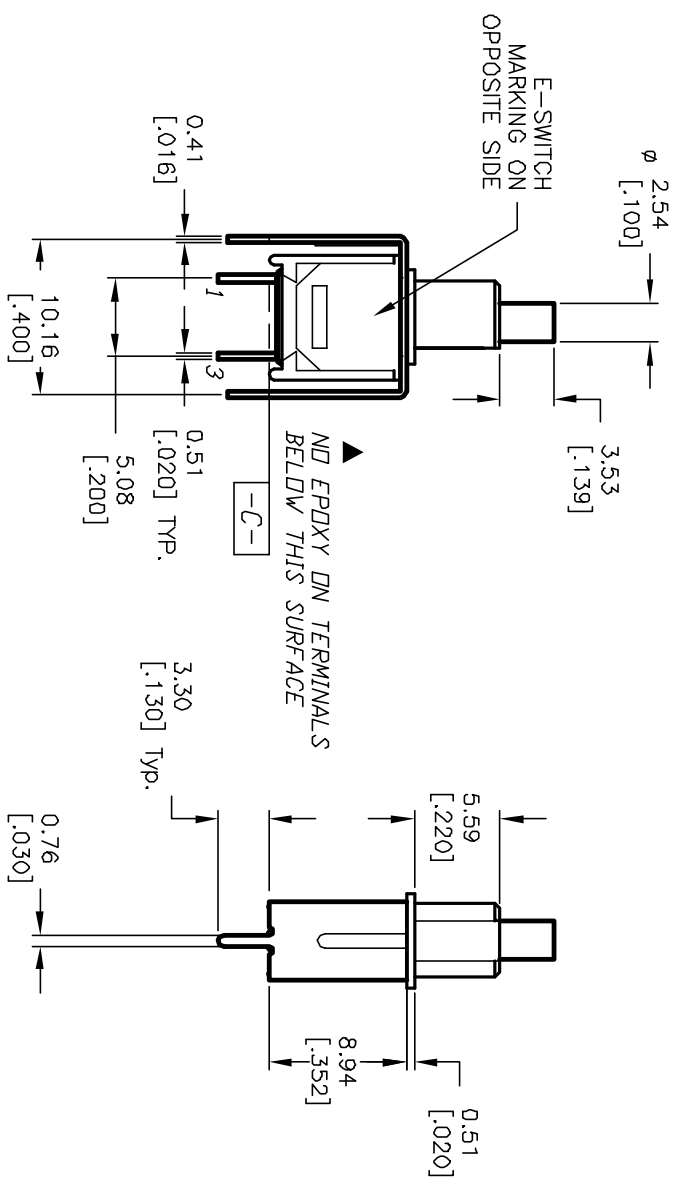
CIRCUIT: SPDT

SWITCH FUNCTION	
OFF	<DN>

< > = MOMENTARY

NOTES:

1. ALL DIMENSIONS IN MM [INCH]
2. GENERAL TOLERANCE: X.X=±0.4 X.XX=±0.25
3. TERM. NOS. FOR REF. ONLY
4. RATING: 3A @120VAC or 28VDC; 1A @250VAC.
5. FIXED TERM. & MOVING CONTACT: Copper Alloy w/Silver plate.
6. CONTACT RESISTANCE: 20mΩ—ohms initial @2-4VDC.
7. ELECTRICAL LIFE: 60,000 make-and-break cycles at full load.
8. INSULATION RESISTANCE: 1,000M ohm min.
9. DIELECTRIC STRENGTH: 1000V RMS @sea level
10. OPERATING TEMP.: -30°C to 85°C



E-SWITCH®

REV.	ECN No.	DESCRIPTION	DATE	CHKD
A	11853	RELEASED FOR PRODUCTION	12/11/01	CJB

TITLE	SCALE	DATE	DR	DWG	REV
800 SP-9 B6 VS2 Q E	2:1	12/11/01	CB	T811034	A

THE INFORMATION CONTAINED IN THIS DOCUMENT IS PROPRIETARY TO E-SWITCH AND IS NOT TO BE COPIED OR TRANSFERRED