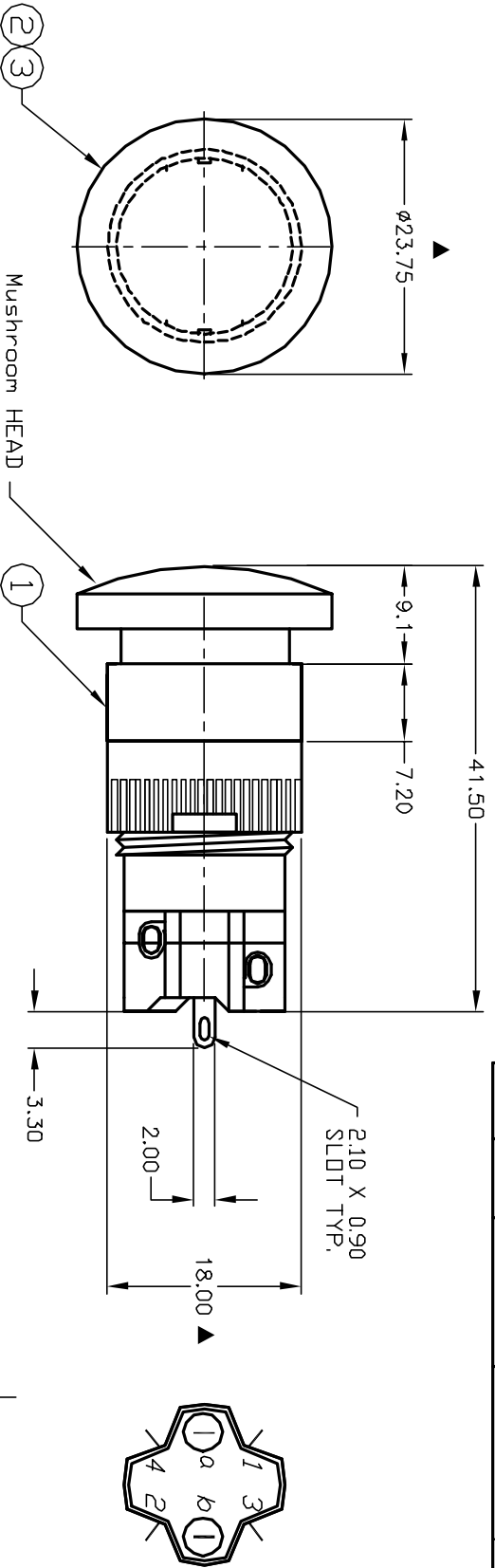
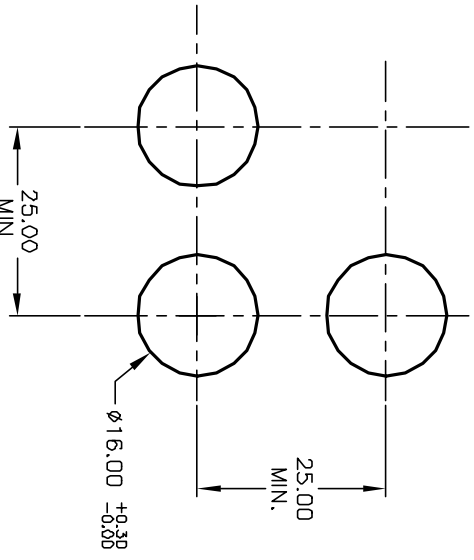
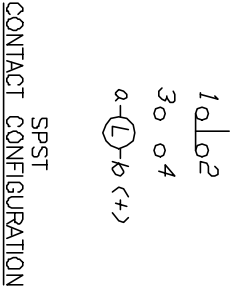


ITEM	QTY.	PART NO.	PART DESCRIPTION
1	1	F040006	D16 EE R1 1
2	1	F050420	50-004-20 (RED LED BULB)
3	1	F051202	50-012-02 (TRANSPARENT RED LENS)



NOTES:

1. ALL DIMENSIONS IN MM
2. GENERAL TOLERANCE: X.X=±0.4  
X.XX=±0.25
3. RATINGS: 5A @250V AC  
8A @125V AC  
UL, VDE, CSA, Semko, Nemko, Demko, Fimko Approved
5. LAMP VOLTAGE: 110V AC (NEON BULB)
6. CONTACT MATERIAL:  
COPPER ALLOY w/Silver Plating
7. ▲ DENOTES CRITICAL PARAMETER.



**E-SWITCH**®

D16EER1JREDRED

REV.	ECN No.	DESCRIPTION	DATE	CHKD	AR
A	13223	RELEASED FOR PRODUCTION	6/17/03		AR

TITLE	SCALE	DATE	DR	DWG	REV
D16EER1JREDRED	1.5:1	6/17/03	AR	XF0556A	A

THE INFORMATION CONTAINED IN THIS DOCUMENT IS PROPRIETARY TO E-SWITCH AND IS NOT TO BE COPIED OR TRANSFERRED