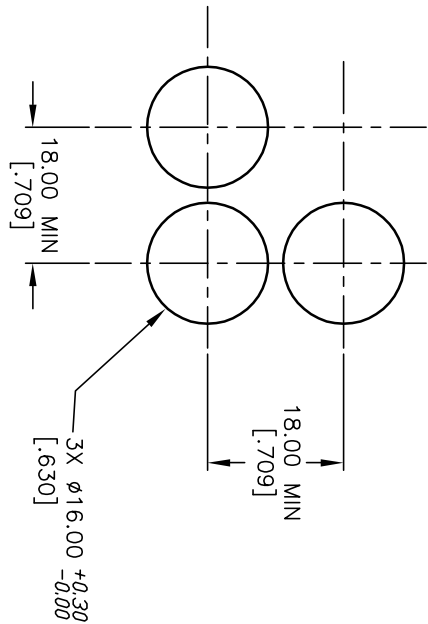


ITEM	QTY.	PART NO.	PART DESCRIPTION
1	1	F040005	D16 E S11
2	1	F050422	50-004-22 (GREEN LED)
3	1	F050312	50-003-12 (GREEN TRANSPARENT)



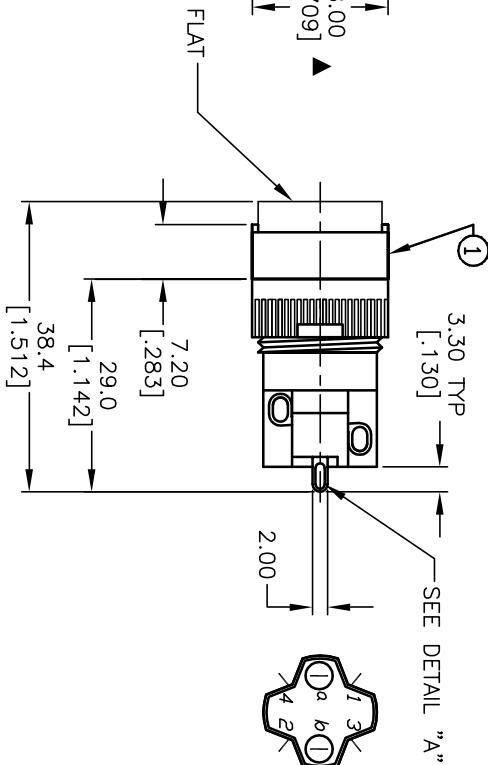
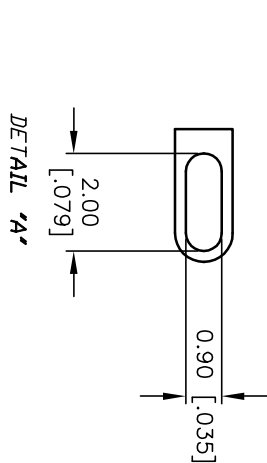
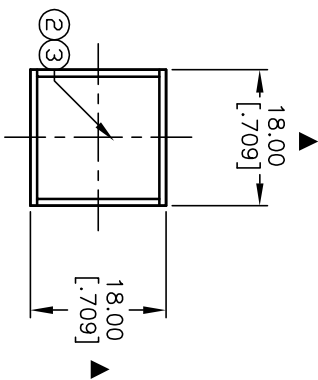
RECOMMENDED
PANEL MOUNTING

1 0 0 2
3 0 0 4
a-(L)-b (+)

CONTACT CONFIGURATION

NOTES:

1. ALL DIMENSIONS IN MM [INCH]
2. GENERAL TOLERANCE: X.X=±0.4
X.XX=±0.25
3. TERM. NOS. FOR REFERENCE ONLY.
4. RATINGS: 5A@250V AC/ 8A@125V AC
5. TRAVEL: 3.0MM
6. MECHANICAL LIFETIME: > 2 MILLION OPERATIONS
7. LAMP VOLTAGE: 24V DC
8. ▲ DENOTES CRITICAL PARAMETER.



TITLE

D16EES11KGRNGRN

E-SWITCH®

REV.	ECN No.	DESCRIPTION	DATE	CHKD	AR
A	13337	RELEASED FOR PRODUCTION	8/1/03		

SCALE	DATE	DR	DWG	REV
1:1	8/1/03	AR	XF0154P	A

THE INFORMATION CONTAINED IN THIS DOCUMENT IS PROPRIETARY TO E-SWITCH AND IS NOT TO BE COPIED OR TRANSFERRED