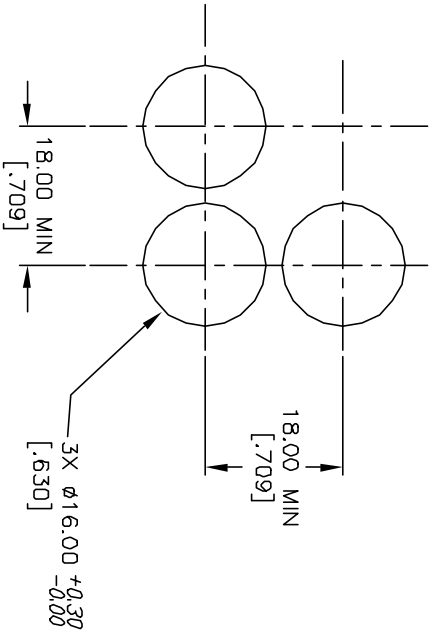
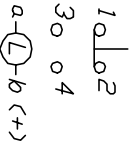


ITEM	QTY.	PART NO.	PART DESCRIPTION
1	1	F040005	D16 E S11
2	1	F050424	50-004-24 (YEL LED)
3	1	F050316	50-003-16 (YEL TRANSPARENT)



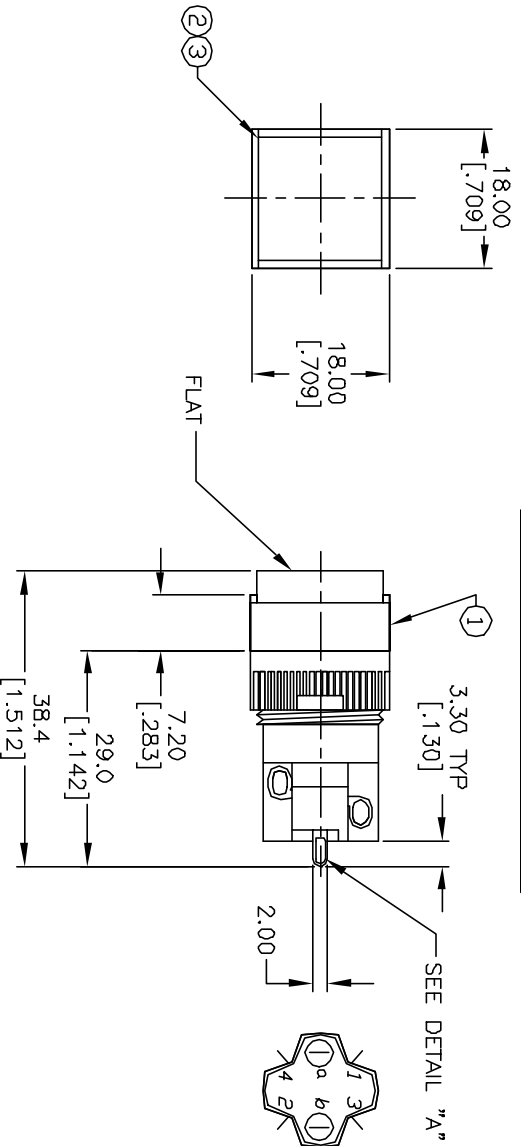
RECOMMENDED  
PANEL MOUNTING



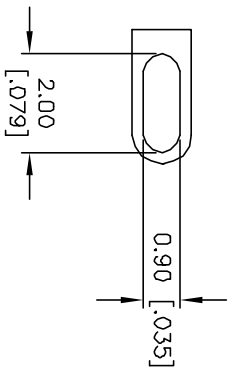
CONTACT CONFIGURATION

NOTES:

1. ALL DIMENSIONS IN MM [INCH]
2. GENERAL TOLERANCE: X.X=±0.4  
X.XX=±0.25
3. TERM. NOS. FOR REFERENCE ONLY.
4. RATINGS: 5A@250V AC/ 8A@125V AC
5. TRAVEL: 3.0MM
6. MECHANICAL LIFETIME: > 2 MILLION OPERATIONS
7. LAMP VOLTAGE: 24V DC



DETAIL "A"



**E-SWITCH®**

REV.	ECN No.	DESCRIPTION	DATE	CHKD	TITLE	SCALE	DATE	DR	DWG	REV
A	11883	RELEASED FOR PRODUCTION	12/29/01	RSB	D16 EE S11 K YEL YEL (LATCHING)	1:1	12/29/01	RSB	XF0430P	A
<p>THE INFORMATION CONTAINED IN THIS DOCUMENT IS PROPRIETARY TO E-SWITCH AND IS NOT TO BE COPIED OR TRANSFERRED</p>										