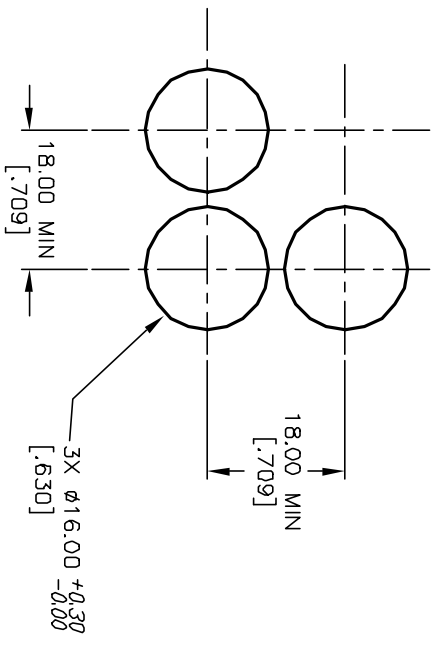
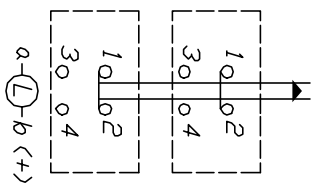


| PARTS LIST | | | |
|------------|------|----------|-----------------------------|
| ITEM | QTY. | PART NO. | PART DESCRIPTION |
| 1 | 1 | F040020 | D16 EE S12 |
| 2 | 1 | F050304 | 50-003-04 (RED TRANSPARENT) |
| 3 | 1 | F050403 | 50-004-03 (INCANDESCENT) |



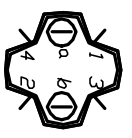
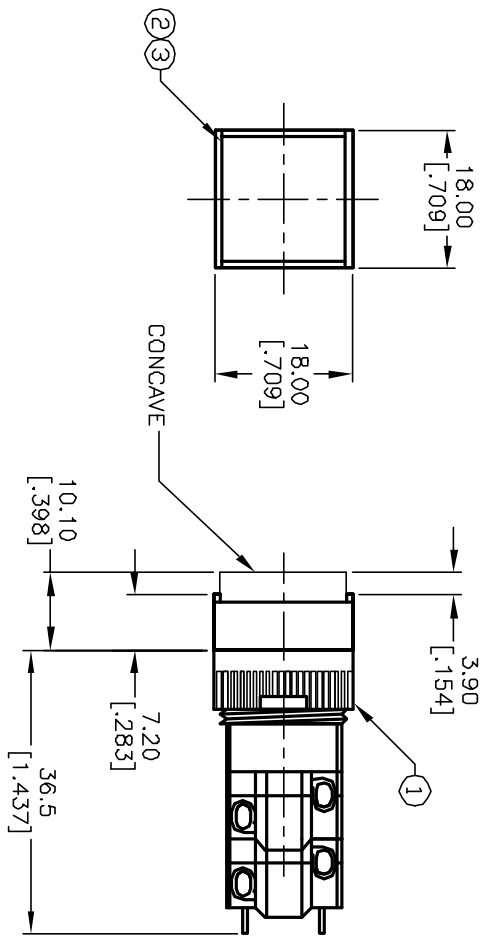
RECOMMENDED
PANEL MOUNTING



CONTACT CONFIGURATION

NOTES:

1. ALL DIMENSIONS IN MM [INCH]
2. GENERAL TOLERANCE: X.X=±0.4
X.XX=±0.25
3. TERM. NOS. FOR REFERENCE ONLY.
4. RATINGS: 5A@250V AC/ 8A@125V AC
5. TRAVEL: 3.0MM
6. MECHANICAL LIFETIME: > 2 MILLION OPERATIONS
7. LAMP VOLTAGE: 14V DC



| REV. | ECN No. | DESCRIPTION | DATE | CHKD |
|------|---------|-------------------------|---------|------|
| A | 13088 | RELEASED FOR PRODUCTION | 4/25/03 | AR |

| TITLE | SCALE | DATE | DR | DWG | REV |
|-----------------------------|-------|---------|----|---------|-----|
| D16 EE S12 N RED (LATCHING) | 1.5:1 | 4/25/03 | AR | XF0410P | A |

E-SWITCH®

THE INFORMATION CONTAINED IN THIS DOCUMENT IS PROPRIETARY TO E-SWITCH AND IS NOT TO BE COPIED OR TRANSFERRED