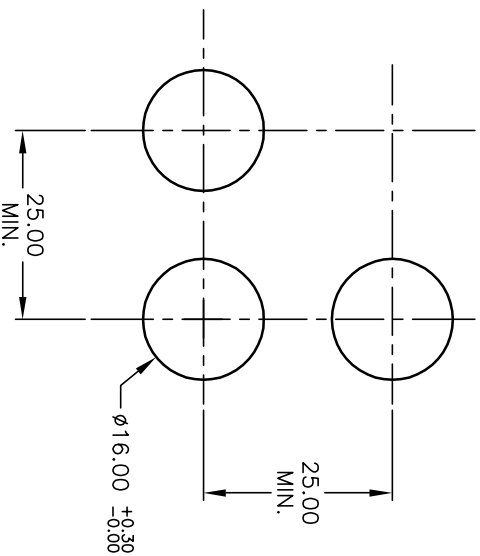
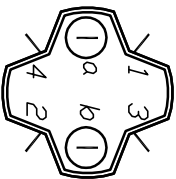
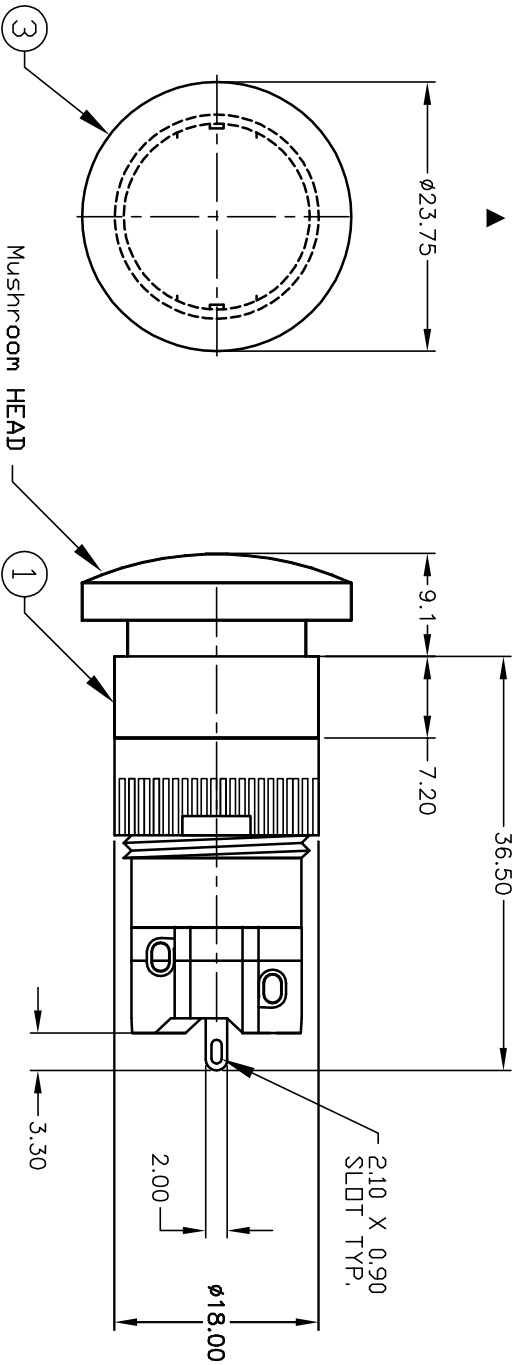


PARTS LIST			
ITEM	QTY.	PART NO.	PART DESCRIPTION
1	1	F040009	D16 OA R1 1
2	1	F050419	50-004-19 (GRN LED)
3	1	F051211	50-012-11 (Transparent GRN lens)



1 o l o 2
3 o o 4
a-(L)-b (+)

SPST
CONTACT CONFIGURATION

RECOMMENDED PANEL MOUNTING
SCALE 1:1

- NOTES:
1. ALL DIMENSIONS IN MM
 2. GENERAL TOLERANCE: X.X=±0.4
X.XX=±0.25
 3. RATINGS: 5A @250V AC
8A @125V AC
UL, VDE, CSA, Semko, Nemko, Demko, Firmko Approved
 4. CONTACT MATERIAL:
COPPER ALLOY W/Silver Plating
 5. LAMP VOLTAGE: 12V DC
 6. ▲ DENOTES CRITICAL PARAMETER.

A	13359	RELEASED FOR PRODUCTION	8/11/03	AR
REV.	ECN No.	DESCRIPTION	DATE	CHKD

TITLE				
D160AR1JGRNGRN				
SCALE 1.5:1				
DATE	DR	DWG	REV	
8/11/03	AR	XF0563A	A	

E-SWITCH®

THE INFORMATION CONTAINED IN THIS DOCUMENT IS PROPRIETARY TO E-SWITCH AND IS NOT TO BE COPIED OR TRANSFERRED