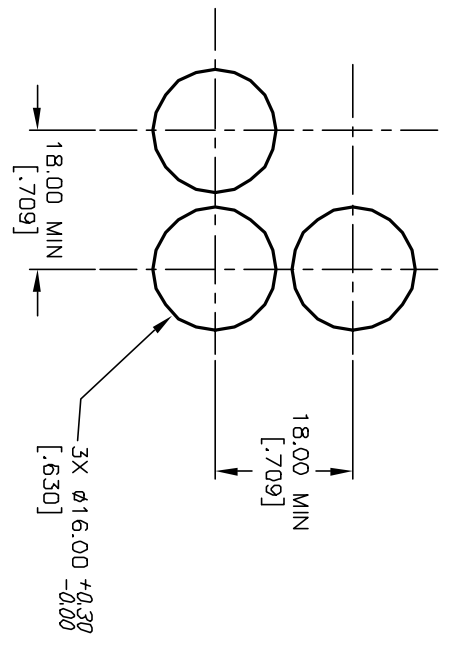
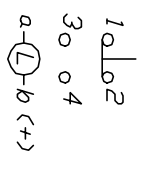


| ITEM | QTY. | PART NO. | PART DESCRIPTION            |
|------|------|----------|-----------------------------|
| 1    | 1    | F040008  | D16 0A S11                  |
| 2    | 1    | F050418  | 50-004-18 (YELLOW LED)      |
| 3    | 1    | F050315  | 50-003-15 (WHT TRANSPARENT) |



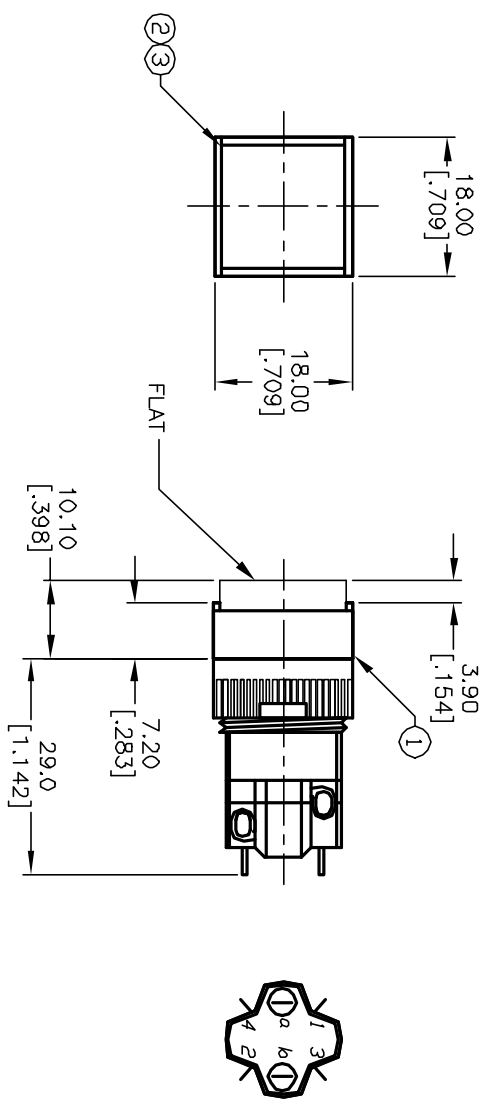
RECOMMENDED  
PANEL MOUNTING



CONTACT CONFIGURATION

NOTES:

1. ALL DIMENSIONS IN MM [INCH]
2. GENERAL TOLERANCE: X.X=±0.4  
X.XX=±0.25
3. TERM. NOS. FOR REFERENCE ONLY.
4. RATINGS: 5A@250V AC/ 8A@125V AC
5. TRAVEL: 3.0MM
6. MECHANICAL LIFETIME: > 2 MILLION OPERATIONS
7. LAMP VOLTAGE: 6V DC



**E-SWITCH®**

|                                                                                                              |  |                         |  |                                  |  |         |  |
|--------------------------------------------------------------------------------------------------------------|--|-------------------------|--|----------------------------------|--|---------|--|
| REV. A                                                                                                       |  | RELEASED FOR PRODUCTION |  | 4/15/02                          |  | CJC     |  |
| REV. A                                                                                                       |  | DESCRIPTION             |  | DATE                             |  | CHKD    |  |
| THE INFORMATION CONTAINED IN THIS DOCUMENT IS PROPRIETARY TO E-SWITCH AND IS NOT TO BE COPIED OR TRANSFERRED |  |                         |  |                                  |  |         |  |
| TITLE                                                                                                        |  |                         |  | D16 0A S11 H YEL WHT (MOMENTARY) |  |         |  |
| SCALE                                                                                                        |  | DATE                    |  | DR                               |  | DWG     |  |
| 1.5:1                                                                                                        |  | 4/15/02                 |  | CJC                              |  | XF0440A |  |
| REV A                                                                                                        |  |                         |  |                                  |  |         |  |