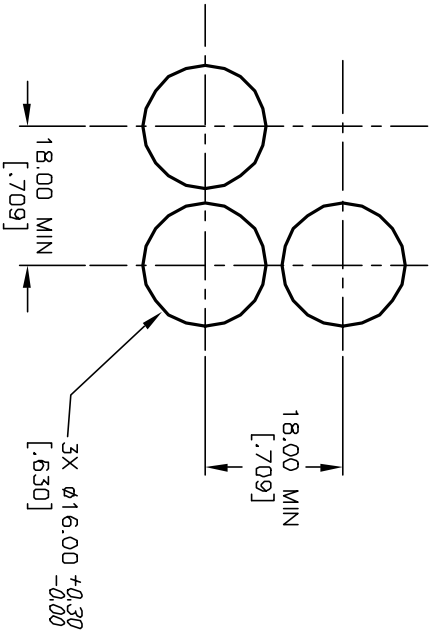
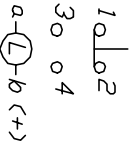


PARTS LIST

ITEM	QTY.	PART NO.	PART DESCRIPTION
1	1	F040008	D16 0A S11
2	1	F050420	50-004-20 (RED LED)
3	1	F050314	50-003-14 (RED TRANSPARENT)



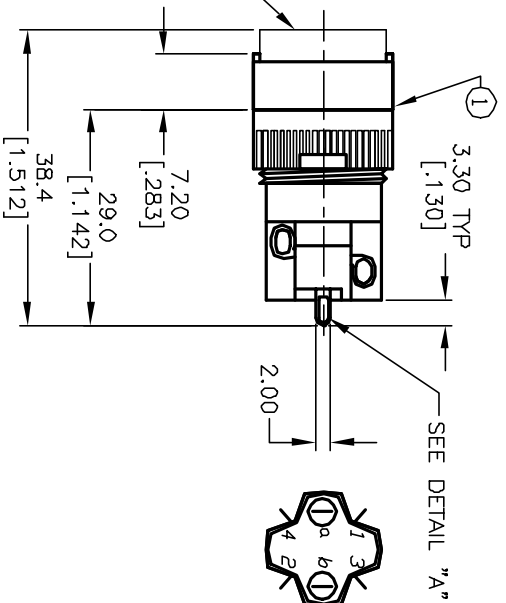
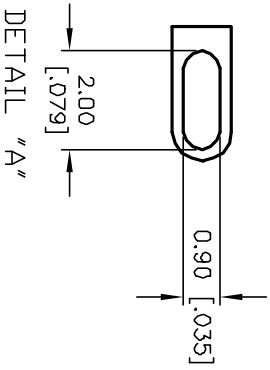
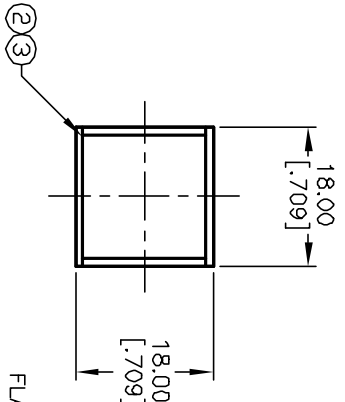
RECOMMENDED
PANEL MOUNTING



CONTACT CONFIGURATION

NOTES:

1. ALL DIMENSIONS IN MM [INCH].
2. GENERAL TOLERANCE: X.X=±0.4.
X.XX=±0.25.
3. TERM. NOS. FOR REFERENCE ONLY.
4. RATINGS: 5A@250V AC/ 8A@125V AC.
5. TRAVEL: 3.0MM.
6. MECHANICAL LIFETIME: > 2 MILLION OPERATIONS.
7. LAMP VOLTAGE: 12V DC.



E-SWITCH®

REV.	ECN No.	DESCRIPTION	DATE	CHKD	SCALE	DATE	DR	DWG	REV
A	11882	RELEASED FOR PRODUCTION	12/29/01	RSB	1.5:1	12/29/01	RSB	XF0428P	A

THE INFORMATION CONTAINED IN THIS DOCUMENT IS PROPRIETARY TO E-SWITCH AND IS NOT TO BE COPIED OR TRANSFERRED