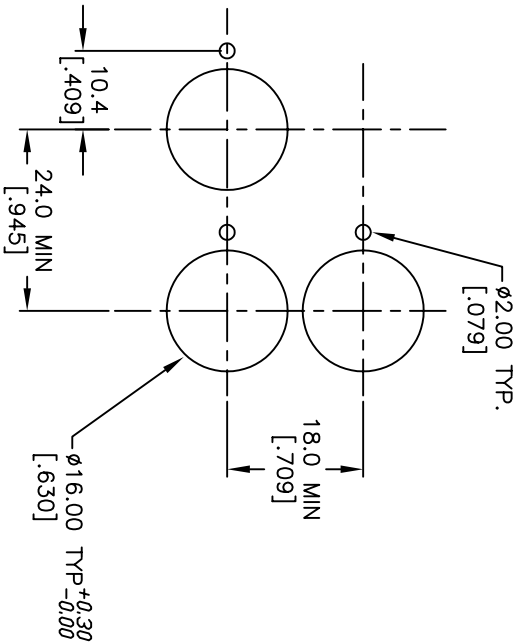
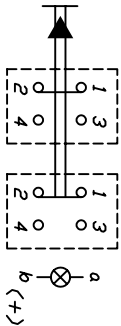


| ITEM | QTY. | PART NO. | PART DESCRIPTION |
|------|------|----------|----------------------------------|
| 1 | 1 | F040035 | D16 OA T12 |
| 2 | 1 | F050405 | 50-004-05 (INCANDESCENT BULB) |
| 3 | 1 | F050216 | 50-002-16 (YEL LENS TRANSPARENT) |

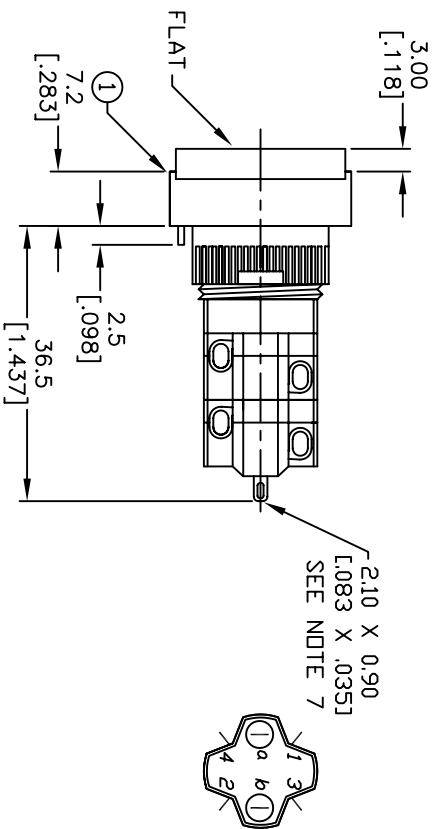
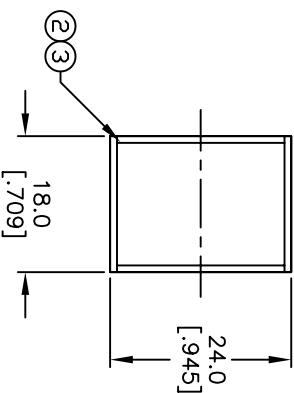


RECOMMEND PANEL MOUNTING



CIRCUIT: DPST

CONTACT CONFIGURATION



NOTES:

1. ALL DIMENSIONS IN MM [INCH]
2. GENERAL TOLERANCE: X.XX=±0.4
X.XX=±0.25
3. TERM. NOS. FOR REFERENCE ONLY.
4. RATING: 5A@250V AC / 8A@125V AC
5. MECHANICAL LIFETIME: >2 MILLION OPERATIONS
6. TRAVEL: 3.0MM
7. CONTACT MATERIAL: COPPER ALLOY W/SILVER PLATING
8. LAMP VOLTAGE: 28V AC OR DC/ 40ma

| REV. | ECN No. | DESCRIPTION | DATE | CHKD |
|------|---------|-----------------------------|----------|------|
| C | 15556 | CHANGES TO NOTE 8, TITLE | 11/21/05 | PH |
| B | 15271 | CHANGES TO NOTE 8 AND TITLE | 9/13/05 | PH |
| A | 13463 | RELEASED FOR PRODUCTION | 9/18/03 | AR |

| TITLE | | SCALE | DATE | DR | DWG | REV |
|------------------|--|-------|---------|----|---------|-----|
| D16 DA T12 C YEL | | 1.5:1 | 9/18/03 | AR | XF0266P | C |

E-SWITCH®

THE INFORMATION CONTAINED IN THIS DOCUMENT IS PROPRIETARY TO E-SWITCH AND IS NOT TO BE COPIED OR TRANSMITTED