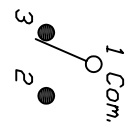


RECOMMENDED P.C.B. LAYOUT  
NOT TO SCALE

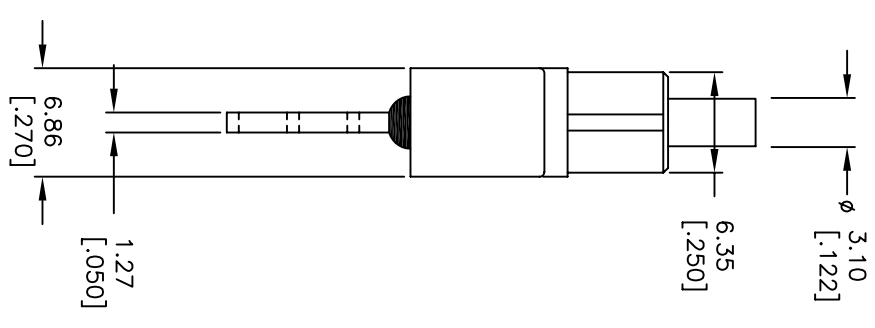
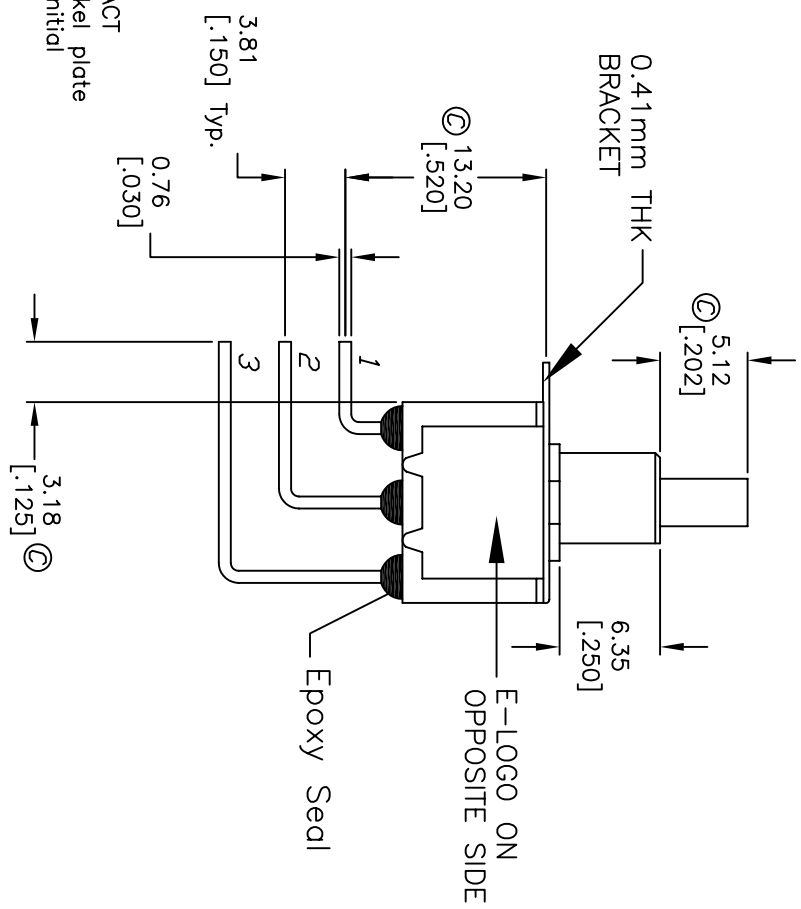
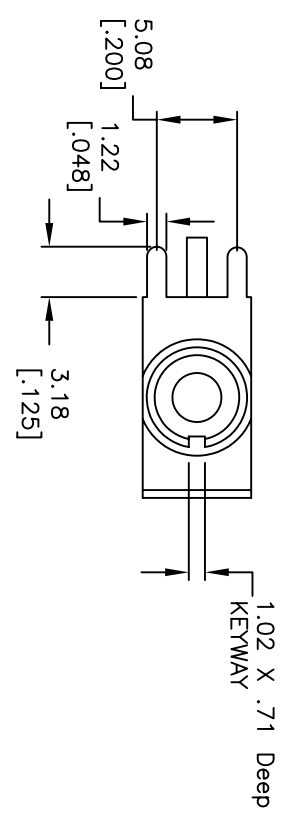


CIRCUIT: SPDT

SWITCH FUNCTION	
DN	<DN>
1-3	1-2

( ) = MOMENTARY

- NOTES:
- ALL DIMENSIONS IN MM [INCH]
  - GENERAL TOLERANCE: X.XX=±0.4  
X.XXX=±0.25
  - TERM. NOS. FOR REF. ONLY
  - RATING: 1A @250VAC;  
3A @120VAC
  - MATERIAL: FIXED TERMINAL & MOVING CONTACT  
Copper Alloy w/Silver plate over Nickel plate
  - CONTACT RESISTANCE: 10mILLI Ohms max initial  
@2-4VDC, 100mA for AG & AU
  - ELECTRICAL LIFE: 50,000 make-and-break  
cycles at full load.
  - INSULATION RESISTANCE: 1,000M ohm min.
  - DIELECTRIC STRENGTH: 1000V RMS @sea level
  - OPERATING TEMP.: -30°C to 85°C
  - 2002/95/EC (ROHS) COMPLIANT



**E-SWITCH®**

REV.	ECN NO.	DESCRIPTION	DATE	CHKD
C	15426	CHANGES NOTED WITH (C)	10/21/05	PH
B	12365	REVISED AND REDRAWN	--	--

SCALE	DATE	DR	DWG	REV
2:1	7/24/96	MM	T711005	C

700 SP-7 B20 M7 QE

THE INFORMATION CONTAINED IN THIS DOCUMENT IS PROPRIETARY TO E-SWITCH AND IS NOT TO BE COPIED OR TRANSFERRED