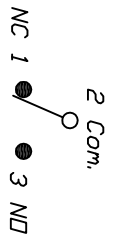


RECOMMENDED PCB LAYOUT

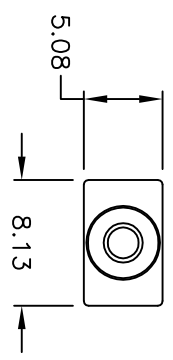
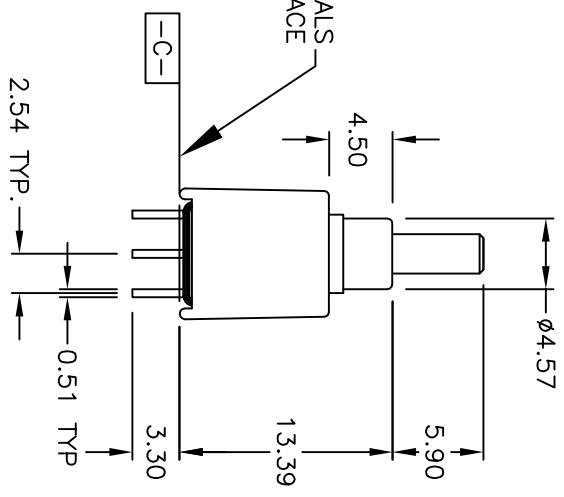
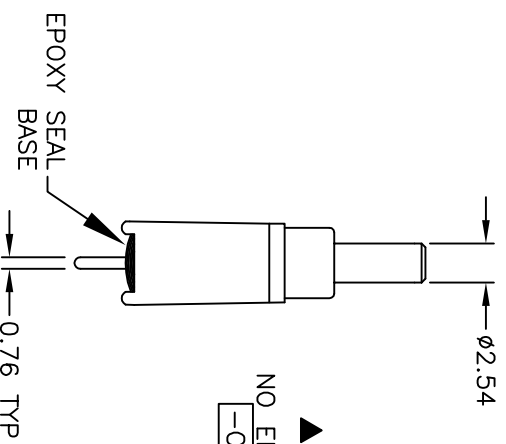


CIRCUIT: SPDT
CONTACT CONFIGURATION

DN	(DN)
2-1	2-3

() = Momentary

- NOTES:
1. ALL DIMENSIONS IN MM
 2. GENERAL TOLERANCE: X.X=±0.4
X.XX=±0.25
 3. TERM. NOS. FOR REF. ONLY
 4. RATING: 1A @120VAC or 28VDC
 5. FIXED TERM. MOVING CONTACT:
Copper Alloy w/ Silver plate.
 6. ELECTRICAL LIFE: 50,000 make-and-break cycle
at full load.
 7. DIELECTRIC STRENGTH: 1,000 V RMS @sea level.
 8. OPERATING TEMP.: -30°C to 85°C
 9. ▲ DESIGNATE MAJOR FEATURE
 10. 2002/95/EC (ROHS) COMPLIANT



B	17674	CHANGED ACTUATOR DIM. TO 5.90	9/13/07	BF
A	12308	RELEASED FOR PRODUCTION	7/17/00	CB
REV.	ECN No.	DESCRIPTION	DATE	CHKD
THE INFORMATION CONTAINED IN THIS DOCUMENT IS PROPRIETARY TO E-SWITCH AND IS NOT TO BE COPIED OR TRANSFERRED				

TITLE		SCALE		DATE		DR		DWG		REV	
E-SWITCH®		2:1		9/13/07		BF		T834004		B	
8004 WSP8M2QE											