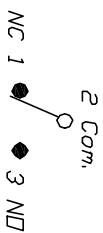


RECOMMENDED PCB LAYOUT



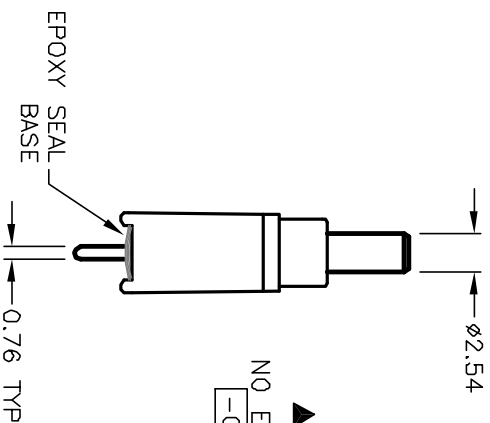
CIRCUIT: SPDT

CONTACT CONFIGURATION

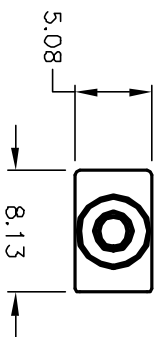
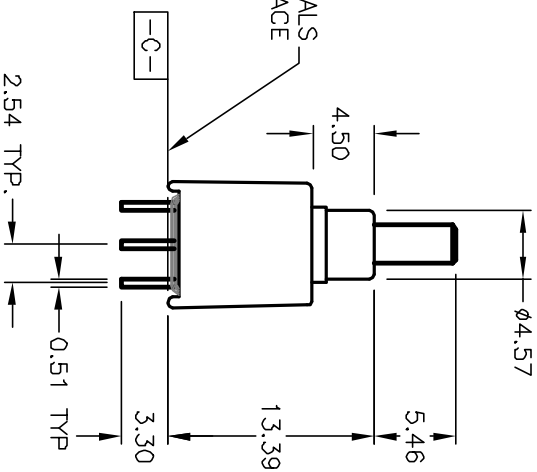
DN	(DN)
2-1	2-3

() = Momentary

- NOTES:
1. ALL DIMENSIONS IN MM
 2. GENERAL TOLERANCE: X.X=±0.4
X.XX=±0.25
 3. TERM. NOS. FOR REF. ONLY
 4. RATING: 0.4(VA) @20V AC or DC
 5. FIXED TERM. MOVING CONTACT:
Copper Alloy w/ Gold plate over
Nickel plate.
 6. ELECTRICAL LIFE: 50,000 make-and-break cycle
at full load.
 7. DIELECTRIC STRENGTH: 1,000 V RMS @sea level.
 8. OPERATING TEMP.: -30°C to 85°C
 9. ▲ DESIGNATE MAJOR FEATURE



▲ NO EPOXY ON TERMINALS
-C- BELOW SURFACE



REV.	ECN NO.	DESCRIPTION	DATE	CHKD
A	12308	RELEASED FOR PRODUCTION	7/17/00	CB
THE INFORMATION CONTAINED IN THIS DOCUMENT IS PROPRIETARY TO E-SWITCH AND IS NOT TO BE COPIED OR TRANSMITTED				

TITLE		SCALE		DATE	DR	DWG	REV
800A WSP-8 M2 R E (GOLD CONTACTS)		2:1		--	--	T834001	A
E-SWITCH®							