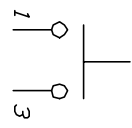
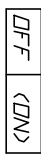


RECOMMENDED P.C.B. LAYOUT

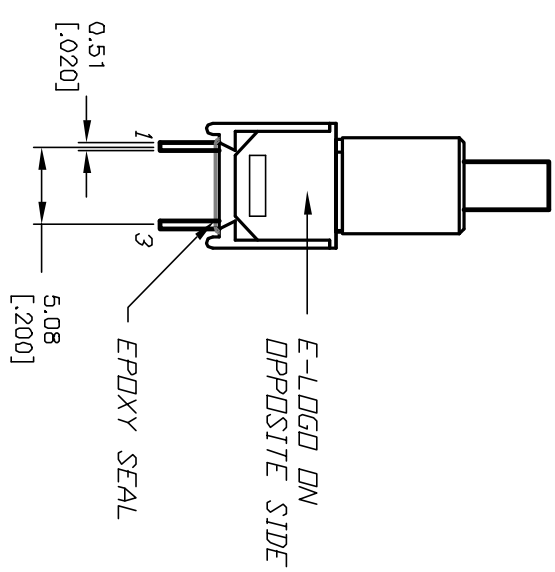
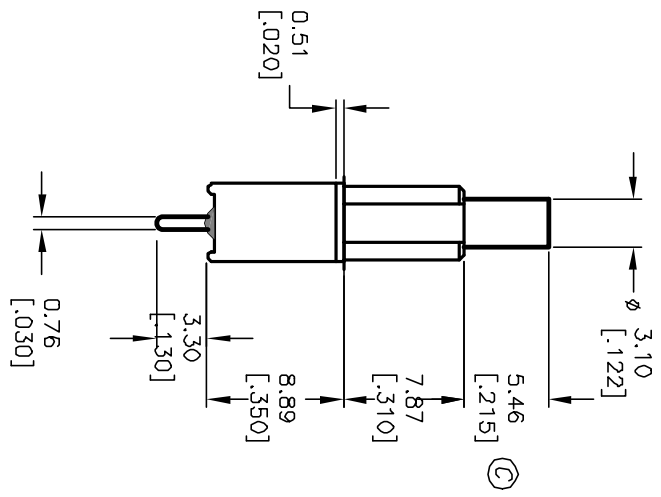
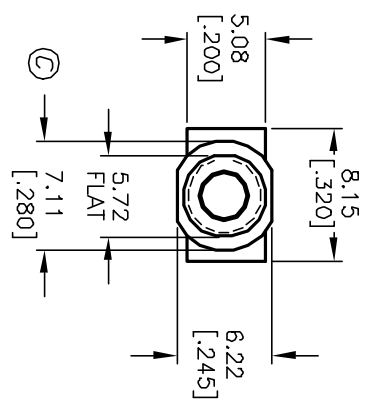


CONTACT CONFIGURATION



NOTES: < > =Momentary

1. ALL DIMENSIONS IN MM [INCH]
2. GENERAL TOLERANCE: X.X=±0.4 X.XX=±0.25
3. TERM. NOS. FOR REF. ONLY
4. RATING: 3A @120V or 28VDC; 1A @250VAC
5. FIXED TERM. & MOVING CONTACT: Copper Alloy w/SILVER plate.
6. CONTACT RESISTANCE: 20mILLI-ohms initial @2-4VDC.
7. ELECTRICAL LIFE: 60,000 make-and-break cycles at full load.
8. INSULATION RESISTANCE: 1,000M ohm min.
9. DIELECTRIC STRENGTH: 1000V RMS @sea level
10. OPERATING TEMP.: -30°C to 85°C



REV.	ECN No.	DESCRIPTION	DATE	CHKD
C	12496	REVISED AND REDRAWN	10/17/02	CJB

TITLE	SCALE	DATE	DR	DWG	REV
800 SP-9 B8 M2 Q E	2:1	3/5/97	MM	T811030	C

E-SWITCH®

THE INFORMATION CONTAINED IN THIS DOCUMENT IS PROPRIETARY TO E-SWITCH AND IS NOT TO BE COPIED OR TRANSFERRED