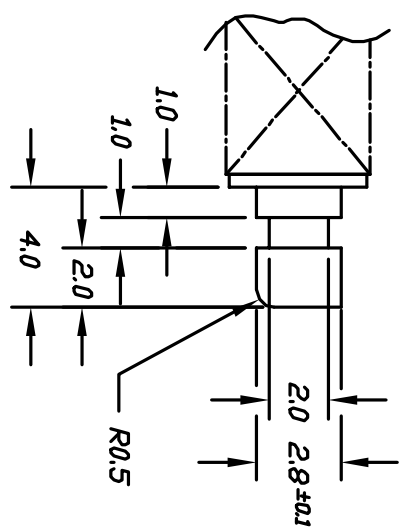
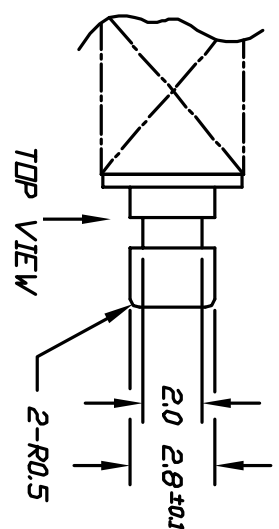


**CIRCUIT: SPDT**

**CONTACT CONFIGURATION**

- NOTES:
1. ALL DIMENSIONS IN MM
  2. GENERAL TOLERANCE: X.X=±0.4  
X.XX=±0.25
  3. TERM. NOS. FOR REF. ONLY
  4. RATING: DC 30V, 0.3A
  5. CONTACT MATERIAL:  
PHOSPHOR BRONZE W/ SILVER PLATING
  6. CONTACT RESISTANCE: 20 milli-Ohms max.
  7. DIELECTRIC STRENGTH: 1,000V rms @ Sea Level
  8. OPERATING FORCE: 230±100gf
  9. TRAVEL : FULL 3.5mm



(ACTUATOR DETAIL) SCALE 4:1

REV.	ECN No.	DESCRIPTION	DATE	CHKD
A	12310	RELEASED FOR PRODUCTION	7/19/02	CB

THE INFORMATION CONTAINED IN THIS DOCUMENT IS PROPRIETARY TO E-SWITCH AND IS NOT TO BE COPIED OR TRANSMITTED

TITLE		SCALE		DATE	DR	DWG	REV
LC 1258DA SP (Momentary)		2:1		1/18/00	MM	P070227	A

