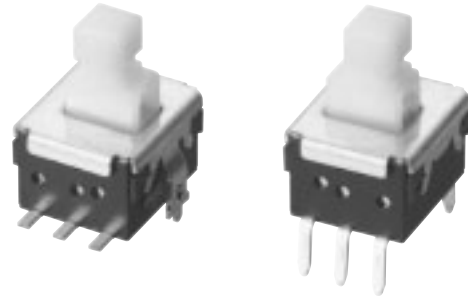


ESB33 Vertical Push Switches

Type: **ESB33 (H=6.0 mm)**

■ Features

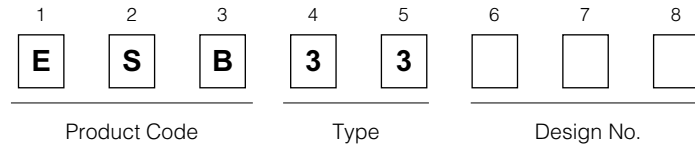
- Low profile (H=6.0 mm)
- 3 N and 5 N operating force availables
- A wide range of acceptable currents from microcomputer controls to relay control signals



■ Recommended Applications

- Operation switches for automobiles (heater control switches etc.)
- Secondary power switches for lower voltage in consumer electronic equipment and different types of mode switches

■ Explanation of Part Numbers



■ Specifications

Rating	50 μ A 3 Vdc to 0.2 A 14 Vdc (Resistive load)
Travel	Lock travel=1.5 mm Full travel=2.3 mm
Mounting Height	6.0 mm
Poles and Throws	2-poles 2-throws
Operating Mode	Self-lock, Non-lock
Switching Mode	Non-shorting
Minimum Quantity/Packing Unit	100 pcs. Polyethylene Bag (Bulk) / 300 pcs. Embossed Taping (Reel Pack)
Quantity/Carton	2000 pcs. Polyethylene Bag (Bulk) / 1800 pcs. Embossed Taping (Reel Pack)

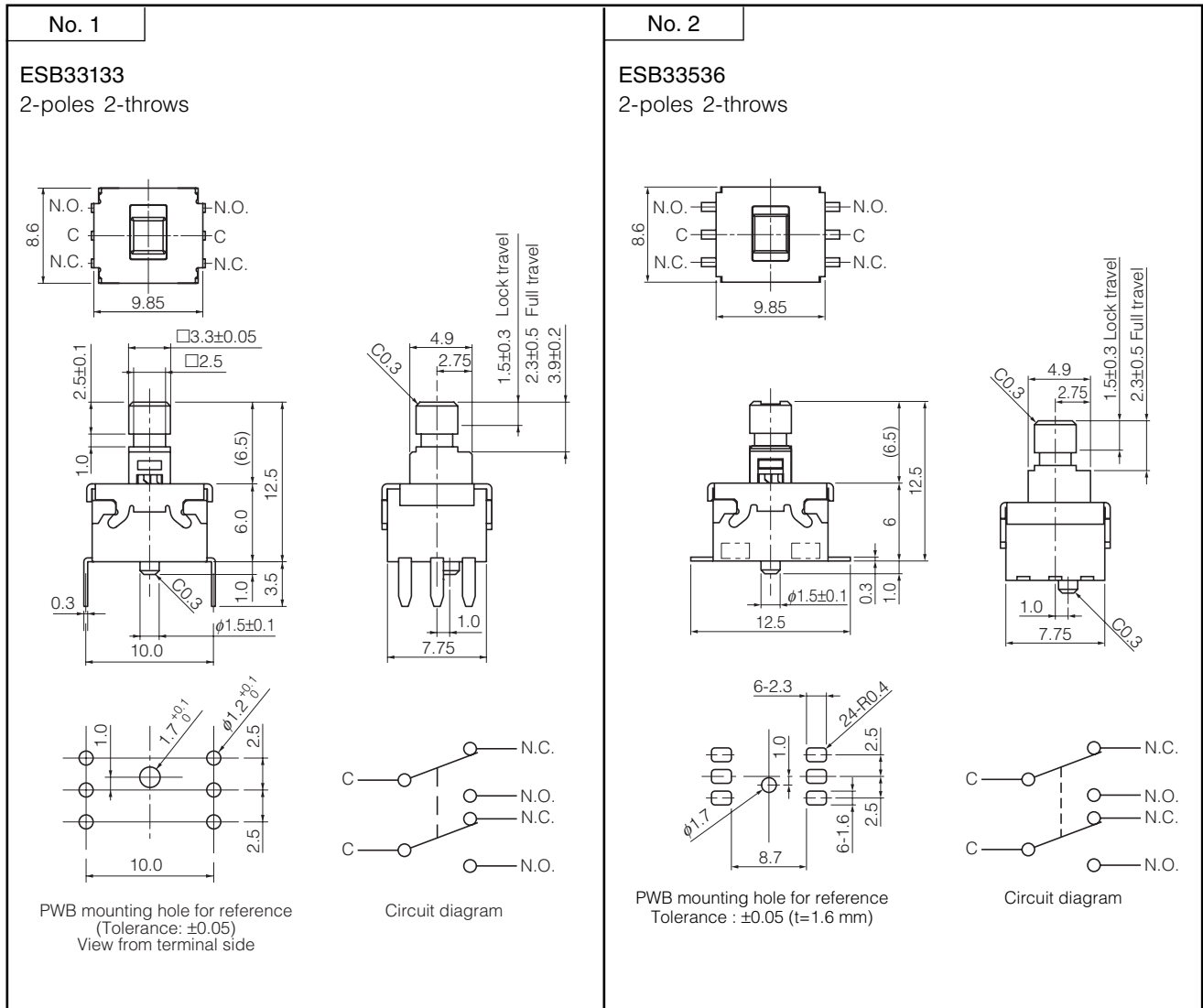
■ Standard Products

Operating Mode	Terminals	Packaging	Operating Force	Part Numbers	Lever Color
PP	Wave Soldering	Polyethylene Bag (Bulk)	3.0 N \pm 1.0 N	ESB33133	Light Yellow
NL				ESB33134	
PP			5.0 N \pm 1.5 N	ESB33153	Black
NL				ESB33154	
PP	Surface Mount	Embossed Taping (Reel)	3.0 N \pm 1.0 N	ESB33535	Light Yellow
NL				ESB33536	

Note: PP=Self-lock NL=Non-lock

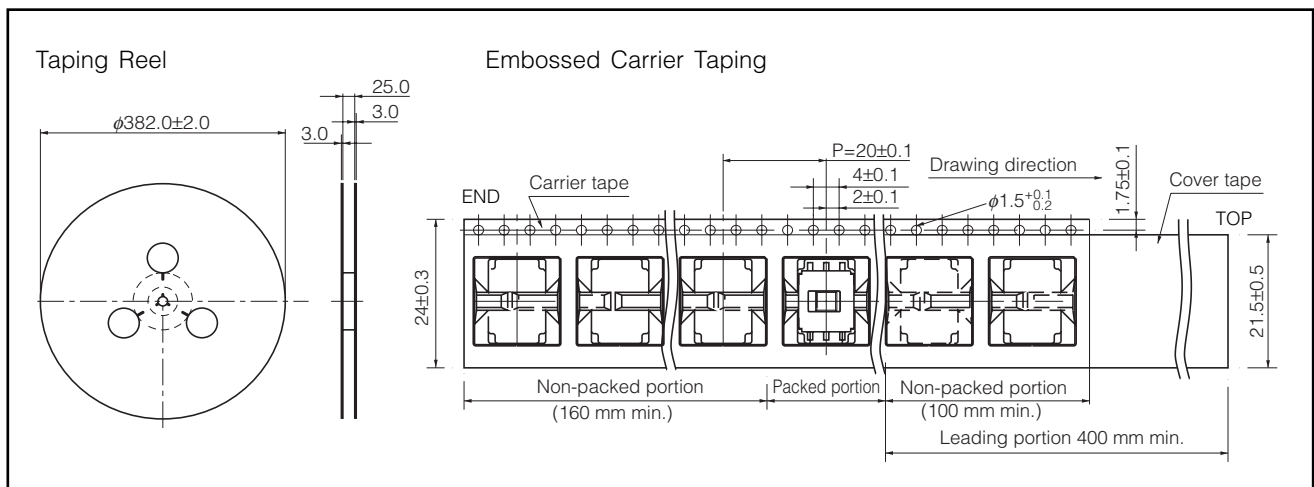
Design and specifications are each subject to change without notice. Ask factory for the current technical specifications before purchase and/or use. Should a safety concern arise regarding this product, please be sure to contact us immediately.

■ Dimensions in mm (not to scale)



■ Packaging Specifications

Standard Reel Dimensions in mm (not to scale)



■ Application Notes:

- Operating force should be applied at the center of the lever.