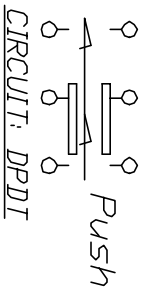
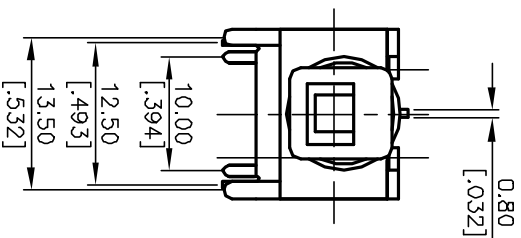
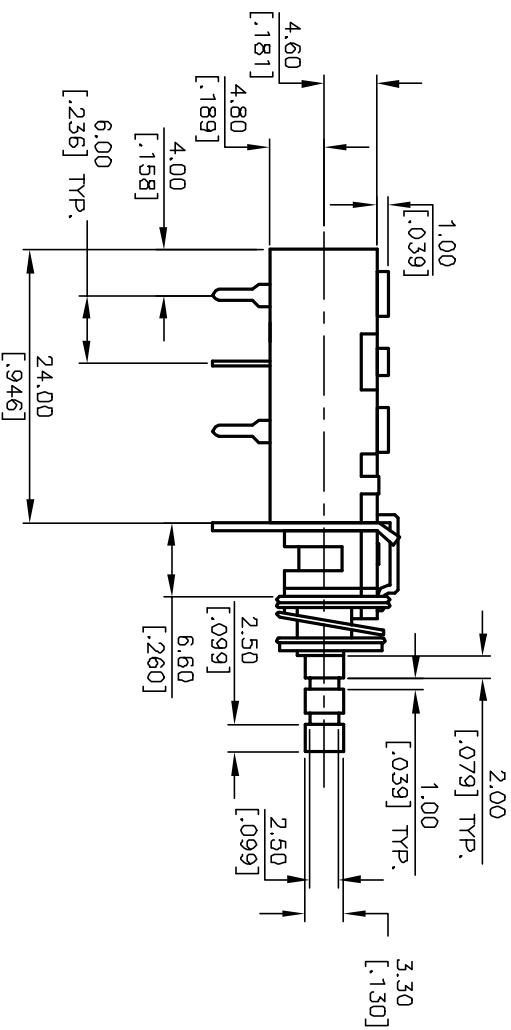


RECOMMEND P.C.B. HOLES



CONTACT CONFIGURATION

NOTES:

1. ALL DIMENSIONS IN MM[INCH]
2. GENERAL TOLERANCE: X.X=±0.4  
X.XX=±0.25
3. TERM. NOS. FOR REF. ONLY
4. RATING: AC 125V 7A, UL,CUL,VDE APPROVED  
AC 250V 4A, UL,CUL,VDE APPROVED
5. CONTACT MATERIAL: COPPER ALLOY WITH SILVER PLATE.
6. CONTACT RESISTANCE: 20m ohm max. at 5V DC 1A.
7. DIELECTRIC STRENGTH: AC 1500V RMS
8. LIFE EXPECTANCY: Electrical: 6,000 cycle
9. OPERATING FORCE: 550±150gf
10. TRAVEL: Full: 5.5mm, Lock: 4.0mm
11. TERMINALS TO BE EPOXY
12. ▲ DENOTES CRITICAL PARAMETER.

REV.	ECN No.	DESCRIPTION	DATE	CHKD
A	13185	RELEASED FOR PRODUCTION	6/5/03	AR

TITLE				
P227EE2CXC				
SCALE	DATE	DR	DWG	REV
1.5:1	6/5/03	AR	P030126	A

**E-SWITCH**®

THE INFORMATION CONTAINED IN THIS DOCUMENT IS PROPRIETARY TO E-SWITCH AND IS NOT TO BE COPIED OR TRANSFERRED