

## ESB32 Middle Current Push Switches

Type: **ESB32(H=12.8 mm)**

### ■ Features

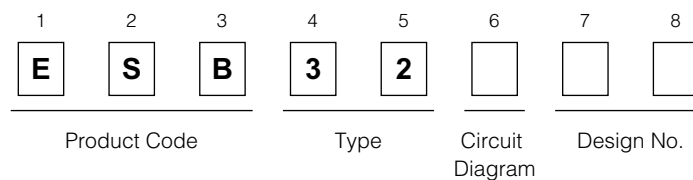
- Long travel
- Can be fitted to a printed circuit board.



### ■ Recommended Applications

- Operation switches for automobiles (overdrive, hazard and map lamp switches etc.)
- Used for detecting function in relay and solenoid controls

### ■ Explanation of Part Numbers



- 1: Lever height=25.0 mm, N.O.
- 2: Lever height=25.0 mm, N.C.
- 3: Lever height=23.0 mm, N.O.
- 4: Lever height=23.0 mm, N.C.

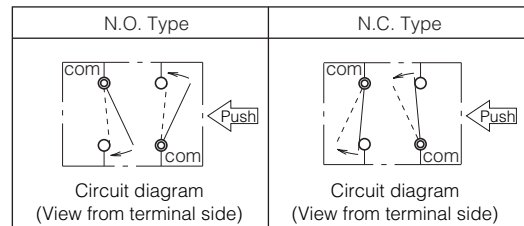
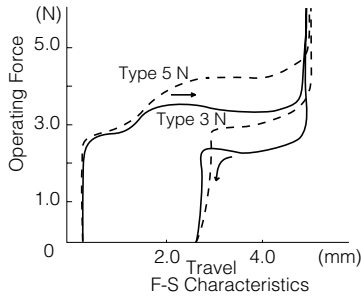
### ■ Specifications

Rating	0.1 A 12 Vdc to 3 A 12 Vdc (Resistive load)
Travel	Lock Travel: 2.45 mm, Full Travel: 4.5 mm Lock Travel: 2.8 mm, Full Travel: 4.5 mm
Mounting Height	12.8 mm
Poles and Throws	2-poles 1-throw (N.O. type or N.C. type)
Operating Mode	Self-lock, Non-lock
Operating Force	5.0 N±3.0 N, 3.5 N±1.5 N
Minimum Quantity/Packing Unit	50 pcs. Polyethylene Bag (Bulk)
Quantity/Carton	1000 pcs.

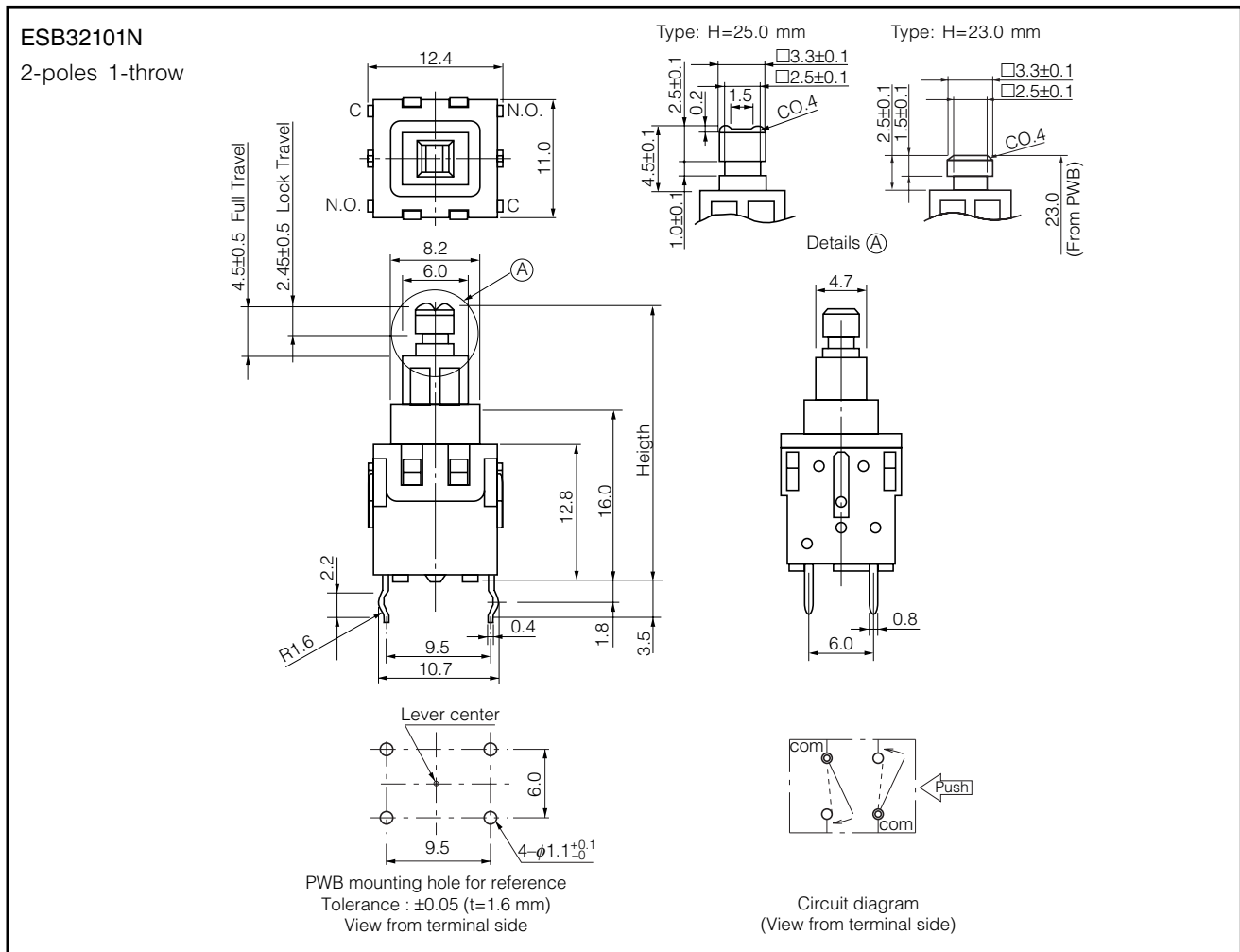
## Standard Products

Lever Height	Circuit Diagram	Operating Force	Formed Terminals		Straight Terminals	
			PP	NL	PP	NL
25.0 mm	N.O.	3.5 N	ESB32101N	ESB32132	ESB32133	ESB32134
		5.0 N	ESB32151	ESB32152	ESB32153	ESB32154
	N.C.	3.5 N	ESB32231	ESB32232	ESB32233	ESB32234
		5.0 N	ESB32251	ESB32252	ESB32253	ESB32254
23.0 mm	N.O.	3.5 N	ESB32331	ESB32332	ESB32333	ESB32334
		5.0 N	ESB32351	ESB32352	ESB32357	ESB32354
	N.C.	3.5 N	ESB32431	ESB32432	ESB32433	ESB32434
		5.0 N	ESB32451	ESB32452	ESB32453	ESB32454

Note: PP=Self-lock, NL=Non-lock



## Dimensions in mm (not to scale)



## Application Notes:

- Operating force should be applied at the center of the lever.

Design and specifications are each subject to change without notice. Ask factory for the current technical specifications before purchase and/or use. Should a safety concern arise regarding this product, please be sure to contact us immediately.