

## GENERAL SPECIFICATIONS FOR SB25, SB60s, SB221s, SB265

### Electrical Capacity (Resistive Load)

Power Level: Shown in the following tables

### Other Ratings

<b>Contact Resistance:</b>	10 milliohms maximum
<b>Insulation Resistance:</b>	200 megohms minimum @ 500V DC for SB221s, SB25, & SB265; 1,000 megohms minimum @ 500V DC for SB60s.
<b>Dielectric Strength:</b>	1,500V AC minimum for SB265 & SB25 for 1 minute minimum; 2,000V AC minimum between contacts for SB221s & SB60s for 1 minute minimum; 1,500V AC minimum between contacts & case for SB221s & SB60s for 1 minute minimum
<b>Mechanical Life:</b>	50,000 operations minimum for SB221s; 30,000 operations minimum for SB25, SB60s, SB265
<b>Electrical Life:</b>	10,000 operations minimum
<b>Total Travel:</b>	SB221s .116" (2.95mm); SB60s .094" (2.4mm); SB265 .213" (5.4mm); SB25 .195" (4.95mm)
<b>Operating Temp Range:</b>	-10°C through +70°C (+14°F through +158°F)

### Materials & Finishes

<b>Cap:</b>	Polybutylene terephthalate (PBT) (AT414)	<b>Plunger:</b>	Polyacetal or brass with nickel plating
<b>Bushing:</b>	Brass with nickel plating		
<b>Case:</b>	Phenolic resin or melamine phenolic resin	<b>Case Cover:</b>	Steel with zinc plating
<b>Movable &amp; Stationary Contacts:</b>	Copper with silver plating for SB221s; silver alloy with silver plating for SB25, SB60s, & SB265		
<b>Terminals:</b>	Copper with tin plating for SB25 & SB60s; copper with silver plating for SB265		

### Installation

**Soldering Time & Temp:** Manual Soldering (Solder Lug): See Profile A in Supplement section.

### Standards & Certifications



UL & C-UL Recognized:

CSA Certified:

Designated with UL & C-UL recognized symbols beside part numbers on following pages. See Supplement Index page Z2 to find rating details. UL File No. WOYR2.E44145; C-UL File No. WOYR80.E44145. Add "/U" or "C-UL" to end of part number to order UL or C-UL marks on switch. Designated with CSA certified symbol beside part numbers on following pages. See Supplement section to find rating details. CSA File No. 023535-0-000 Add "/C" to end of part number to order CSA mark on switch.

## SINGLE POLE WITH SOLDER LUG OR SCREW LUG

Model	Approvals	Pole & Throw	Pushbutton Position/Connected Terminals ( ) = Momentary		Electrical Capacity (Resistive)	
			Normal	Down	AC 125V	AC 250V
SB221NO	— —	SPST	OFF —	(ON) 1-4	3A	1.5A
SB221NC		SPST	ON 1-4	(OFF) —	3A	1.5A
*SB221TNO	— —	SPST	OFF —	(ON) 1-4	3A	1.5A
*SB221TNC		SPST	ON 1-4	(OFF) —	3A	1.5A

\* Suffix T = Screw Lug

**Throw & Schematic:**

SPST SB221NO

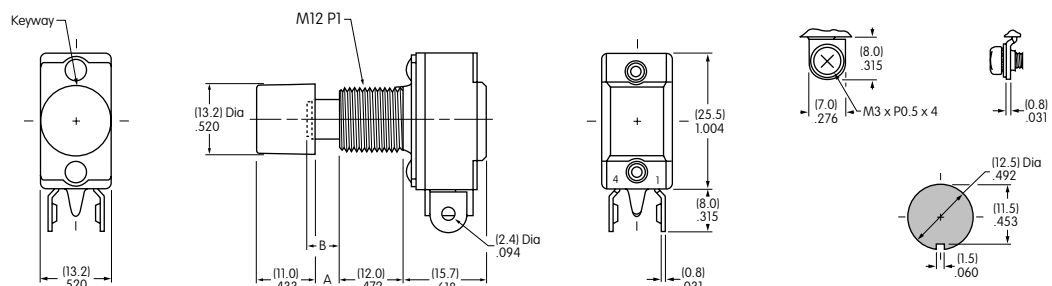
SPST SB221NC

Note: Terminal numbers are actually on the switch.

- Standard Hardware: AT504M Knurled Nut, AT508 Lockwasher, AT527M Hex Backup Nut. See Accessories & Hardware section for details.



**SB221NO**  
Supplied with  
AT414 Black Cap



Dimension A: .185" (4.7mm) for NO model & .150" (3.8mm) for NC model.  
Dimension B Plunger Extension: .197" (5.0mm) for NO model & .161" (4.1mm) for NC model.

Panel Thickness  
.193" (4.9mm)

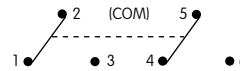
### DOUBLE POLE WITH SOLDER LUG

Model	Approvals	Pole & Throw	Pushbutton Position/Connected Terminals ( ) = Momentary				Electrical Capacity (Resistive)	
			Normal	Keyway	Down		AC 125V	AC 250V
SB61A	UL	DPDT	ON	2-3 5-6	(ON)	2-1 5-4	10A	5A
SB61B	—	DPDT	ON	2-3 5-6	(ON)	2-1 5-4	3A	1.5A
*SB63A	—	DPDT	ON	2-3 5-6	(ON) or Lockdown ON	2-1 5-4	10A	5A

\* Lockdown for SB63A is achieved by actuating and then turning the button clockwise.

Throw & Schematic:

DPDT

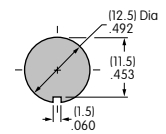
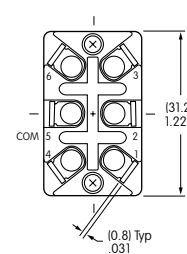
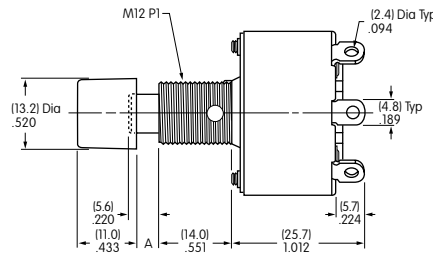
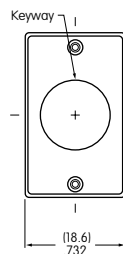


Note: Terminal numbers are actually on the switch.

- Standard Hardware: AT504M Knurled Nut, AT508 Lockwasher, AT527M Hex Backup Nut. See Accessories & Hardware section for details.



**SB61A**  
Supplied with  
AT414 Black Cap



Panel Thickness  
.193" (4.9mm)

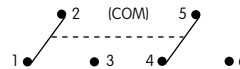
Dimension A: .169" (4.3mm) for SB61 model and .130" (3.3mm) for SB63 model.

### DOUBLE POLE WITH SOLDER LUG

Model	Approvals	Pole & Throw	Pushbutton Position/Connected Terminals ( ) = Momentary				Electrical Capacity (Resistive)	
			Normal	Keyway	Down		AC 125V	AC 250V
SB25	UL	DPDT	ON	2-3 5-6	ON	2-1 5-4	15A	9A

Throw & Schematic:

DPDT

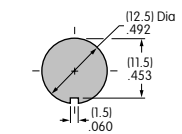
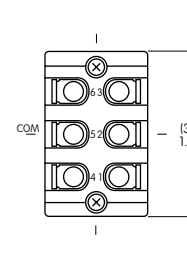
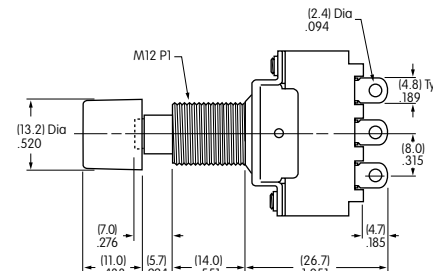
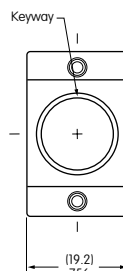


Note: Terminal numbers are actually on the switch.

- Standard Hardware: AT504M Knurled Nut, AT508 Lockwasher, AT527M Hex Backup Nut. See Accessories & Hardware section for details.








**SB25**  
Supplied with  
AT414 Black Cap



Panel Thickness  
.193" (4.9mm)

### SINGLE POLE WITH SOLDER LUG

Model	Approvals	Pole & Throw	Pushbutton Position/Connected Terminals ( ) = Momentary		Electrical Capacity (Resistive)	
			Normal  Keyway	Down 	AC 125V	AC 250V
SB265	  	SPST	ON 1-4	OFF —	6A	3A

Throw & Schematic:

SPST



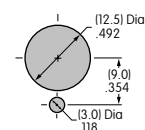
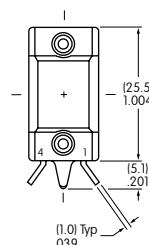
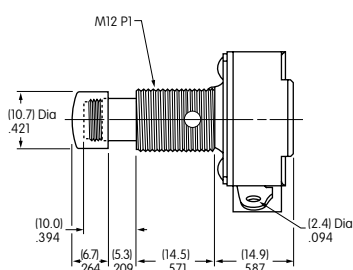
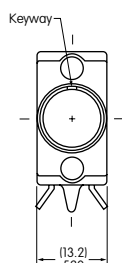
Note: Terminal numbers are actually on the switch.

- Standard Hardware: AT504M Knurled Nut, AT508 Lockwasher, AT527M Hex Backup Nut. See Accessories & Hardware section for details.



**SB265**

Supplied with Chrome Plated Brass Cap



Panel Thickness  
.291" (7.4mm)