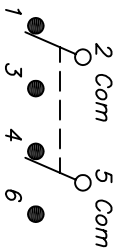


RECOMMENDED P.C.B. LAYOUT

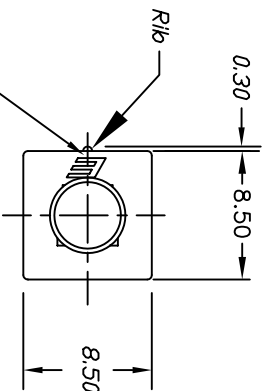


CIRCUIT: 2PDT

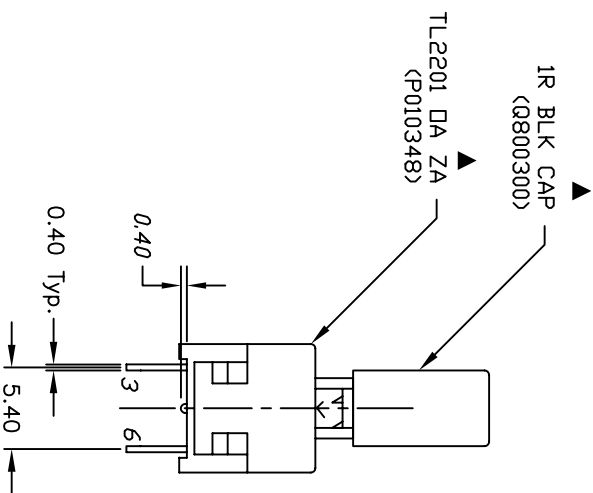
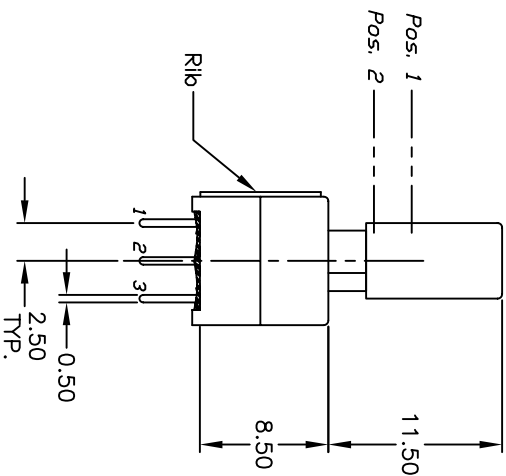
CONNECTED TERM. #	FUNCTION	POS. 1	POS. 2
2-1,5-4	NORMALLY CLOSED		
2-3,5-6	NORMALLY OPEN		
2,5	COMMON		

NOTES:

1. ALL DIMENSIONS IN MM
2. GENERAL TOLERANCE: X.X=±0.4
X.XX=±0.25
3. TERM. NOS. FOR REF. ONLY
4. RATING: 0.1A @30V DC
5. TRAVEL: (TO MAKE)= 1.34±0.38
(TOTAL TRAVEL)= 2.50±0.38
(TO LATCH)= 1.50±0.38
6. OPERATING FORCE:180±50gf
7. CONTACT RESISTANCE: 50mILLI—Ohms MAX. Initially
8. ELECTRICAL LIFE (at Full Load):
10,000 Cycles Make & Break
9. 2002/95/EC (ROHS) COMPLIANT
10. ▲ DENOTES CRITICAL PARAMETER.



▲ Logo & Rib Location To Be As Shown



REV.	ECN No.	DESCRIPTION	DATE	CHKD	PH
B	15338	NEW SUPPLIER CAP, ROHS NOTE	9/27/05		PH
A	14127	RELEASED FOR PRODUCTION	7/1/04		AR

THE INFORMATION CONTAINED IN THIS DOCUMENT IS PROPRIETARY TO E-SWITCH AND IS NOT TO BE COPIED OR TRANSMITTED

E-SWITCH®

TITLE	TL2201DAZA1RBLK
SCALE	2:1
DATE	7/1/04
DR	AR
DWG	XP0271A
REV	B