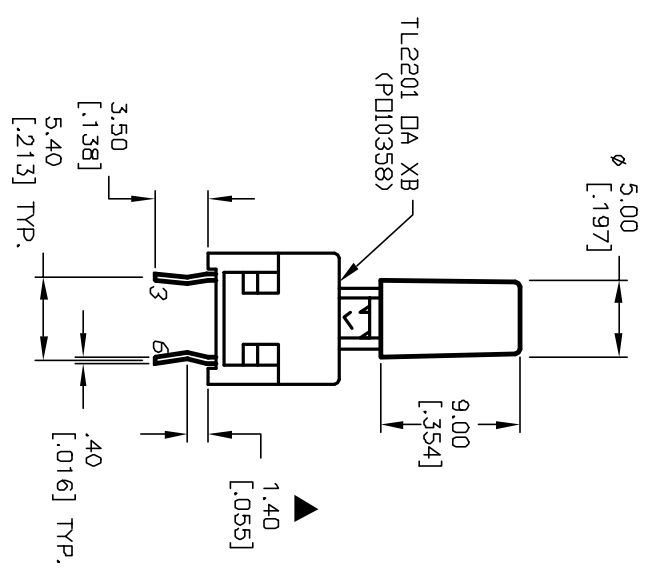
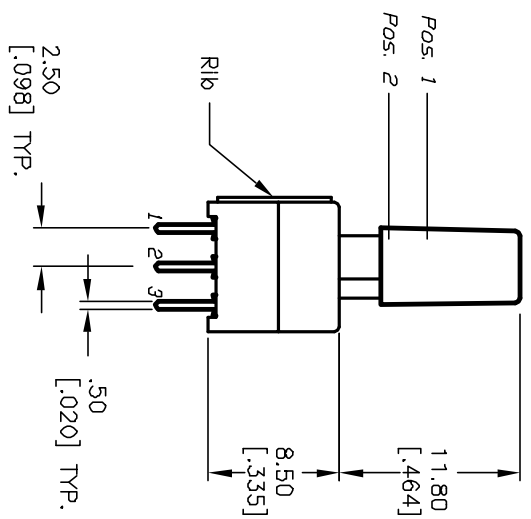
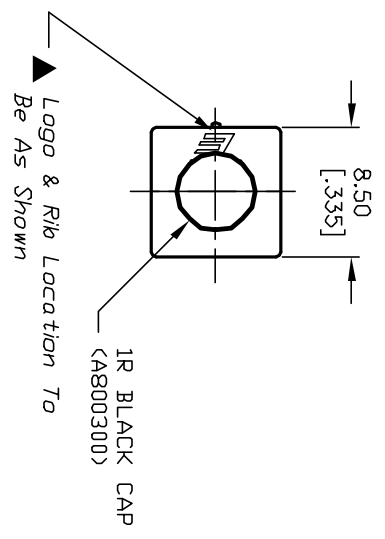


POS	SWITCH FUNCTION
POS 1	POS 2
DN	(DN)
2-1,5-4	2-3,5-6

< > = Momentary

- NOTES:
1. ALL DIMENSIONS IN MM [INCH]
 2. GENERAL TOLERANCE: X.X=±0.4 X.XX=±0.25
 3. TERM. NOS. FOR REF. ONLY
 4. RATING: 0.1A @30V DC
 5. TRAVEL: TRAVEL:=2.50±0.38 LOCK=1.34±0.38
 6. OPERATING FORCE:180±50gf
 7. CONTACT RESISTANCE: 50mΩ-Ohms MAX. Initially
 8. ELECTRICAL LIFE (at Full Load): 10,000 Cycles Make & Break
 9. DESIGNATE MAJOR FEATURE:



REV.	ECN No.	DESCRIPTION	DATE	CHKD
A	11641	RELEASED FOR PRODUCTION	9/05/01	CB

TITLE	SCALE	DATE	DR	DWG	REV
TL2201 DA X B /IRBLK (Momentary)	2:1	9/05/01	CB	XP0172A	A



THE INFORMATION CONTAINED IN THIS DOCUMENT IS PROPRIETARY TO E-SWITCH AND IS NOT TO BE COPIED OR TRANSFERRED