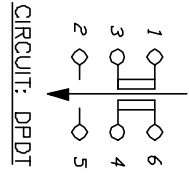


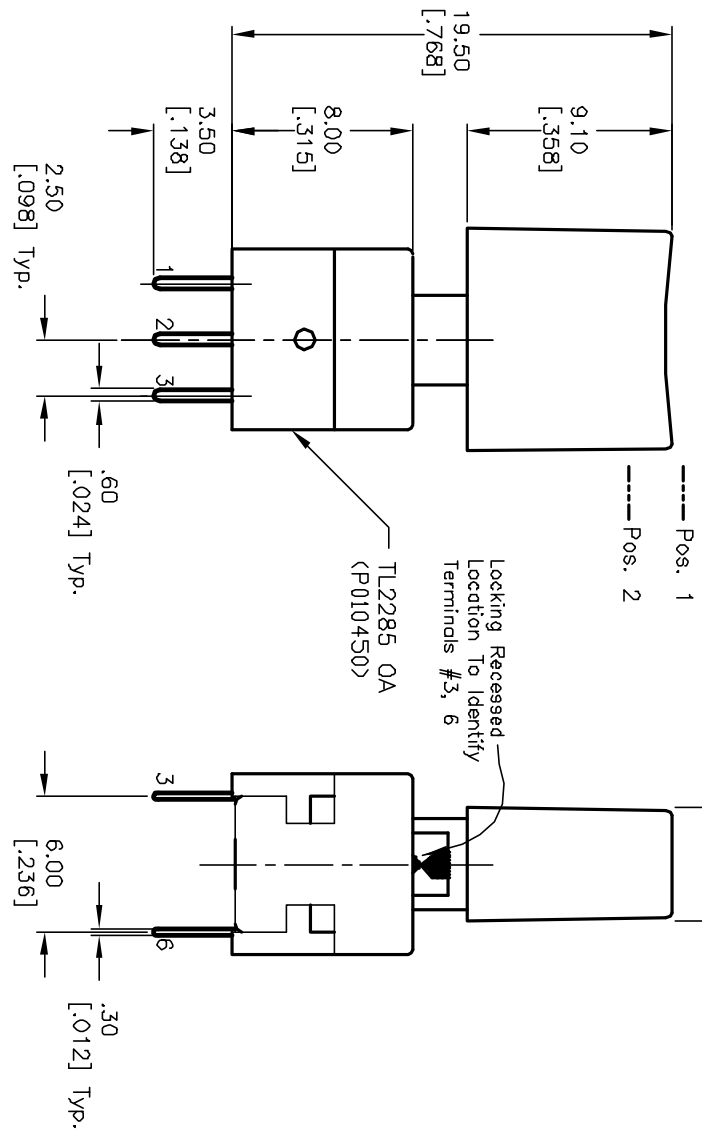
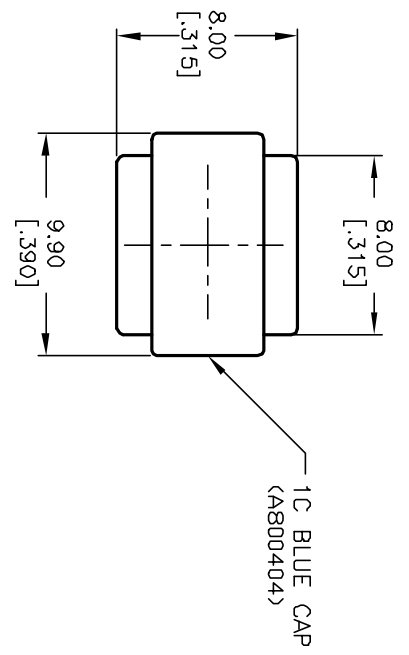
RECOMMENDED P.C.B. LAYOUT

SWITCH FUNCTION	
PDS 1	PDS 2
3-1,4-6	3-2,4-5
() =Momentary	



NOTES:

1. ALL DIMENSIONS IN MM [INCH]
2. GENERAL TOLERANCE: X.X=±0.4
X.XX=±0.25
3. TERM. NOS. FOR REF. ONLY
4. RATING: 0.1A @30V
5. CONTACT RESISTANCE: 100MILLI-OHMS max.
6. TIMING: Non-Shorting
7. TRAVEL: Full: 2.5mm, Lock: 1.5mm
8. OPERATING FORCE: 200±80gf. Typical
9. ELECTRICAL LIFE: 10,000 CYCLES MAKE & BREAK CYCLES AT FULL LOAD.
10. ▲ DESIGNATE MAJOR:



A	11782	RELEASED FOR PRODUCTION	10/23/01	CB
REV.	ECN No.	DESCRIPTION	DATE	CHK'D

TITLE				
TL 2285 DA / 1C-BLU				
SCALE	DATE	DR	DWG	REV
3:1	10/23/01	CB	XP0230A	A

THE INFORMATION CONTAINED IN THIS DOCUMENT IS PREPARED FOR E-SWITCH AND IS NOT TO BE COPIED OR TRANSMITTED