

SPECIFICATIONS:

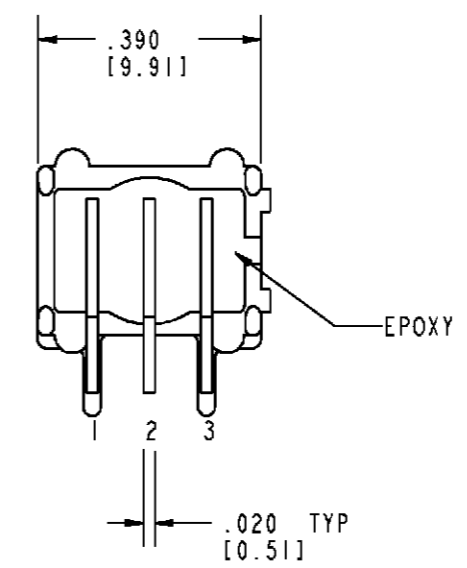
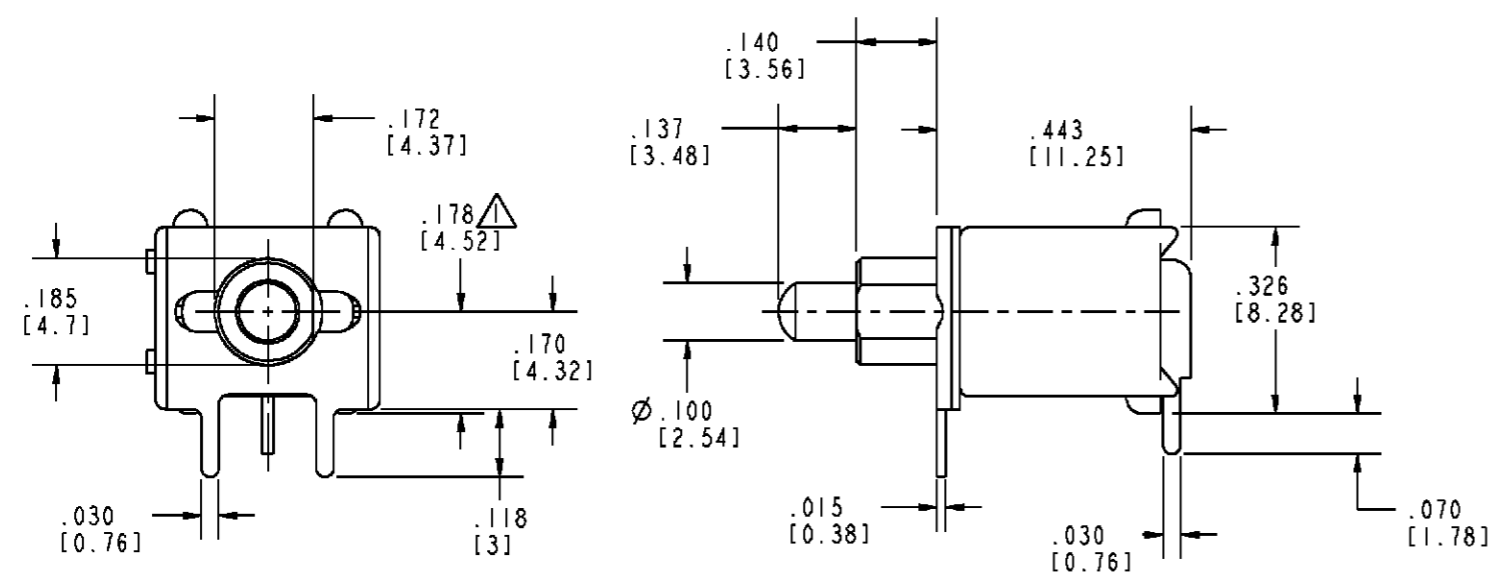
CURRENT RATING: 0.4VA MAX., 20V MAX. (AC/DC)

INITIAL CONTACT RESISTANCE: 20 MILLIOHMS MAX.
@ 100mV & 1mA

VOLTAGE WITHSTANDING: 1000VAC BETWEEN
TERMINALS & CASE GROUND FOR 1 MINUTE

NOTES:

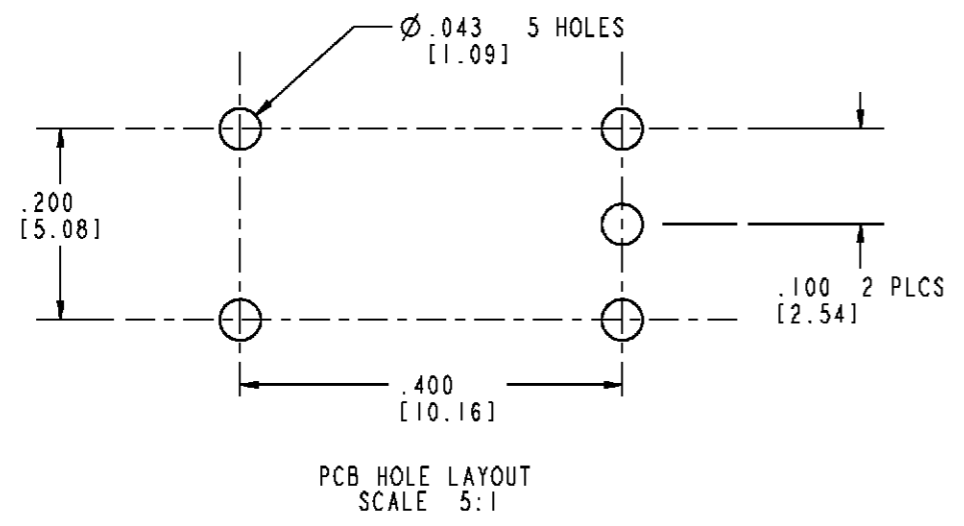
△ ACTUAL DISTANCE OF ϕ FROM PCB WHEN MOUNTED



(*) BUTTON COLORS AVAILABLE

(0) BLACK
(2) RED
(6) BLUE

NO CENTER TERMINAL ON "C" FUNCTION SWITCH		
TPB11FG-RA-ES**	2-1	2-3 (MOM.)
TPB11CGRA-ES**	OFF	3-1 (MOM.)
SWITCH MODEL	FLAT	FLAT
TERMINALS CONNECTED WITH BUTTON IN POSITION SHOWN		
NOTE: TERMINAL DESIGNATION NUMBERS ARE FOR REFERENCE ONLY AND DO NOT APPEAR ON SWITCHES		



SALES DRAWING			
Thomas & Betts		MEMPHIS, TENNESSEE	
PUSHBUTTON SWITCH (TPB11*G-RA-ES*)			
UNLESS OTHERWISE SPECIFIED, TOLERANCES ARE:		DRAWN V. J. MARTINI	DATE 12-5-80
.XX ± .-		ENGINEER R. D.	DATE 12-8-80
.XXX ± .01		THIRD ANGLE PROJECTION	CONFIDENTIAL PROPERTY OF THOMAS & BETTS, NOT TO BE DISCLOSED TO OTHERS, REPRODUCED, OR USED FOR ANY PURPOSES EXCEPT AS AUTHORIZED IN WRITING BY AN AUTHORIZED OFFICIAL OF T&B. MUST BE RETURNED TO T&B ON DEMAND, ON COMPLETION OF ORDER, OR OTHER PURPOSE FOR WHICH LENT.
.XXXX ± -		DIMENSIONS ARE IN: INCH[mm]	
ANGLES ± 1°		PROJ. NO.	SHEET 1 OF 1
		SCALE 3:1	REV 1
		SIZE B	DRAWING NO. 40049

REV	1
REV NUMBER	1001128
ENGINEER/DATE	SES/3-22-00