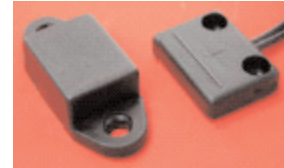


DESCRIPTION

The LY-25 series proximity sensor has been designed for screw mounting. The sensor should be used on a fired surface with actuating magnet on moving surface.



FEATURES

- No standby power drain
- Simple installation and adjustments
- UL approval

APPLICATIONS

- Door switch
- Machine tool safety
- Security system

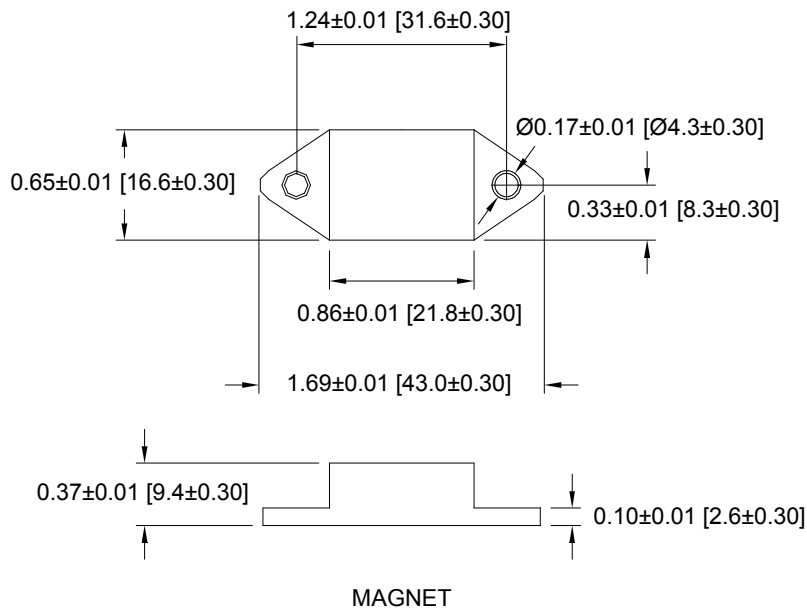
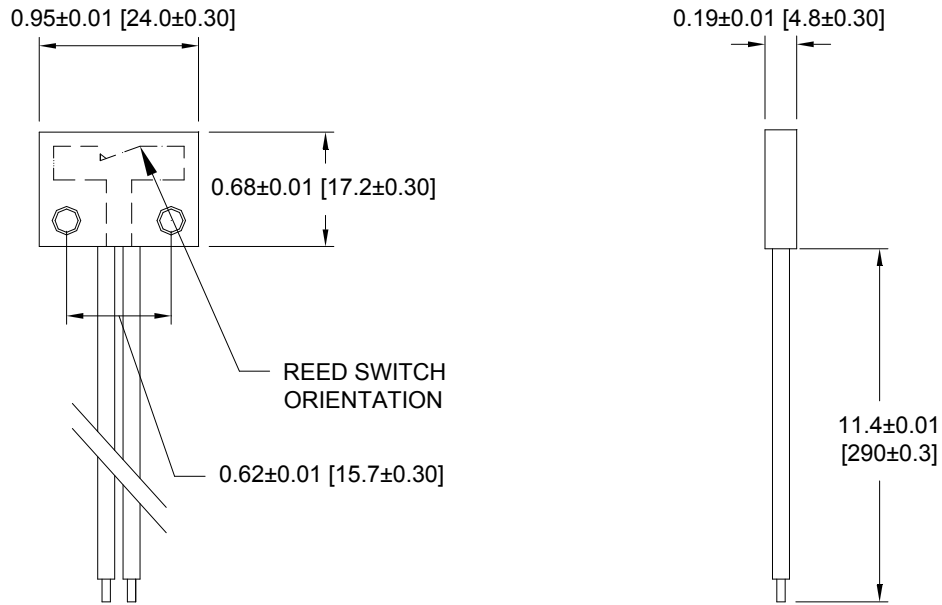
SPECIFICATIONS

Parameters	Unit	
Material		ABS
Dimensions		
Length	inches [mm]	0.29 [7.5]
Width	inches [mm]	0.49 [12.5]
Height	inches [mm]	0.69 [17.5]
Body Color		Black
Wire Length	inches [mm]	11.81 [300]
Wire Color		Black
Wire AWG	AWG	24
Specifications		
Contact Ratings		
Switching Voltage	VDC	200
Switching Current	A	0.5
Carry Current	A	1.5
Contact Rating	VA	10
Contact Resistance	Max. Ohms	0.10
Contact Material		Ru
Electrical Ratings		
Insulation Resistance	Ohms	1 x 10 ¹¹
Operate Time	ms	0.5
Release Time	ms	0.2
Contact Life	Ops	1 x 10 ⁹
Enviromental Ratings		
Operating Temperature	°C	-20 to +85
Storage Temperature	°C	-20 to +85
Vibration Resistance	Gs	20
Shock Resistance	Gs	30
Weight (sensor)	g	3.9
Wieght (magnet)	g	8.4



MECHANICAL DIMENSIONS

Dimensions in mm



USA 1.866.SRC.8668 EUROPE 44.1225.421999 FAR EAST 866.2.2698.8422

WWW.SRCDEVICES.COM

