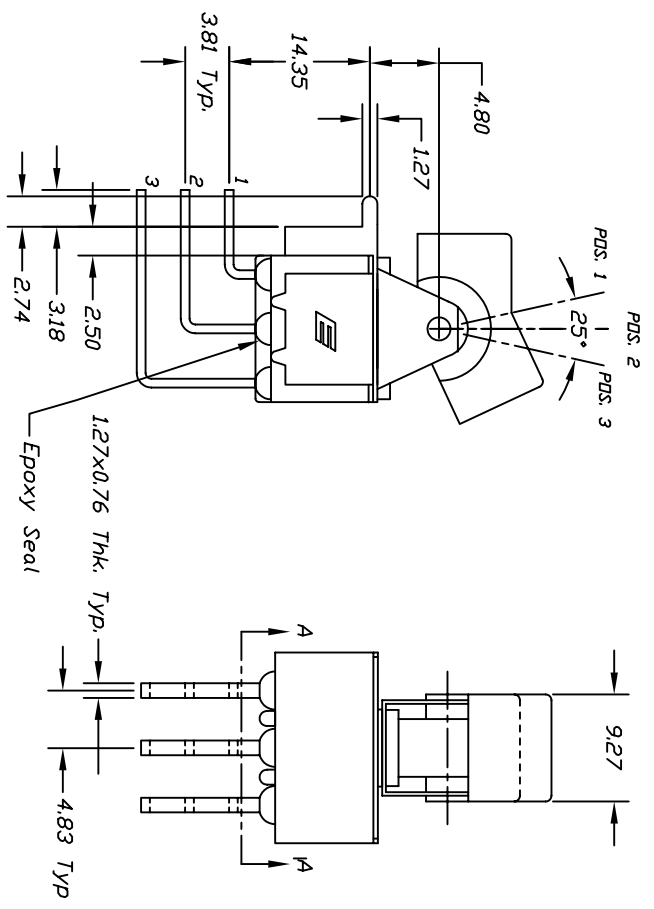
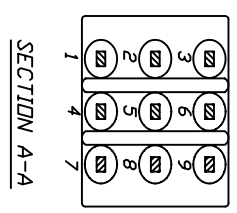
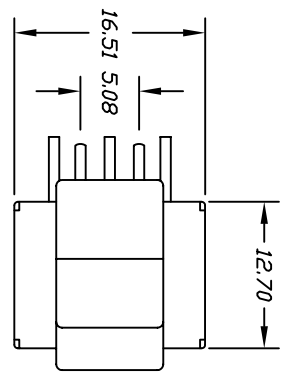


CONTACT CONFIGURATION

SWITCH FUNCTION		
POS. 1	POS. 2	POS. 3
DN	NONE	DN
2-3-5-6	OPEN	2-1,5-4
8-9		8-7

- NOTES:
1. ALL DIMENSIONS IN MM
  2. TERMINAL NUMBERS FOR REF ONLY
  3. PLATING MATERIAL, SILVER
  4. RATING: 2A @250VAC, 5A @120VAC DR 28VDC
  5. ELECTRIC LIFE: 40,000 MAKE-AND-BREAK CYCLES AT FULL LOAD
  6. INSULATION RESISTANCE: 1,000 MEGA-OHM MIN.
  7. DIELECTRIC STRENGTH: 1,000 V RMS @SEA LEVEL.
  8. OPERATING TEMP:-30°C to 85°C
  10. ▲ DENOTES CRITICAL PARAMETER.



REV.	ECN NO.	DESCRIPTION	DATE	CHKD
B	15140	REVISED/ADD NOTES 4-10	8/5/05	PV
A		RELEASED FOR PRODUCTION		

TOLERANCES		TITLE		SCALE		DATE		DR		DWG		REV	
0.0	±0.4	300 3P1 J1 M7 Q E		2:1		6/1/98		MM		T331006		B	
0.00	±0.25	<p><b>E SWITCH®</b></p>											

THE INFORMATION CONTAINED IN THIS DOCUMENT IS UNCLASSIFIED EXCEPT WHERE SHOWN OTHERWISE AND IS NOT TO BE RELEASED OR TRANSMITTED