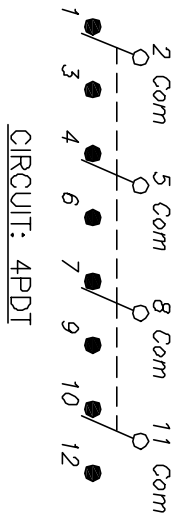


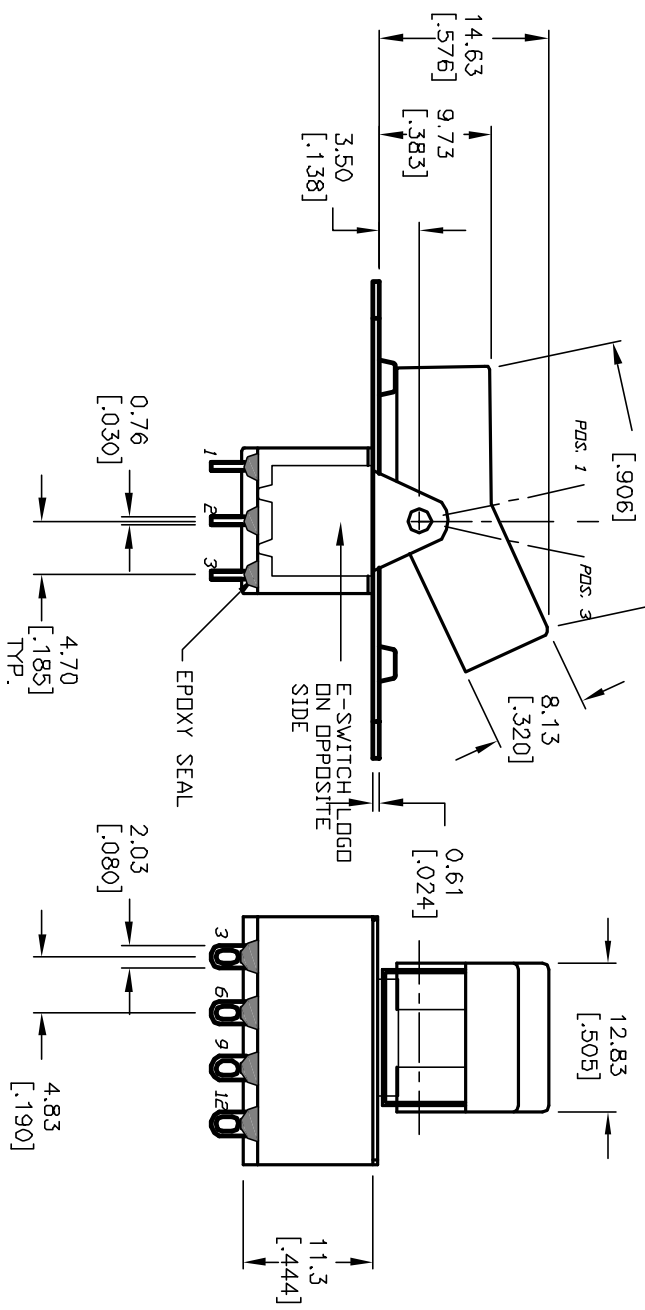
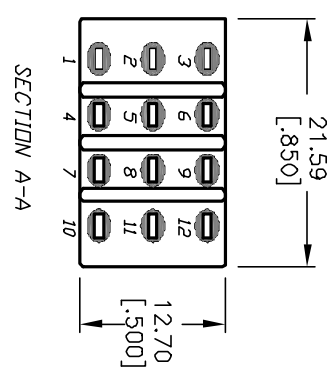
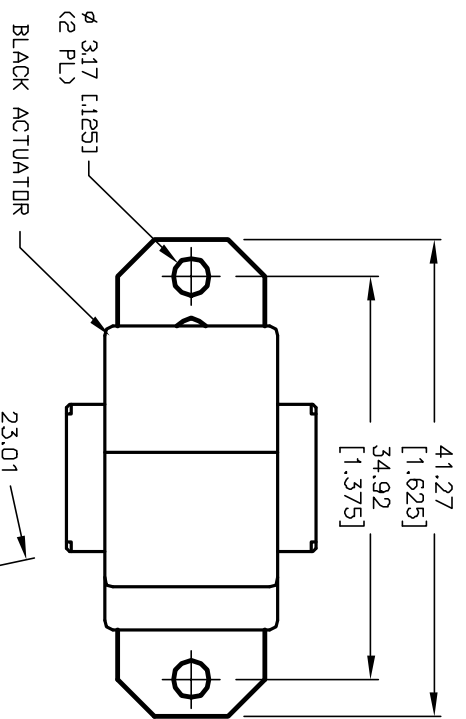
RECOMMENDED P.C.B. LAYOUT
NOT TO SCALE



| SWITCH FUNCTION | | |
|------------------------|--------|------------------------|
| PDS. 1 | PDS. 2 | PDS. 3 |
| | | |
| DN | NONE | DN |
| 2-3, 5-6 8-9, 11-12 | OPEN | 2-1, 5-4 8, 7 11-10 |

NOTES:

1. ALL DIMENSIONS IN MM [INCH]
2. GENERAL TOLERANCE: X.X=±0.4
X.XX=±0.25
3. TERM. NOS. FOR REF. ONLY
4. RATING: 0.4VA @20V AC or DC max.
5. CONTACT MATERIAL: Copper Alloy w/GOLD plating
over Nickel plate.
6. ELECTRICAL LIFE: 50,000 make-and-break cycles
at full load.
7. INSULATION RESISTANCE: 1,000M ohm min.
8. DIELECTRIC STRENGTH: 1,000 V RMS @sea level.
9. OPERATING TEMP.: -30°C to 85°C



| REV. | ECN No. | DESCRIPTION | DATE | CHKD |
|------|---------|-------------------------|---------|------|
| A | 12155 | RELEASED FOR PRODUCTION | 5/23/02 | CB |

| TITLE | SCALE | DATE | DR | DWG | REV |
|--------------------------|-------|---------|----|---------|-----|
| 300 4P-1 R3 (BLK) M1 R E | 1.5:1 | 5/15/02 | CB | T346005 | A |

E-SWITCH®

THE INFORMATION CONTAINED IN THIS DOCUMENT IS PROPRIETARY TO E-SWITCH AND IS NOT TO BE COPIED OR TRANSFERRED