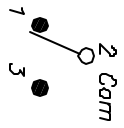


RECOMMENDED PANEL MOUNT



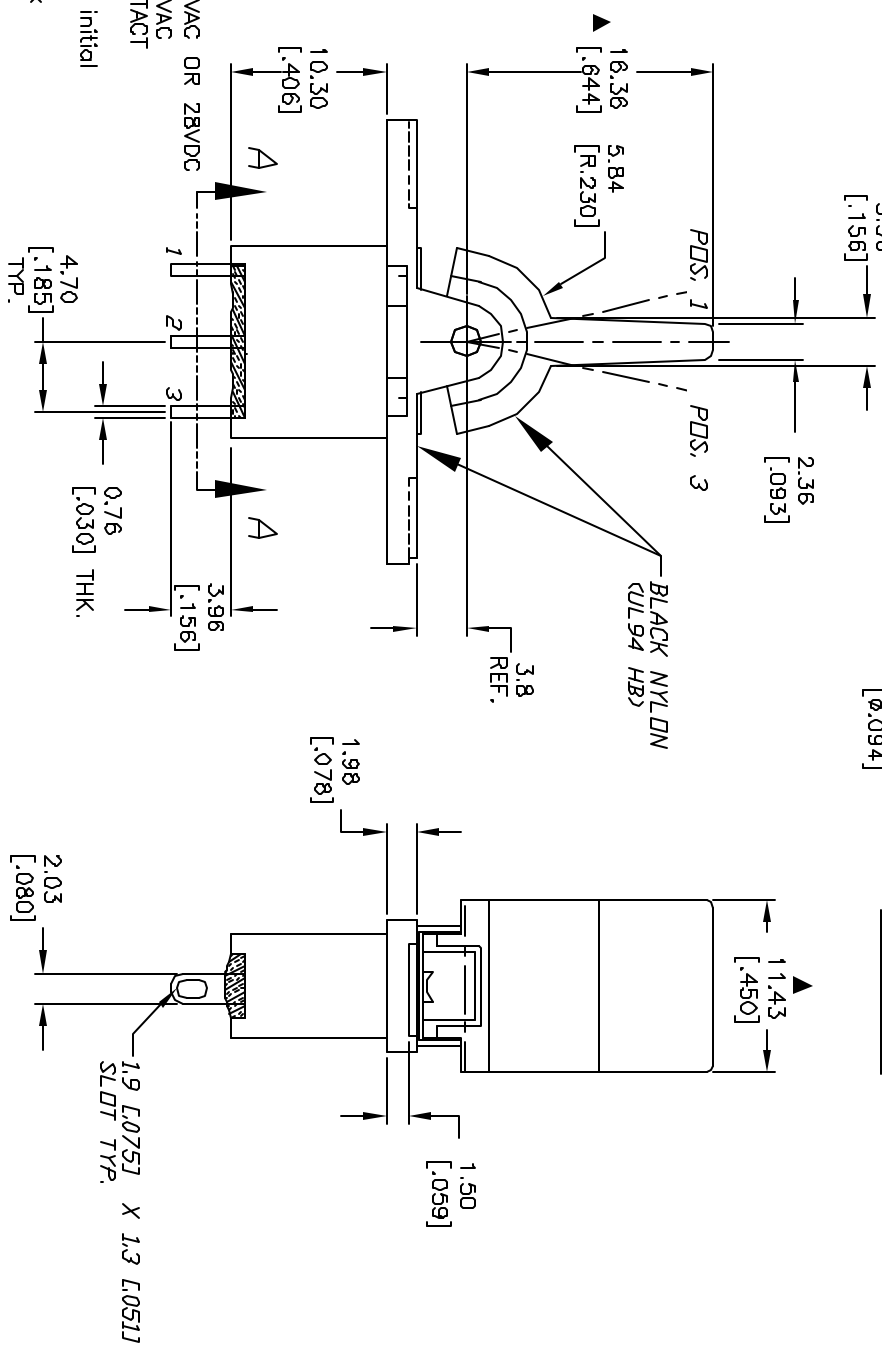
CIRCUIT: SPST

SWITCH FUNCTION			
POS. 1	POS. 2	POS. 3	
<DN>	OFF	<DN>	
2-3	OPEN	2-1	

< > = Momentary

NOTES:

1. ALL DIMENSIONS IN MM [INCH]
2. GENERAL TOLERANCE: X.X=±0.4
X.XX=±0.25
3. TERM. NOS. FOR REF. ONLY
4. RATING: 5 AMPS W/RESISTANT LOAD @120VAC OR 2BVDC
2 AMPS W/RESISTANT LOAD @250VAC
5. MATERIAL: FIXED TERMINAL & MOVING CONTACT
SILVER PLATED COPPER ALLOY
6. CONTACT RESISTANCE: 10mILLI Ohms max Initial
@2-4VDC, 100mA for AG & AU
7. ELECTRICAL LIFE: 30,000 make-and-break
cycles at full load.
8. INSULATION RESISTANCE: 1,000M ohm min.
9. DIELECTRIC STRENGTH: 1000V RMS @sec level
10. OPERATING TEMP.: -30°C to 85°C
11. ▲ DENOTES CRITICAL PARAMETER.



VIEW A-A

REV.	ECN No.	DESCRIPTION	DATE	CHKD	SCALE	DATE	DR	DWG	REV
A	13301	RELEASED FOR PRODUCTION	7/18/03	AR	2:1	7/18/03	AR	T301416	A
TITLE					300AWSP4R16M1QE				
THE INFORMATION CONTAINED IN THIS DOCUMENT IS PROPRIETARY TO E-SWITCH AND IS NOT TO BE COPIED OR TRANSFERRED					E-SWITCH®				