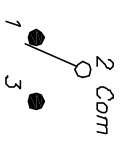


RECOMMENDED PCB LAYOUT  
SCALE 2:1

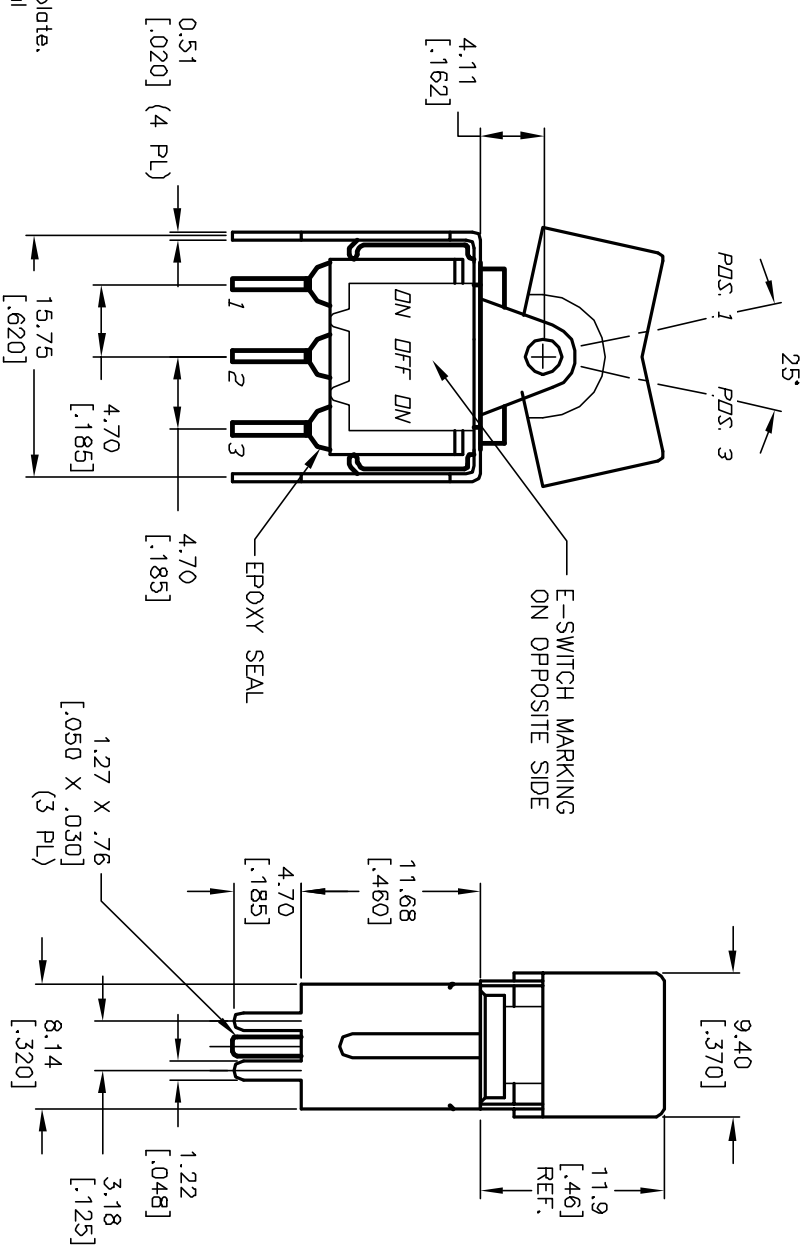
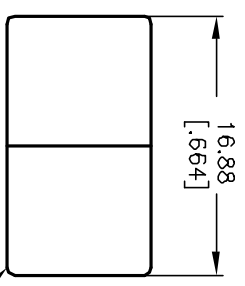


CIRCUIT: SPST

SWITCH FUNCTION		
PDS. 1	PDS. 2	PDS. 3
(DN)	(OFF)	(DN)
2-3	OPEN	2-1

( ) =Momentary

- NOTES:
1. ALL DIMENSIONS IN MM [INCH]
  2. GENERAL TOLERANCE: X.X=±0.4  
X.XX=±0.25
  3. TERM. NOS. FOR REF. ONLY
  4. RATING: 0.4VA @20V max.
  5. MATERIAL: FIXED TERMINAL & MOVING CONTACT  
Copper Alloy w/Gold Plate over Nickel CONTACT
  6. CONTACT RESISTANCE: 10mΩ Ohms max initial  
@2-4VDC, 100ma for AG & AU  
cycles at full load.
  7. ELECTRICAL LIFE: 50,000 make-and-break
  8. INSULATION RESISTANCE: 1,000M ohm min.
  9. DIELECTRIC STRENGTH: 1000V RMS @sea level
  10. OPERATING TEMP.: -30°C to 85°C



**E-SWITCH®**

REV.	ECN No.	DESCRIPTION	DATE	CHKD	SCALE	DATE	DR	DWG	REV
A	11603	RELEASED FOR PRODUCTION	8/7/01	CJB	2:1	8/7/01	CJB	T314016	A
TITLE					300 SP-4 J1 BLK VSS2 R E				
THE INFORMATION CONTAINED IN THIS DOCUMENT IS PROPRIETARY TO E-SWITCH AND IS NOT TO BE COPIED OR TRANSFERRED									