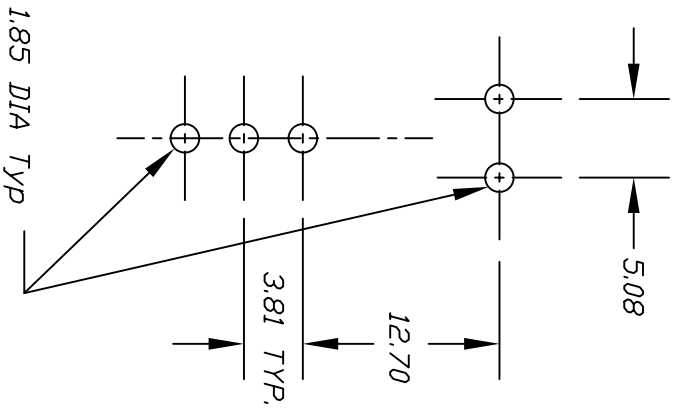
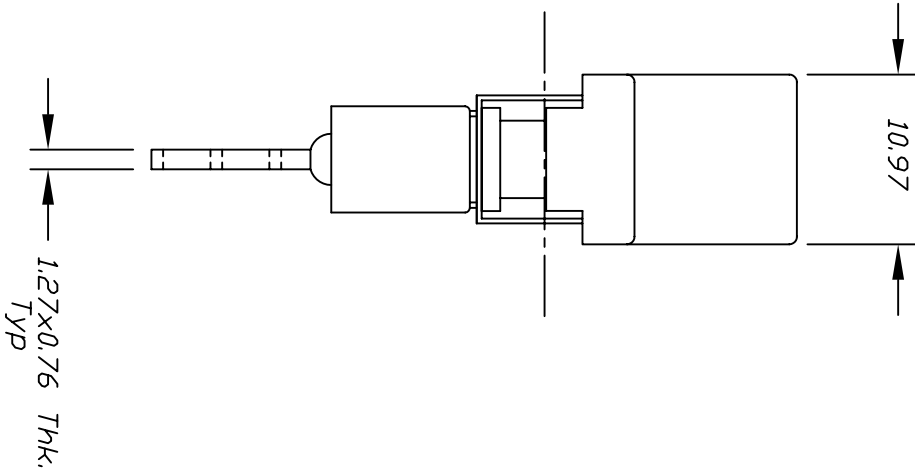
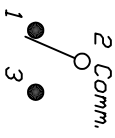


NOTES:

1. ALL DIMENSIONS IN MM
2. TERM. NDS. FOR REF. ONLY
3. RATING: 5A @120VAC OR 28VDC; 2A @250VAC.



RECOMMEND P.C.B. LAYOUT



CIRCUIT: SPDT

CONTACT CONFIGURATION

SWITCH FUNCTION		
POS. 1	POS. 2	POS. 3
<DN>	OFF	<DN>
2-3	OPEN	2-1

()=Momentary

TOLERANCES		TITLE	
0.0	±0.4	SCALE	2:1
0.00	±0.25	DATE	12/3/97
REV. A		DR	MM
DESCRIPTION		DWG	T314001
RELEASED FOR PRODUCTION		DATE	
THE INFORMATION CONTAINED IN THIS DOCUMENT IS PROPRIETARY TO E-SWITCH AND IS NOT TO BE COPIED OR TRANSFERRED		CHKD	
300 SP-4 J6 M7 Q E			
E-SWITCH®			
REV A			