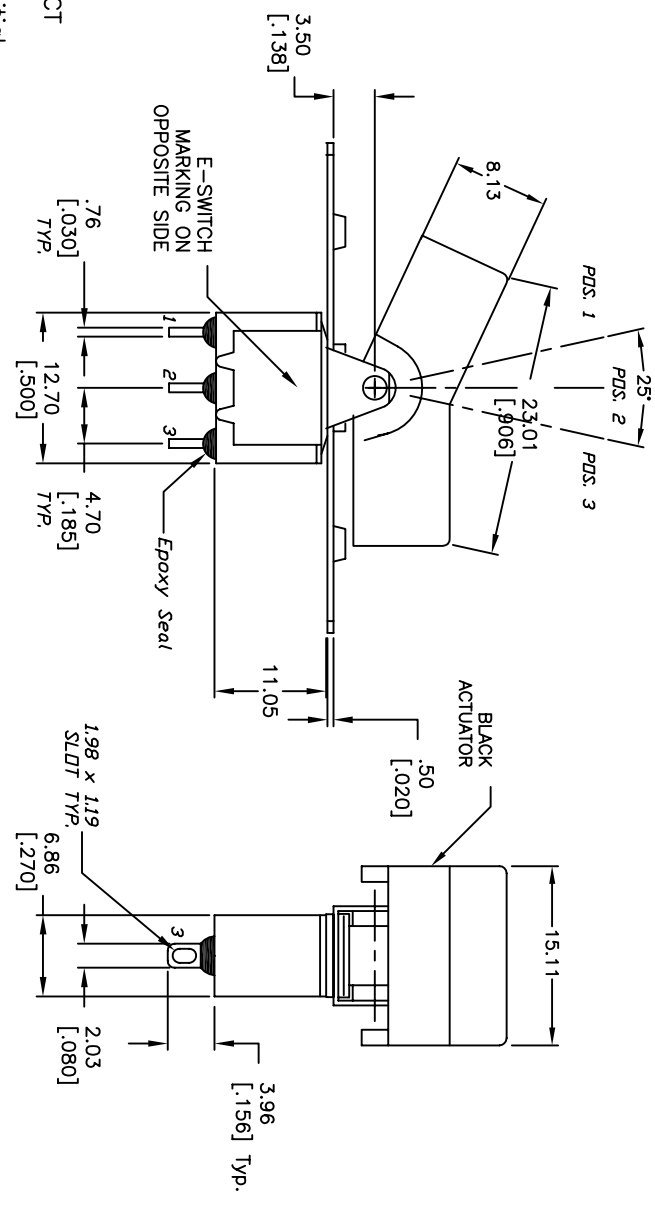
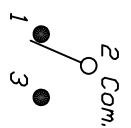


**CIRCUIT: SPDT**  
**CONTACT CONFIGURATION**

SWITCH FUNCTION			
PDS. 1	PDS. 2	PDS. 3	
<DN>	NONE	<DN>	
2-3	OPEN	2-1	



- NOTES:
1. ALL DIMENSIONS IN MM [INCH]
  2. GENERAL TOLERANCE: X.X=±0.4  
X.XX=±0.25
  3. TERM. NOS. FOR REF. ONLY
  4. RATING: 5A @120 VAC  
2A @250 VAC
  5. MATERIAL: FIXED TERMINAL & MOVING CONTACT  
Copper Alloy w/Silver plate
  6. CONTACT RESISTANCE: 10mILLI Ohms max initial  
@2-4VDC, 100mA for AG & AU
  7. ELECTRICAL LIFE: 40,000 make-and-break  
cycles at full load.
  8. INSULATION RESISTANCE: 1,000M Ohm min.
  9. DIELECTRIC STRENGTH: 1000V RMS @sea level
  10. OPERATING TEMP.: -30°C to 85°C

REV. A	ECN No. 15096	RELEASED FOR PRODUCTION	DATE 7/26/05	CHKD RC	TITLE	SCALE	DATE	DR	DWG	REV
		DESCRIPTION			300 SP4 R3 BLK M1 Q E	2:1	7/26/05	RC	T305003	A
<p>THE INFORMATION CONTAINED IN THIS DOCUMENT IS PROPRIETARY TO E-SWITCH AND IS NOT TO BE COPIED OR TRANSFERRED</p>										

