

# Distinctive Characteristics

Full face, Neon illumination in choice of red, amber, or green.

Neon lamp suited to 125V AC applications.

9-amp electrical capacity in compact body.

Built-in resistor for direct connection to 100-volt AC power source.

Low cost molded rocker.

Front panel, snap-in mounting assures labor-saving installation.

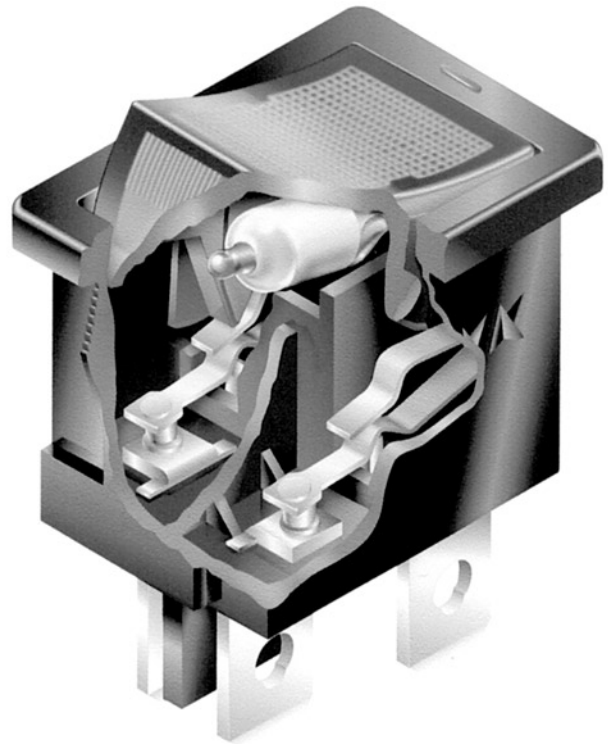
Single-break, snap-acting contact mechanism gives smooth actuation and audible feedback.

Quick-make, quick-break characteristic limits arcing and prolongs electrical life.

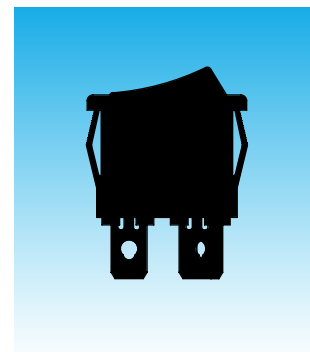
Stable stationary contact construction for high reliability.

Offset terminal alignment gives outstanding insulation resistance and dielectric strength.

Solder lug/.187" quick connect terminals can be used with connectors.



Actual Size



# General Specifications

### Electrical Capacity (Resistive Load)

**Power Level:** 9A @ 125V AC

### Other Ratings

<b>Contact Resistance:</b>	20 milliohms maximum
<b>Insulation Resistance:</b>	500 megohms minimum @ 500V DC
<b>Dielectric Strength:</b>	1,500V AC minimum between contacts for 1 minute minimum; 3,000V AC minimum between contacts & case for 1 minute minimum
<b>Mechanical Life:</b>	30,000 operations minimum
<b>Electrical Life:</b>	10,000 operations minimum
<b>Nominal Operating Force:</b>	10.0N
<b>Angle of Throw:</b>	30°

### Materials & Finishes

<b>Rocker:</b>	Polycarbonate
<b>Housing:</b>	Polyamide
<b>Movable Contactor:</b>	Beryllium copper with silver plating
<b>Movable Contacts:</b>	Silver alloy
<b>Stationary Contacts:</b>	Silver alloy
<b>Switch Terminals:</b>	Brass with silver plating
<b>Lamp Terminals:</b>	Brass with silver plating

### Environmental Data

<b>Operating Temp Range:</b>	-20°C through +85°C (-4°F through +185°F)
<b>Humidity:</b>	90 ~ 95% humidity for 96 hours @ 40°C (104°F)
<b>Vibration:</b>	10 ~ 55Hz with peak-to-peak amplitude of 0.75mm traversing the frequency range & returning in 1 minute; 3 right angled directions for 2 hours
<b>Shock:</b>	50G (490m/s²) acceleration (tested in 6 right angled directions, with 5 shocks in each direction)

### Installation

**Soldering Time & Temp:** Manual Soldering: See Profile B in Supplement section.

### Standards & Certifications

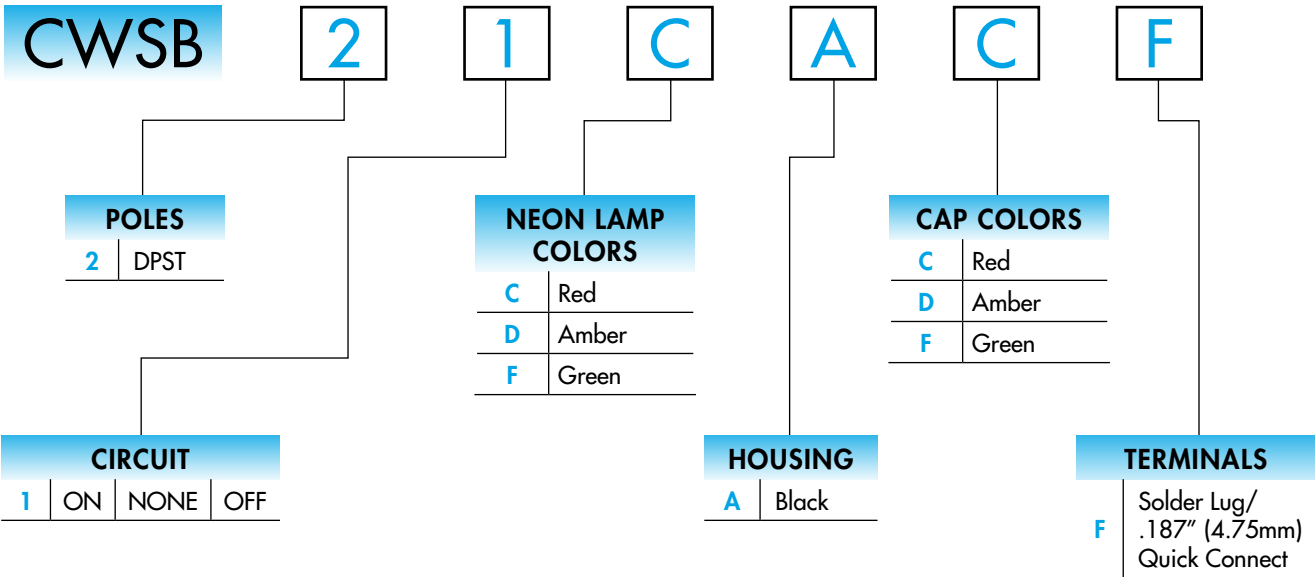


**UL Recognized:** 9A @ 125V AC  
UL File No. WOYR2.E44145.  
Markings on case are standard.

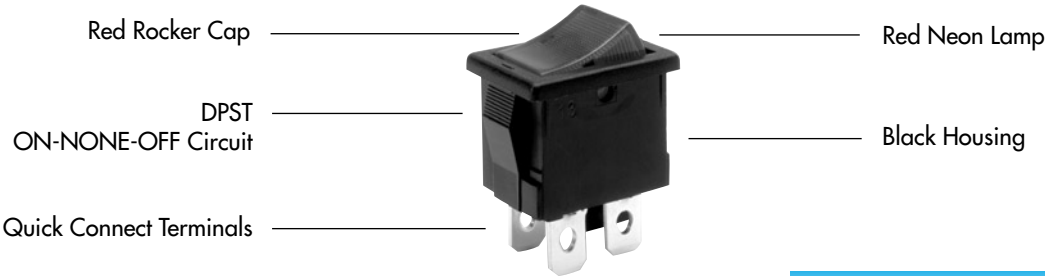


**CSA Certified:** 9A @ 125V AC  
CSA File No. 0701166-0-000.  
Markings on case are standard.

TYPICAL SWITCH ORDERING EXAMPLE



DESCRIPTION FOR TYPICAL ORDERING EXAMPLE  
**CWSB21CACF**



**IMPORTANT:**



Switches are supplied with UL & CSA markings on case. Specific models & ratings noted on General Specifications page.

POLE & CIRCUIT

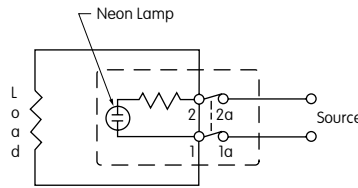
		Rocker Position			Connected Terminals			Throw & Switch/Lamp Schematic
Pole	Model	Down	Center	Up	Down	Center	Up	Note: Terminal numbers "1a" & "2a" are actually on the switch.
DP	<b>CWSB21</b>	ON	NONE	OFF	1-1a 2-2a	OPEN	OPEN	DPST

### NEON LAMP COLORS & SPECIFICATIONS

The Neon lamp is factory assembled and not available separately. The lamp circuit is synchronous to switching circuit.

The electrical specifications shown are determined at a basic temperature of 25°C.

Values for the built-in resistors are given in the accompanying table.



#### Colors

		<b>C</b> Red	<b>D</b> Amber	<b>F</b> Green
Voltage	V	125V AC	125V AC	125V AC
Internal Series Resistance		33K ohms	33K ohms	68K ohms
Current	I	1.4mA	1.4mA	0.6mA
Endurance	Hours	15,000	15,000	8,000

### HOUSING

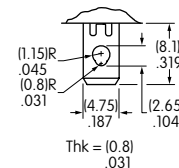
**A** Black Housing with Snap-in Mounting

On Off (I O) symbols are molded on the bezel.



### TERMINALS

**F** Solder Lug/.187" (4.75mm) Quick Connect



### CAP COLOR CODES

Cap Colors Available

**C** Red **D** Amber **F** Green

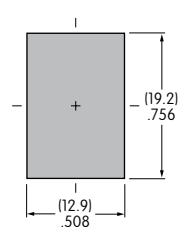
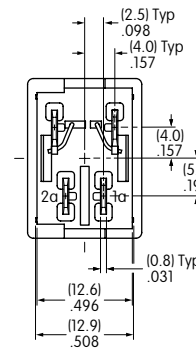
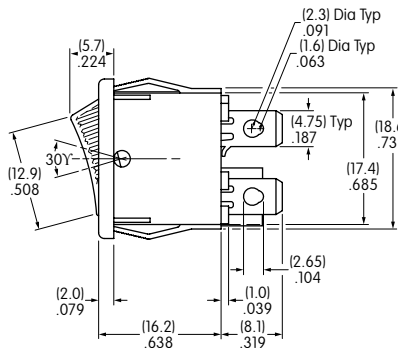
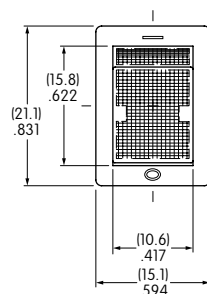


Caps are factory assembled and are not available separately.

### TYPICAL SWITCH DIMENSIONS

Neon Illuminated

Double Pole



Panel Thickness  
.030" ~ .079"  
(0.75mm ~ 2.0mm)

CWSB21CACF