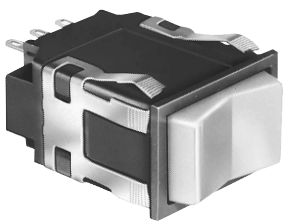


Manual Switches
Electronic Control Rocker

AML24 Series

INCANDESCENT OR NON-LIGHTED DISPLAY



- Silver or gold contacts.
- 2 or 3 position operation.
- UL recognized, CSA certified.
- Lamps can be furnished installed or ordered separately.
- Lamp circuit independent of switch circuit.

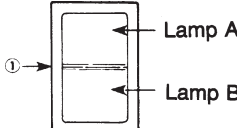
Electrical Data page 19
Rockers page 51
Lamps page 58
Accessories pages 56, 57
Mounting Dimensions pages 59, 62



*AML24 Series: 1 pole and 2-pole only.

AML24 ORDER GUIDE
AML24 E

Table with 6 columns: Housing Type, Bezel Color, Incandescent Lamp Type, Terminal Type, Circuitry Codes, and Operating Action. It lists various configurations for the AML24 E switch, including housing types (E, F, G), bezel color (B), lamp types (A, B, C, E), terminal types (2, 3), circuitry codes (AA), and operating actions (01).



The "MICRO SWITCH" identification is shown on this side of the switch housings.

Example: AML24EBA2AA01
Rectangular non-lighted rocker switch housing; black bezel; .110 x .020 terminals; with one circuit ON and one circuit OFF in each extreme operator position (maintained).

CIRCUITRY

Table showing circuitry configurations for Silver and Gold contacts in 2-Position and 3-Position switches. It includes terminal diagrams and wiring connections for various configurations (AA, AC, CA, CC, BA, BC, DA, DC).

OPERATING ACTION

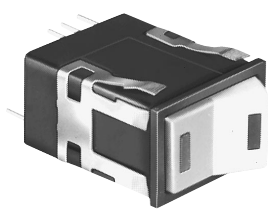
Table showing operating actions for 2-Position and 3-Position switches. It lists maintenance (Maint.), momentary (Mom.), and maintained (Maint.) states for different operating actions (01, 02, 03, 04, 05, 06, 07).

Manual Switches

Electronic Control Rocker

AML26 Series

LED DISPLAY



Rocker operators ordered separately.
LEDs are not replaceable.

FEATURES

- Identical to AML24, except furnished with one or two rectangular high efficiency LED's which give flush display area and wide angle indication.
- Available with or without diode protection for LED's.
- LED circuit independent of switch circuit.

Electrical Data	page 19
Rockers	page 52
Lamps and LEDs	page 58
Accessories	page 57
Mounting Dimensions	pages 59, 62

- 5 thru 24 VDC LED devices have internal resistor to maintain current at nominal 20 mA.
- UL recognized, CSA certified.



*AML26 Series: 1 pole and 2-pole only.

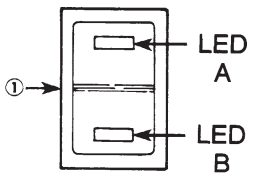
AML26 ORDER GUIDE

AML26 F

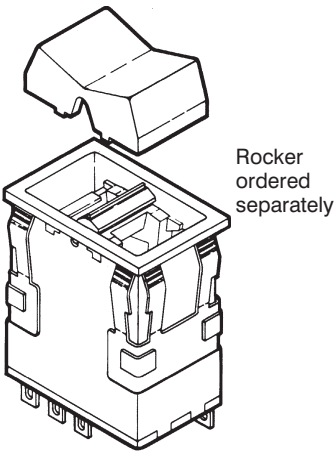
Housing Type	Bezel Color	LED Voltage	Terminal Type/ Diode Protection	Circuitry Codes	Operating Action	LED Color (LED A)	LED Color (LED B)
AML26 F 1 LED	B Black	B V*	2 .110 × .020 (Solder or Quick-Connect)	Insert code letters as shown in Circuitry Chart	Insert code numbers from Operating Action Chart	R Red	R Red
AML26 G 2 LED's		C 5 V	3 .025 × .025 (Printed Ckt., or Push-On)	LED version available only with AA		Y Yellow	Y Yellow
		D 10 V	8 .110 × .020 w/Diode for LED protection	BA		G Green	G Green
		E 15 V		CA		X No LED	X No LED
		F 24 V		DA circuitry			

*See LED application information for devices without current-limiting resistor, page 58.

Example: **AML26FBB2AA01RX**
Rectangular rocker switch; illuminated with one LED, this device has a black bezel, .110 × .020 terminals; with one circuit ON and one circuit OFF in each extreme operator position (maintained).



① The "MICRO SWITCH" identification is shown on this side of the switch housings.



Rocker ordered separately

Manuals