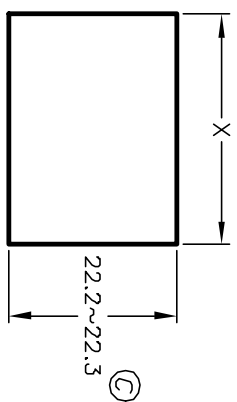
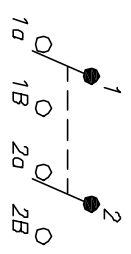


PANEL THICKNESS	X dimension
0.75~1.25 [0.030~0.049]	30.0 +0.2 [1.181]
1.25~2.0 [0.049~0.079]	30.2 +0.2 [1.189]
2.0~3.0 [0.079~.118]	30.6 +0.2 [1.205]



RECOMMENDED PANEL MOUNTING

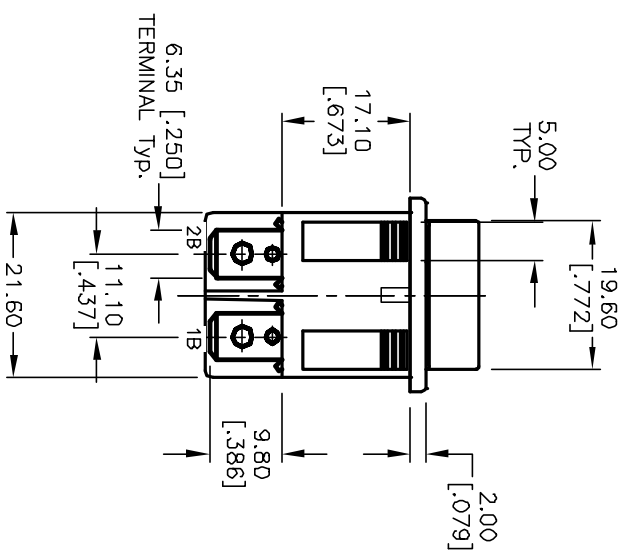
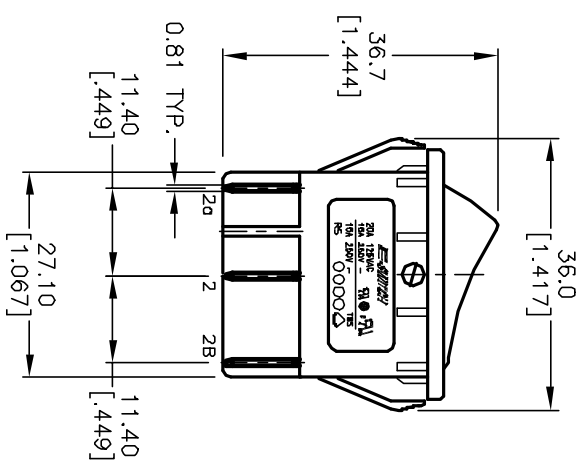
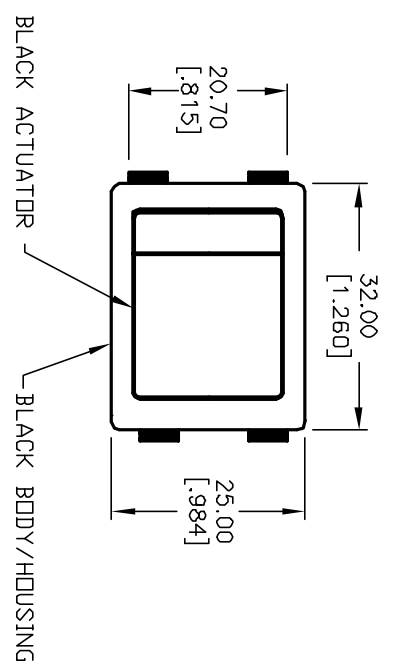
NOT TO SCALE



CIRCUIT: DPDT  
ON-ON

NOTES:

1. ALL DIMENSIONS IN MM [INCH]
2. GENERAL TOLERANCE: X.X=±0.4  
X.XX=±0.25
3. TERM. NOS. FOR REF. ONLY
4. RATING: 20A @125VAC;  
15A @250VAC. (Normal Conditions)
5. MATERIAL:  
CONTACT SURFACE: Coin Silver, Silver Plated.  
TERMINAL: Copper ALLOY w/Silver plate
6. ELECTRICAL LIFE: ≥10,000 cycles
7. MECHANICAL LIFE: 30,000 cycles
8. CONTACT RESISTANCE: <20 MILLI-Ohms initial
9. DIELECTRIC STRENGTH: >1,500V AC 1min  
>3,000V between poles.



C	12776	REVISED PANEL CUTOUT	1/29/03	CJB
B	12296	REVISED /ADD NOTES 5-9	10/14/02	CJB
A	10152	RELEASED FOR PRODUCTION	3/15/99	MM
REV.	ECN No.	DESCRIPTION	DATE	CHKD

TITLE		SCALE	DATE	DR	DWG	REV
R5C BLK BLK E F 0		1:1	3/15/99	MM	M050204	C



THE INFORMATION CONTAINED IN THIS DOCUMENT IS PROPRIETARY TO E-SWITCH AND IS NOT TO BE COPIED OR TRANSFERRED