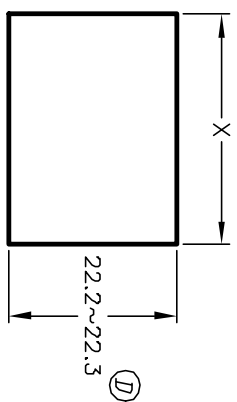
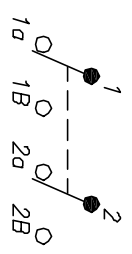


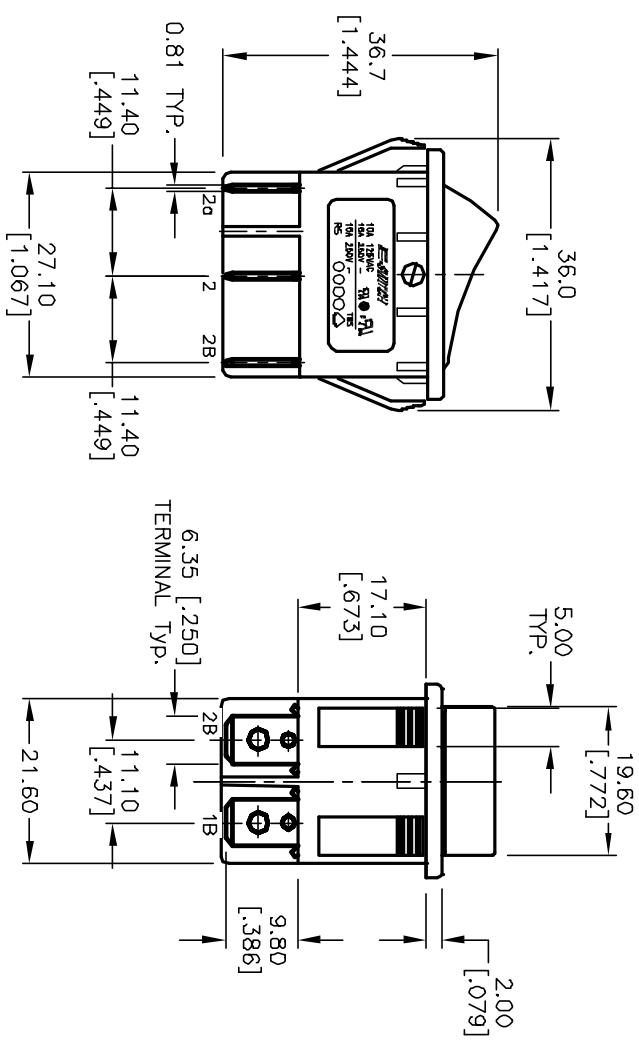
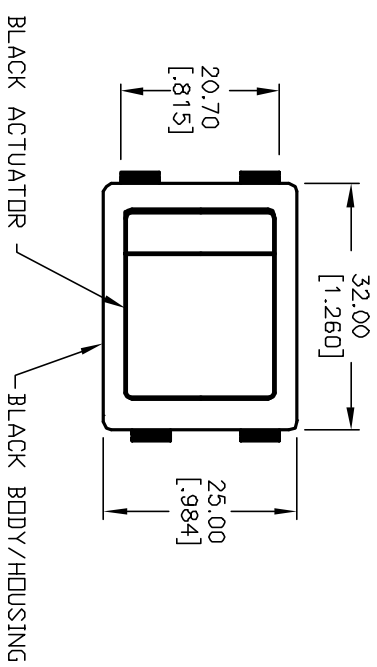
PANEL THICKNESS	X dimension
0.75~1.25 [0.030~0.049]	30.0 +0.2 [1.181]
1.25~2.0 [0.049~0.079]	30.2 +0.2 [1.189]
2.0~3.0 [0.079~.118]	30.6 +0.2 [1.205]



RECOMMENDED PANEL MOUNTING  
 NOT TO SCALE



NOTES:  
 1. ALL DIMENSIONS IN MM [INCH]  
 2. GENERAL TOLERANCE: X.X=±0.4  
 X.XX=±0.25  
 3. TERM. NOS. FOR REF. ONLY  
 4. RATING: 15A @125VAC;  
 10A @250VAC. (Normal Conditions)  
 5. MATERIAL:  
 CONTACT SURFACE: Coin Silver, Silver Plated.  
 TERMINAL: Copper Alloy w/Silver plate  
 6. ELECTRICAL LIFE: ≥10,000 cycles  
 7. MECHANICAL LIFE: 30,000 cycles  
 8. CONTACT RESISTANCE: <20 mΩ-Ohms initial  
 9. DIELECTRIC STRENGTH: >1,500V AC 1min  
 >3,000V between poles.



REV.	ECN No.	DESCRIPTION	DATE	CHKD
D	12776	REVISED PANEL CUTOUT	1/29/03	CJB
C	12725	REVISED NOTE 4	1/13/03	CJB
B	12296	REVISED /ADD NOTES 5-9	10/10/02	CJB
A	10153	RELEASED FOR PRODUCTION	3/15/99	MM

TITLE		SCALE	DATE	DR	DWG	REV
RSD BLK BLK E F 0		1:1	3/15/99	MM	M050205	D



THE INFORMATION CONTAINED IN THIS DOCUMENT IS PROPRIETARY TO E-SWITCH AND IS NOT TO BE COPIED OR TRANSFERRED