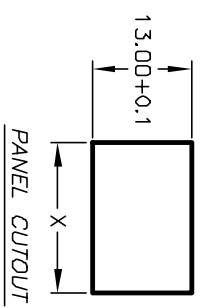
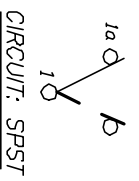


PANEL THICKNESS	X
0.75-1.25 [.030-.049]	19.2 [.756]
1.25-2.0 [.049-.079]	19.4 [.764]
2.0-3.0 [.079-.118]	19.8 [.780]



SWITCH FUNCTION	
POS. 1	POS. 2
DN	OFF
1-1a	OPEN



- NOTES:
1. ALL DIMENSIONS IN MM [INCH]
 2. GENERAL TOLERANCE: X.X=±0.4 X.XX=±0.25
 3. TERMINAL NUMBERS FOR REF ONLY.
 4. RATING: 15A @ 125VAC OR 6A @ 250VAC
 5. MECHANICAL LIFE: 15,000 cycles
 6. ELECTRICAL LIFE: 10,000 cycles
 7. INSULATION RESISTANCE: >1000 Mega Ω
 8. CONTACT RESISTANCE: <20 Mega Ω
 9. DIELECTRIC STRENGTH: >1500 V 1 minute >3000 V between poles

E-SWITCH®

B	11664	REVISED PART DESCRIPTION	9/19/01	CJB
REV.	ECN No.	DESCRIPTION	DATE	CHKD

TITLE	R19664 BLK BLK G S
SCALE	1.5:1
DATE	11/21/96
DR	MM
DWG	M301208
REV	B

THE INFORMATION CONTAINED IN THIS DOCUMENT IS PROPRIETARY TO E-SWITCH AND IS NOT TO BE COPIED OR TRANSFERRED