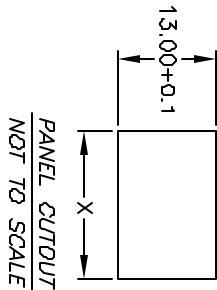
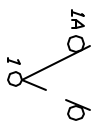


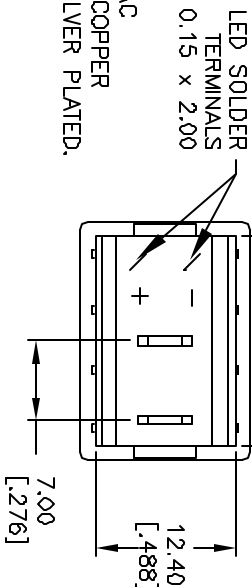
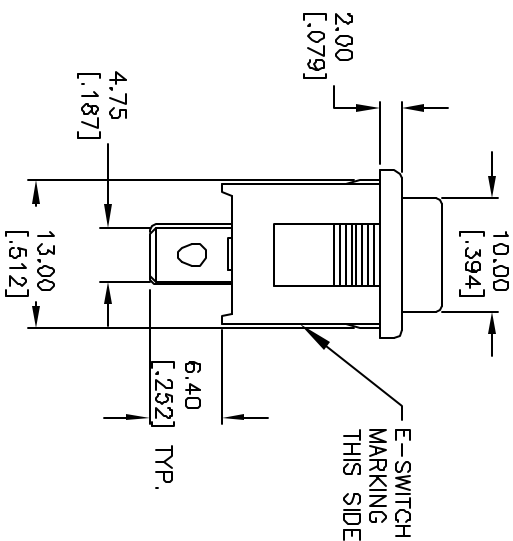
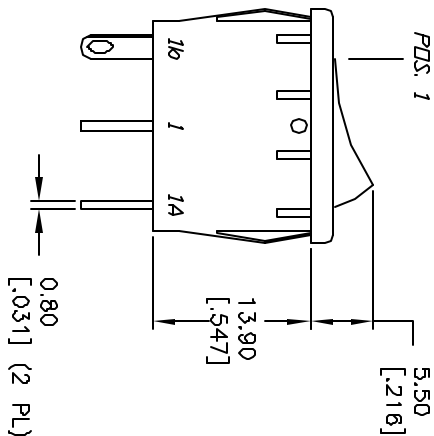
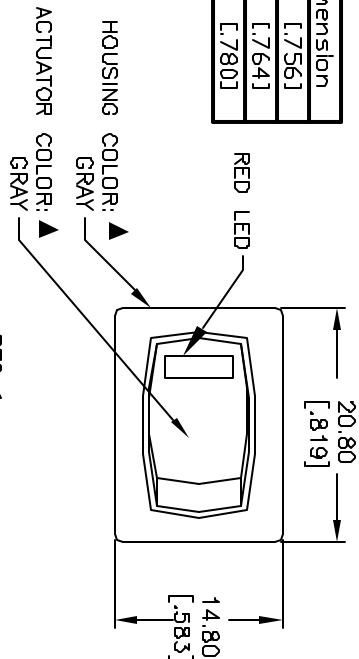
PANEL THICKNESS	X dimension
0.75-1.25 [.030-.0491]	19.2-.01 [.7561]
1.25-2.0 [.049-.079]	19.4-.01 [.764]
2.0-3.0 [.079-.118]	19.8-.01 [.780]



SWITCH FUNCTION	
POS. 1	POS. 2
DN	OFF
1-1a	OPEN



CIRCUIT: SPST



- NOTES:
1. ALL DIMENSIONS IN MM [INCH]
 2. GENERAL TOLERANCE: X.X=±0.4
X.XX=±0.25
 3. TERMINAL NUMBERS FOR REF ONLY
 4. RATINGS: 15A @ 125VAC OR 6A @ 250VAC
 5. MATERIALS: (TERMINALS) SILVER PLATED COPPER (CONTACTS) COIN SILVER, SILVER PLATED.
 6. CONTACT RESISTANCE: <20 MEGA
 7. ELECTRIC LIFE: 10,000 CYCLES
 8. INSULATION RESISTANCE: >1000 MEGA
 9. DIELECTRIC STRENGTH: >1500V 1 MINUTE
>3000V BETWEEN POLES
 10. ▲ DENOTES CRITICAL PARAMETER.

RED L.E.D.

PARAMETERS	SYMBOL	MAX.	TYP.	UNITS
POWER DISSIPATION	P _d	80		mW
AVE FORWARD CURRENT	I _{af}	--		mA
PEAK FORWARD CURRENT	I _{pf}	100		mA
REVERSE VOLTAGE	V _r	5		V
FORWARD VOLTAGE	V _f	2.6	1.7	V
REVERSE CURRENT	I _r		100	µA
EMISSION WAVELENGTH	λ _p		660	nm
LUMINOUS INTENSITY	I _v		30	mcd

A	13284	RELEASED FOR PRODUCTION	7/11/03	AR
REV.	ECN No.	DESCRIPTION	DATE	CHKD

TITLE		SCALE	DATE	DR	DWG	REV
R1966AGRYGREFRED		1.5:1	7/11/03	AR	M301234	A

E-SWITCH®

THE INFORMATION CONTAINED IN THIS DOCUMENT IS PROPRIETARY TO E-SWITCH AND IS NOT TO BE COPIED OR TRANSFERRED