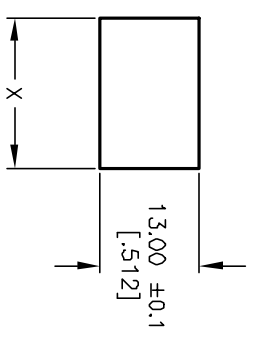


INCANDESCENT BULB

PARAMETERS	SYMBOL	MAX.	UNITS
LAMP VOLTAGE (AC/DC)	V	6	V
POWER DISSIPATION	P _d	2	Watts
CURRENT	I	200	mA



- NOTES:
1. ALL DIMENSIONS IN MM [INCH]
 2. GENERAL TOLERANCE: X.X=±0.4
X.XX=±0.25
 3. RATING: 6A @250VAC;9A @125VAC (UL, CSA)
4(1)A @250VAC (VDE, SEMEKO, NEMKO, FIMKO, DEMKO)
 4. CONTACT RESISTANCE: 20MILLIOHMS TYP. INITIAL
 5. INSULATION RESISTANCE: 1000Megohms
 6. DIELECTRICAL STRENGTHS 1500V RMS min. @SEA LEVEL
3000V RMS @SEA LEVEL
 7. MECHANICAL LIFE: 50,000 CYCLES.
 8. ELECTRICAL LIFE: 10,000 CYCLES.

REV.	ECN No.	DESCRIPTION	DATE	CHKD
A	12949	RELEASED FOR PRODUCTION	3/24/03	AR

TITLE	SCALE	DATE	DR	DWG	REV
R1973ABLKDRGER6	1.5:1	3/24/03	AR	M400059	A

E-SWITCH®

THE INFORMATION CONTAINED IN THIS DOCUMENT IS PROPRIETARY TO E-SWITCH AND IS NOT TO BE COPIED OR TRANSFERRED