



SERIES R4 SWITCHES

ROCKER SWITCHES - ILLUMINATED



FEATURES & BENEFITS

- ▶ Fully illuminated actuator option
- ▶ Neon & incandescent lamp options

APPLICATIONS/MARKETS

- ▶ Industrial
- ▶ Audio/visual
- ▶ Lighting ballast

SPECIFICATIONS

Contact Rating*:	Versions D,G,I - 10A @ 250V, 15A @ 125V AC Versions A,B,C,E,F,H - 15A @ 250V, 20A @ 125V AC
Life Expectancy (Mechanical):	30,000 cycles
Life Expectancy (Electrical):	6,000 cycles
Contact Resistance:	20 mΩ max. typical initial @ 2-4 VDC
Insulation Resistance:	>1,000MΩ
Dielectric Strength:	>1,500V 1 minute between terminals
Safety Std. Approval:	UL, VDE
Operating Temp:	-20°C to 55°C

MATERIALS

Body:	Nylon 6/6 (UL94 V-2)
Rocker:	Nylon 6/6 (UL94 V-2)
Contact Surface:	Silver over nickel alloy
Terminal:	Silver plated copper alloy
Illuminated Rockers:	Neon lamp or Incandescent bulb



HOW TO ORDER

SERIES	CIRCUIT	HOUSING COLOR	ACTUATOR COLOR	MARKING	TERMINATION	LAMP VOLTAGE
R4	See Below	BLK = Black WHT= White GRY = Grey	BLK = Black WHT= White RED = Red RIL = Red ILL.* GIL = Green ILL.* YIL = Yellow ILL.*	A B C D E F G H I J K L	F = Faston	0 = No Lamp 1 = 125V AC ¹ 2 = 250V AC ¹ 3 = 12V DC ² 4 = 24V DC ² ¹ Neon Bulb ² Incandescent Bulb
CIRCUIT CODE:						
A = SPST On-Off						
B = SPST On-(Off) Illuminated						
C = SPDT On-On						
D = SPDT On-Off-On						
E = SPDT On-(On)						
F = SPST Off-(On)						
G = SPDT (On)-Off-(On)						
H = SPDT On-None-(Off)						
I = SPDT On-Off-(On)						
J = SPST On-Off Fully Illuminated						
() = Momentary						



Example Ordering Number

R4-B-BLK-YIL-E-F-2

* To be used with the "J" circuit only

Specifications subject to change without notice.



SERIES R4 SWITCHES

ROCKER SWITCHES - ILLUMINATED

TACT SWITCHES

NAVIGATION SWITCHES

PUSHBUTTON SWITCHES

TOGGLE SWITCHES

ROCKER SWITCHES

SLIDE SWITCHES

SNAP-ACTION SWITCHES

DIP SWITCHES

KEYLOCK SWITCHES

ROTARY SWITCHES

DETECTOR SWITCHES

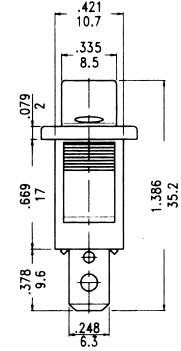
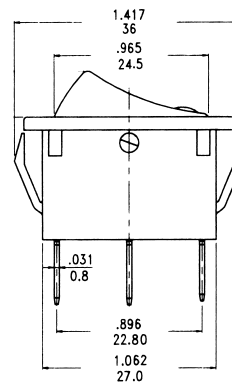
CAP OPTIONS

SPST



Circuit Code	POS 1	POS 2
A	ON	OFF
B	ON	(OFF) Illum.
F	(ON)	OFF
H	ON	(OFF)
J	ON	OFF Illum.
Term. Comm.	1-1a	OPEN

() = Momentary

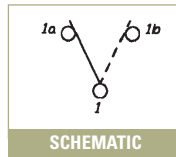


SPDT



Circuit Code	POS 1	POS 2	POS 3
C	ON	NONE	ON
D	ON	OFF	ON
E	ON	NONE	(ON)
G	(ON)	OFF	(ON)
I	ON	OFF	(ON)
Term. Comm.	1-1a	OPEN	1-1b

() = Momentary



NOTE: Illumination not available for SPDT versions.

TERMINATION OPTIONS

F FASTON



0.81 (.032) THK terminals designed for Quick Connect connectors available from AMP Industries, Harrisburg, PA 17105. (Or equivalent).



Panel Thickness	X mm (inch)
.75 - 1.25 (.030)-(.049)	30.1±.1 (1.18)
1.25 - 2.00 (.049)-(.079)	30.3±.1 (1.19)
2.00 - 3.00 (.079)-(.118)	30.7±.1 (1.20)

PANEL MOUNTING

MARKING OPTIONS

