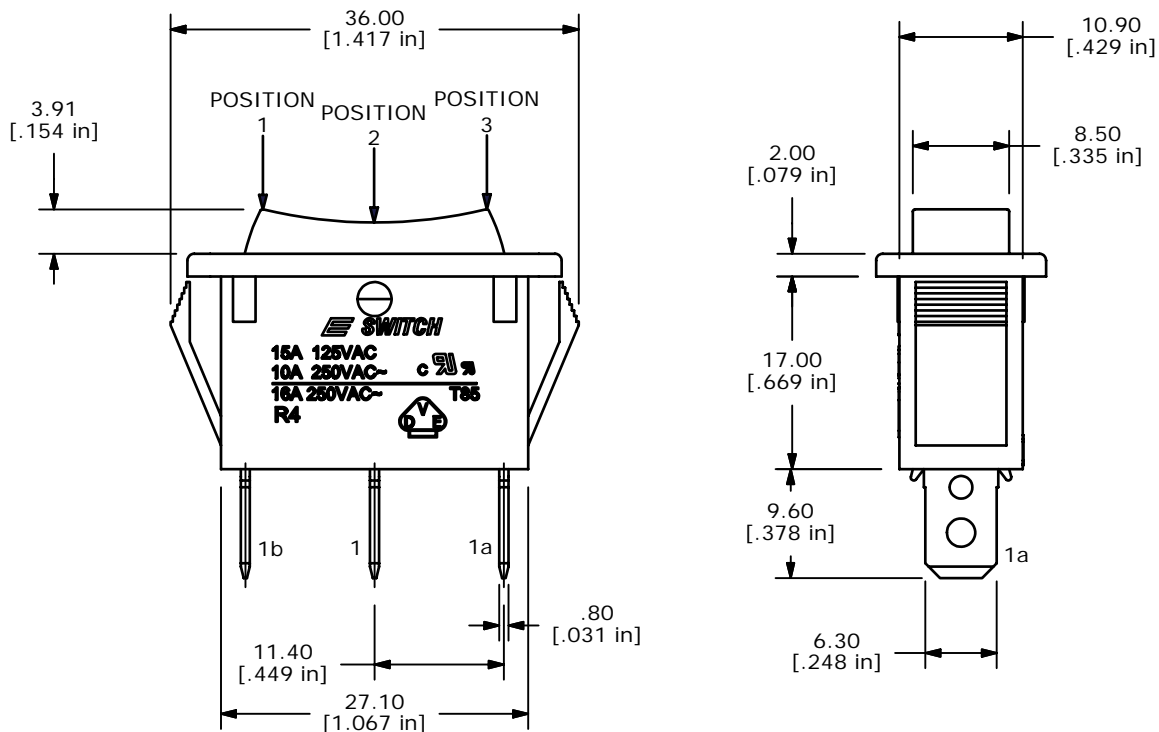
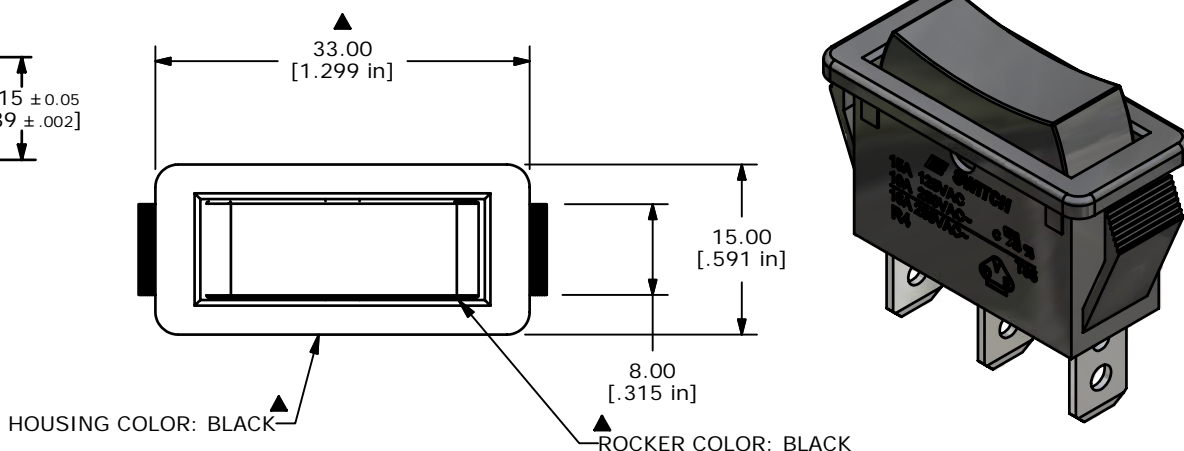


| PANEL THICKNESS | X ± 0.05 |
|-----------------|----------|
| 0.75-1.25       | 29.65    |
| 1.25-2.00       | 30.15    |
| 2.00-3.00       | 30.50    |

| SWITCH FUNCTION |        |        |
|-----------------|--------|--------|
| POS. 1          | POS. 2 | POS. 3 |
|                 |        |        |
| (ON)            | OFF    | (ON)   |
| 1-1a            | OPEN   | 1-1b   |

(ON)=MOMENTARY

- NOTES:
- ALL DIMENSIONS IN MM [INCH]
  - GENERAL TOLERANCE: X.X ± 0.4  
X.XX ± 0.25
  - TERM. NOS. FOR REF. ONLY
  - RATING: 15A 125VAC, 10A 250VAC UL APPROVED  
10A 250VAC VDE APPROVED
  - MECHANICAL LIFE: >30,000 CYCLES
  - ELECTRICAL LIFE: < 20mOHMS (INITIAL)
  - DIELECTRIC STRENGTH: > 1500V 1 min
  - OPERATING TEMPERATURE: TERMINAL SIDE: -20°C to 85°C  
ROCKER SIDE: -20°C to 55°C
  - FLAMABILITY: UL94 V-2
  - ▲ DENOTES CRITICAL PARAMETER
  - 2002/95/EC (ROHS) COMPLIANT



| REV | PCR NO | DESCRIPTION           | DATE    | BY |
|-----|--------|-----------------------|---------|----|
| C   | 15995  | UPDATE NOTES AND DIMS | 5/2/06  | CT |
| B   | 15817  | REVISE AND REDRAWN    | 2/23/06 | PH |

THE INFORMATION CONTAINED IN THIS DOCUMENT IS PROPRIETARY TO E-SWITCH AND IS NOT TO BE COPIED OR TRANSFERRED

|                    |                |       |             |       |
|--------------------|----------------|-------|-------------|-------|
| TITLE R4GBLKBLKEF0 |                |       |             |       |
| SCALE 1:1          | DATE 3/31/1999 | DR MM | DWG M040110 | REV C |