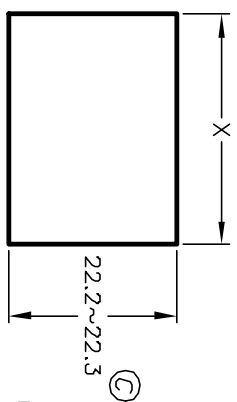
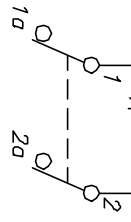


PANEL THICKNESS	X dimension
0.75~1.25 [0.030~0.049]	30.0 +0.2 [1.181]
1.25~2.0 [0.049~0.079]	30.2 +0.2 [1.189]
2.0~3.0 [0.079~0.118]	30.6 +0.2 [1.205]



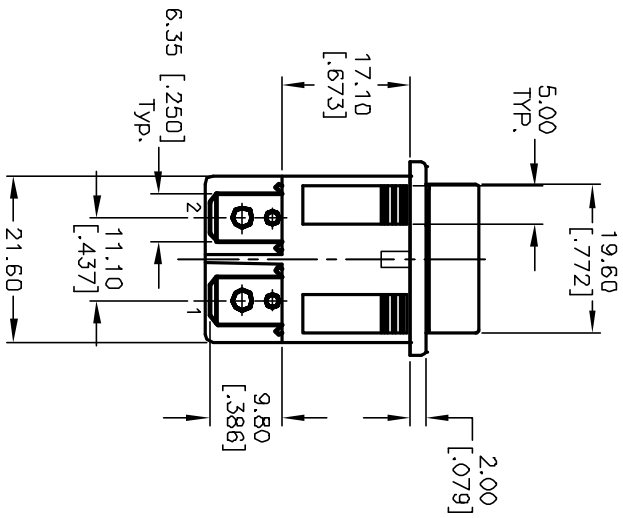
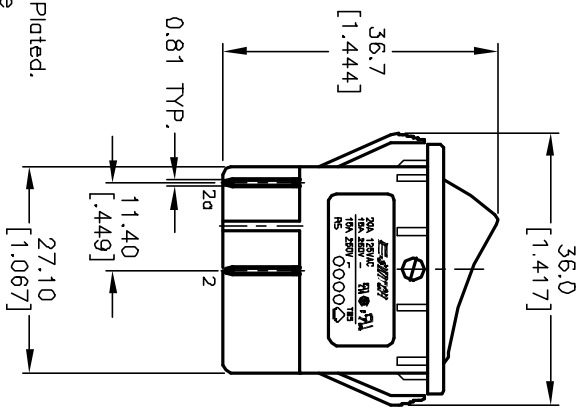
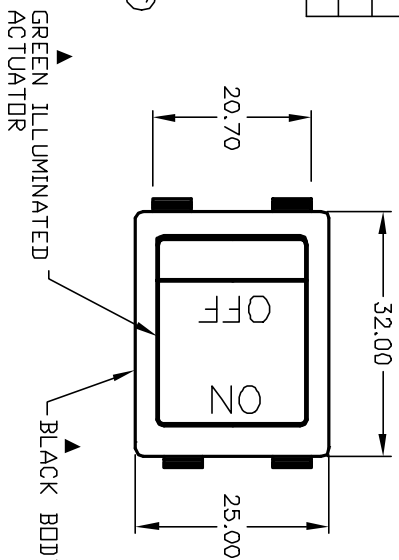
RECOMMENDED PANEL MOUNTING

NOT TO SCALE
(ILLUMINATED)



NOTES:

1. ALL DIMENSIONS IN MM [INCH]
2. GENERAL TOLERANCE: X.XX=±0.4
X.XX=±0.25
3. TERM. NOS. FOR REF. ONLY
4. RATING: 20A @125VAC;
15A @250VAC. (Normal Conditions)
5. LAMP VOLTAGE: 250V (NEON BULB)
6. MATERIAL:
CONTACT SURFACE: Coin Silver, Silver Plated.
TERMINAL: Copper ALLOY w/Silver plate
7. ELECTRICAL LIFE: ≥10,000 cycles
8. MECHANICAL LIFE: 30,000 cycles
9. CONTACT RESISTANCE: <20 mΩ-Dhms initial
10. DIELECTRIC STRENGTH: >1,500V AC 1min
>3,000V between poles.



NEON BULB

PARAMETERS	SYMBOL	MAX.	UNITS
LAMP VOLTAGE (AC)	V	250	V
STARTUP VOLTAGE	Vs	85	V
CURRENT	I	1.2	mA
SERIES RESISTANCE	R	150	DHMS

C	12776	REVISED PANEL CUTOUT	1/29/03	CJB	<p>E-SWITCH®</p> <p>RSB BLK GRN IF2</p>	SCALE	DATE	DR	DWG	REV
B	12296	REVISED	10/4/02	CJB		1:1	7-12-00	GLG	M050209	C
A	10757	RELEASED FOR PRODUCTION	7-12-00	CJB		TITLE				
REV.	ECN No.	DESCRIPTION	DATE	CHKD						
<p>THE INFORMATION CONTAINED IN THIS DOCUMENT IS PROPRIETARY TO E-SWITCH AND IS NOT TO BE COPIED OR TRANSFERRED</p>										