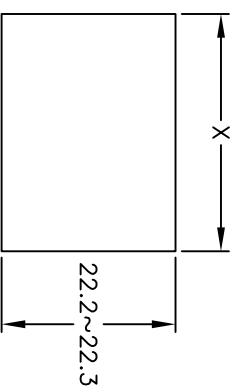
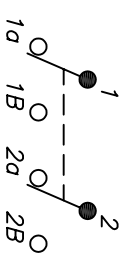


PANEL THICKNESS	X dimension
0.75~1.25 [0.30~0.49]	29.5~29.6 $\text{\textcircled{B}}$
1.25~2.0 [0.49~0.79]	30.5~30.6 $\text{\textcircled{B}}$
2.0~3.0 [0.79~1.18]	30.65~30.75 $\text{\textcircled{B}}$



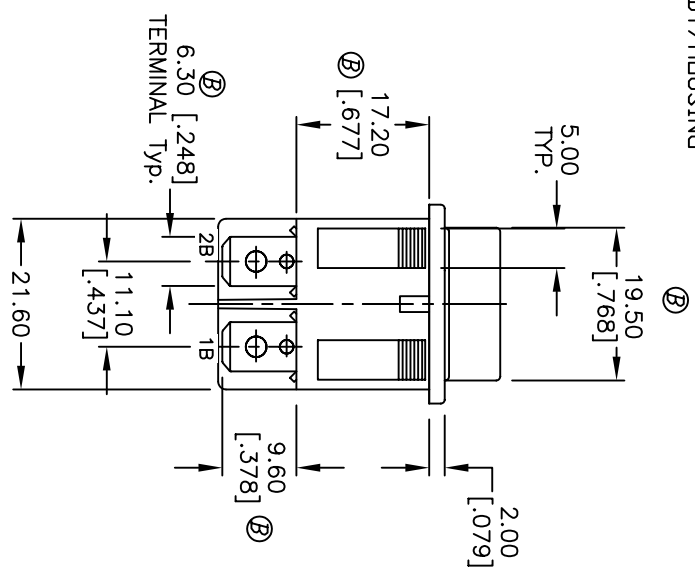
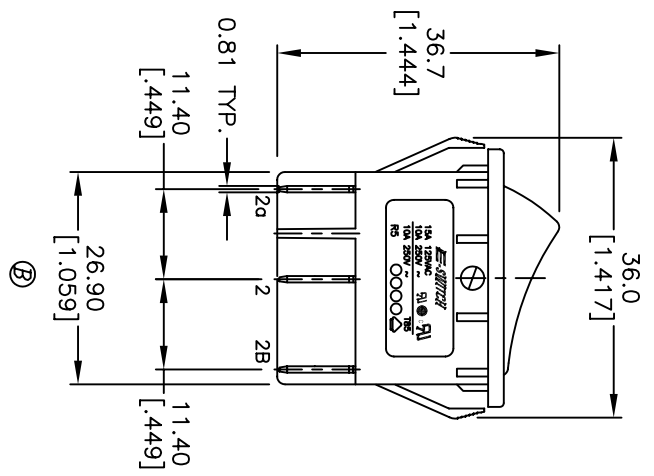
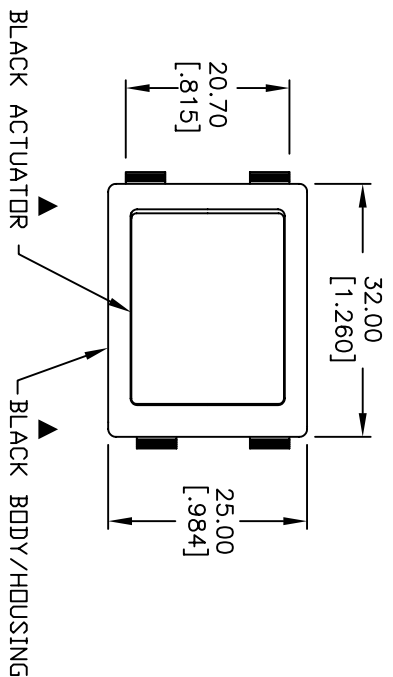
RECOMMENDED PANEL MOUNTING

NOT TO SCALE



CIRCUIT: DPDT $\text{\textcircled{B}}$
 (ON)-OFF-(ON)
 (ON) = MOMENTARY

- NOTES:
1. ALL DIMENSIONS IN MM [INCH]
 2. GENERAL TOLERANCE: X.X=±0.4
X.XX=±0.25
 3. TERM. NOS. FOR REF. ONLY
 4. RATING: 15A @125VAC;
10A @250VAC. (Normal Conditions)
 5. MATERIAL:
CONTACT SURFACE: Coin Silver, Silver Plated.
TERMINAL: Copper Alloy w/Silver plate
 6. ELECTRICAL LIFE: 10,000 cycles
 7. MECHANICAL LIFE: 30,000 cycles
 8. CONTACT RESISTANCE: <20 mILLI-Ohms initial
 9. DIELECTRIC STRENGTH: >1,500V AC 1min
>3,000V between poles.
 10. ▲ DENOTES CRITICAL PARAMETER.



E-SWITCH $\text{\textcircled{R}}$

REV.	ECN NO.	DESCRIPTION	DATE	CHKD	PH
B	15745	CHANGES NOTED	2/8/06	AR	AR
A	14128	RELEASED FOR PRODUCTION	7/1/04	AR	AR

SCALE	DATE	DR	DWG	REV
1:1	7/1/04	AR	M050240	B

THE INFORMATION CONTAINED IN THIS DOCUMENT IS PROPRIETARY TO E-SWITCH AND IS NOT TO BE COPIED OR TRANSFERRED

R5GBLKLKLEFF0