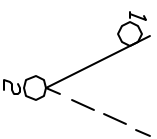


SUGGESTED PANEL CUTOUT

| PANEL THICKNESS | X |
|-----------------------|-------------|
| 0.75-1.25 (.030-.049) | 19.2 (.756) |
| 1.25-2.0 (.049-.079) | 19.4 (.764) |

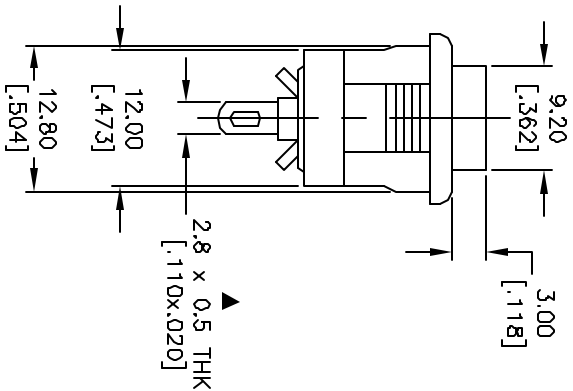
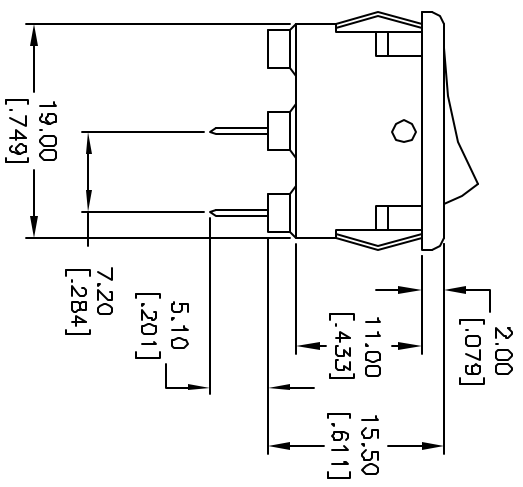
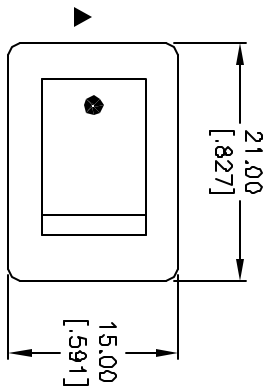


CIRCUIT: SPST

CONTACT CONFIGURATION

NOTES:

1. ALL DIMENSIONS IN MM
2. GENERAL TOLERANCE: X.X=±0.4
X.XX=±0.25
3. TERM. NOS. FOR REFERENCE ONLY.
4. RATING: 10A 125VAC/5A 250VAC
5. CONTACTS: SILVER PLATED COPPER ALLOY
6. ▲ DENOTES CRITICAL PARAMETER.



| | | | | |
|------|---------|-------------------------|---------|------|
| REV. | ECN No. | DESCRIPTION | DATE | CHKD |
| A | 13296 | RELEASED FOR PRODUCTION | 7/16/03 | AR |

| | | | | |
|-----------|---------|----|---------|-----|
| TITLE | | | | |
| RA1066ASA | | | | |
| SCALE | DATE | DR | DWG | REV |
| 1.5:1 | 7/16/03 | AR | P300201 | A |



THE INFORMATION CONTAINED IN THIS DOCUMENT IS PROPRIETARY TO E-SWITCH AND IS NOT TO BE COPIED OR TRANSFERRED