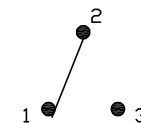
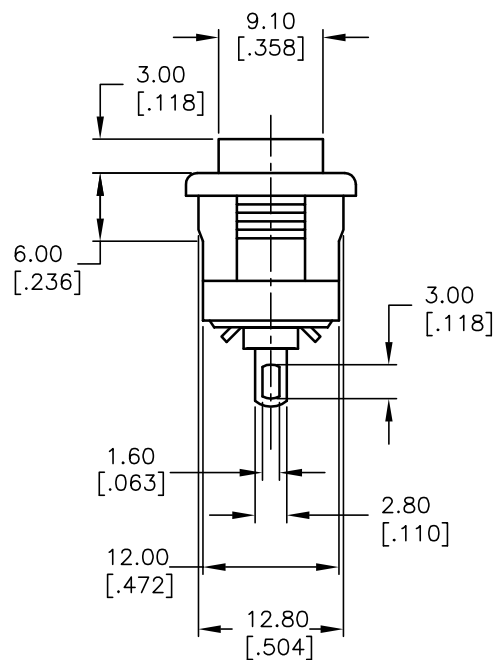
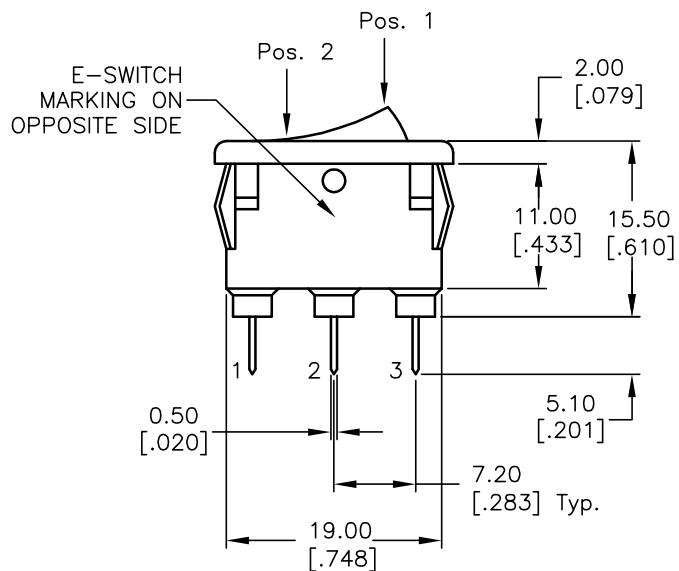


RECOMMEND PANEL MOUNTING

PANEL THICKNESS	X
0.75~1.25	19.2
1.25~2.00	19.4



CIRCUIT: SPDT
CONTACT CONFIGURATION

SWITCH FUNCTION	
POS. 1	POS. 2
ON	ON
2-1	2-3

NOTES:

1. ALL DIMENSIONS IN MM [INCH]
2. GENERAL TOLERANCE: 0.0=±0.4
0.00=±0.25
3. TERM. NOS. FOR REF. ONLY
4. RATING: 10A 125VAC/5A 250VAC
5. CONTACT RESISTANCE: 100m ohm max.
6. DIELECTRIC STRENGTH: AC 2000V for 1 minute
7. OPERATING FORCE: 400±200gf
8. LIFE EXPECTANCY: Electric: 10,000 cycle (R-L load)
Mechanical: 25,000 cycle

E-SWITCH®

TITLE

RA1066CSH

A	13647	RELEASED FOR PRODUCTION	12/10/03	AR
REV.	ECN No.	DESCRIPTION	DATE	CHKD

THE INFORMATION CONTAINED IN THIS DOCUMENT IS PROPRIETARY TO E-SWITCH AND IS NOT TO BE COPIED OR TRANSFERRED

SCALE	1.5:1	DATE	12/10/03	DR	AR	DWG	P300308	REV	A
-------	-------	------	----------	----	----	-----	---------	-----	---