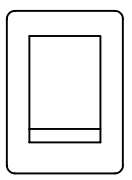
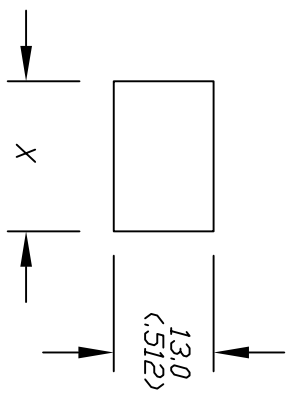


X	A	B	C	D
F	G	H	J	K



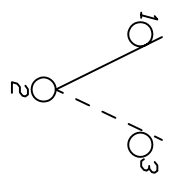
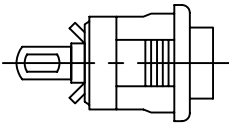
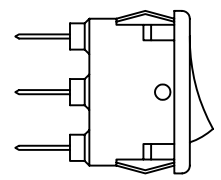
MARKING

ITEM	DESCRIPTION
P300301	RA 1066C-S-A
P300302	RA 1066C-S-B
P300303	RA 1066C-S-C
P300304	RA 1066C-S-D
P300305	RA 1066C-S-E
P300306	RA 1066C-S-F
P300307	RA 1066C-S-G
P300308	RA 1066C-S-H
P300309	RA 1066C-S-I
P300310	RA 1066C-S-J
P300311	RA 1066C-S-K



RECOMMEND P.C.B. PANEL MOUNTING

PANEL THICKNESS	X
0.75-1.25 (.030-.049)	19.2 (.756)
1.25-2.0 (.049-.079)	19.4 (.764)



CIRCUIT: SPDT

CONTACT CONFIGURATION

- NOTES:
1. ALL DIMENSIONS IN MM (IN)
 2. TERM. NOS. FOR REF ONLY

E-SWITCH

RA 1066C-S-X

REV.	DESCRIPTION	DATE	CHKD
A	RELEASED FOR PRODUCTION		

TOLERANCES	
0.0	±0.4
0.00	±0.25

TITLE	SCALE	DATE	DR	DWG	REV
RA 1066C-S-X	1:1	10/3/96	MM	P300300	A

THE INFORMATION CONTAINED IN THIS DOCUMENT IS PROPRIETARY TO E-SWITCH AND IS NOT TO BE COPIED OR TRANSFERRED