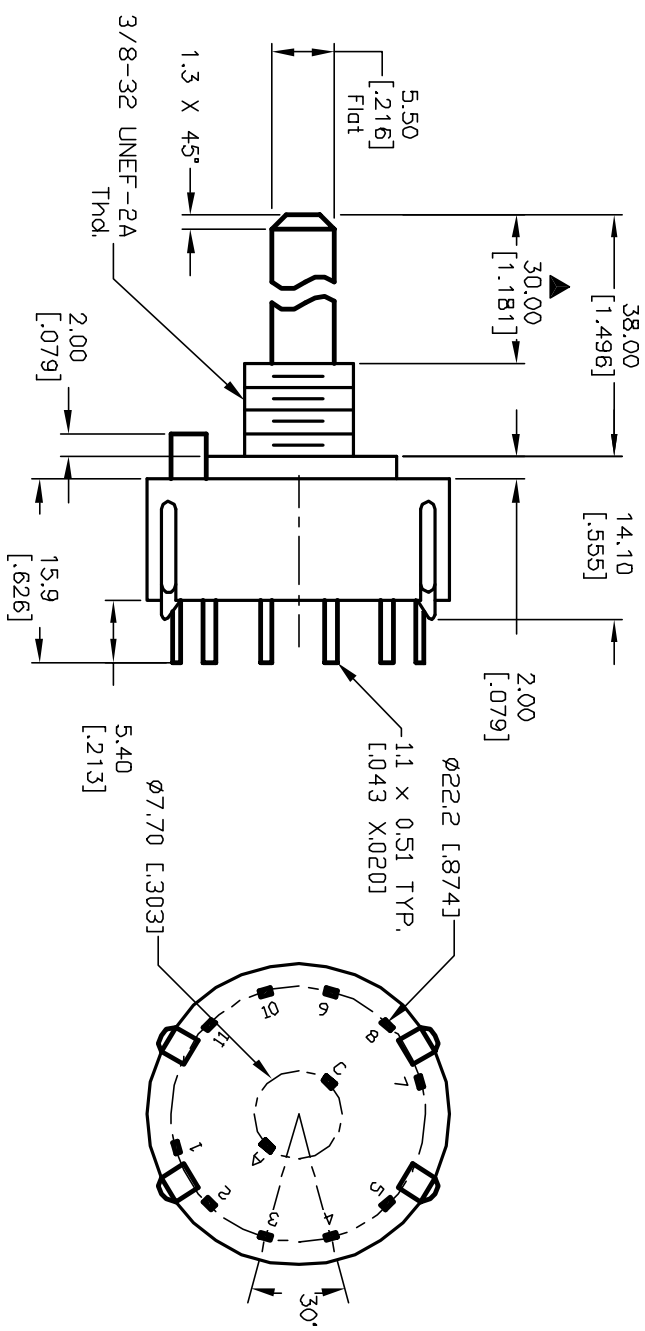
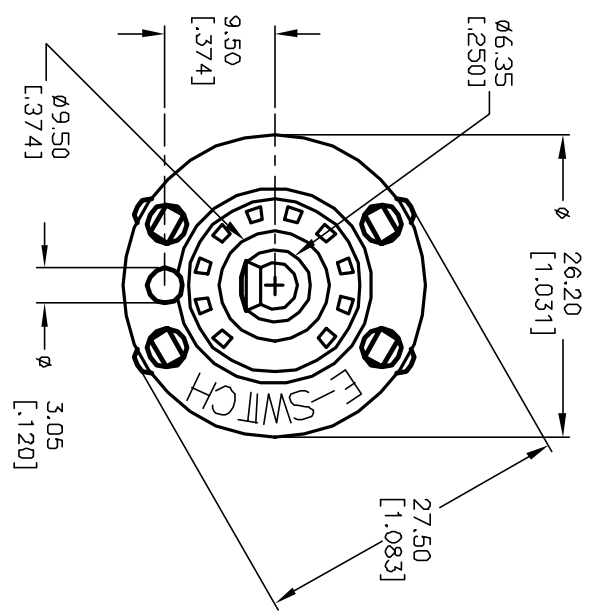
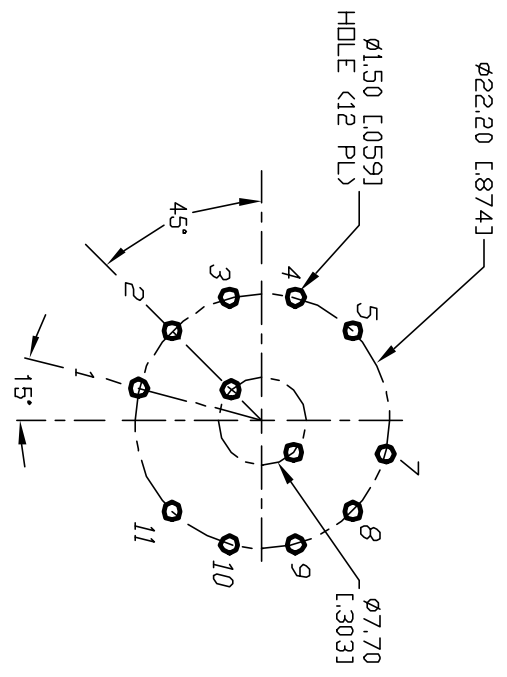
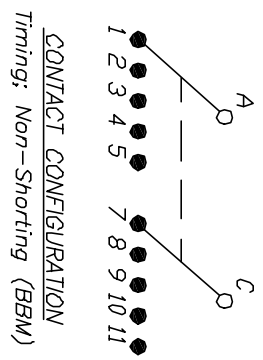


NOTES:

1. ALL DIMENSION IN MM [INCH]
2. GENERAL TOLERANCE: X.X=±0.4  
X.XX=±0.25
3. TERM. NOS. FOR REF. ONLY
4. CONTACT RATING SWITCHING: 150mA, 250V AC/DC  
350mA, 110V AC/DC
5. OPERATING FORCE: 425±100 CM/STANDARD
6. OPERATING TEMP: -30° to 85°C
7. CIRCUIT 2 Pole, 5 POSITIONS, 30° INDEX.
8. DIELECTRIC STRENGTH: 1000V RMS min. @SEA LEVEL
9. DESIGNATE MAJOR DIMENSIONS
10. SUPPLIED LOCK NUT AND WASHER (NOT SHOWN).



B		12222	REVISED DESC PER CATALOG	7/5/02	CJB	TITLE		KC-25-A-(30.0mm) 01-N-P-S	
A		11514	RELEASED FOR PRODUCTION	5/29/01	CJB	SCALE		1.5:1	
REV.		ECN No.	DESCRIPTION	DATE	CHKD	DATE		5/29/01	
						DR		CJB	
						DWG		G510896	
						REV		B	

**E-SWITCH®**

THE INFORMATION CONTAINED IN THIS DOCUMENT IS PROPRIETARY TO E-SWITCH AND IS NOT TO BE COPIED OR TRANSFERRED