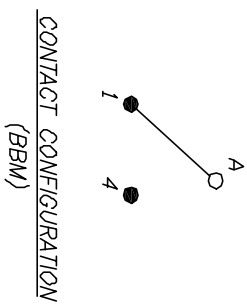


▲ HARDWARE SUPPLIED
DN SWITCH

NOTES:

1. ALL DIMENSION IN MM [INCH]
2. GENERAL TOLERANCE: X.X=±0.4
X.XX=±0.25
3. TERM. NDS. FOR REF. ONLY
4. CONTACT RATING SWITCHING: 150mA, 250V AC/DC
350mA, 110V AC/DC
5. OPERATING FORCE: 425±100 CM/STANDARD
6. OPERATING TEMP: -30° to 85°C
7. CIRCUIT SP: 2 POSITIONS, 90° INDEX.
8. DIELECTRIC STRENGTH: 1000V RMS min. @Seq Level
9. HARDWARE SUPPLIED ON SWITCH - SEE BELOW
STOP RING, LOCKWASHER, & HEXNUT
10. ▲ DENOTES CRITICAL PARAMETER.



A		13146	RELEASED FOR PRODUCTION	5/22/03	AR	TITLE		
REV.		ECN No.	DESCRIPTION	DATE	CHKD	KC54A10.001NPS		
						SCALE	DATE	DR
						1.5:1	5/22/03	AR
						DWG	G527563	REV
								A

E-SWITCH®

THE INFORMATION CONTAINED IN THIS DOCUMENT IS PROPRIETARY TO E-SWITCH AND IS NOT TO BE COPIED OR TRANSFERRED