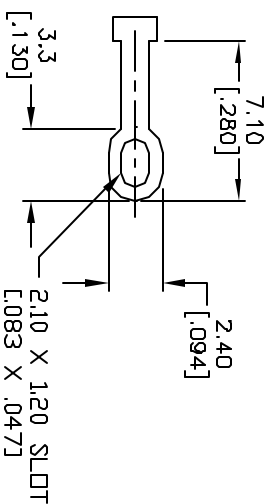


CONTACT CONFIGURATION
Timing: (BBM) Non-Shorting



NOTES:

1. ALL DIMENSION IN MM [INCH]
2. GENERAL TOLERANCE: X.X=±0.4
X.XX=±0.25
3. TERM. NOS. FOR REF. ONLY
4. CONTACT RATING SWITCHING: 150mA, 250V AC/DC
350mA, 110V AC/DC
5. CONTACT RATING (NON-SWITCHING) 5A
6. OPERATING FORCE: 425±100 CM/STANDARD
7. OPERATING TEMP: -30° to 85°C
8. CIRCUIT SP: 3 POSITIONS, 90° INDEX.
9. DIELECTRIC STRENGTH 1000V RMS min. @ SEA LEVEL
10. ▲ DENOTES CRITICAL PARAMETER
11. HARDWARE SUPPLIED ON SWITCH - SEE BELOW
STOP RING, LOCKWASHER, & HEXNUT

A	13285	RELEASED FOR PRODUCTION	7/11/03	AR
REV.	ECN No.	DESCRIPTION	DATE	CHKD

TITLE				
KC56B10.002NLS				
SCALE	DATE	DR	DWG	REV
1.5:1	7/11/03	AR	G510999	A

E-SWITCH®

THE INFORMATION CONTAINED IN THIS DOCUMENT IS PROPRIETARY TO E-SWITCH AND IS NOT TO BE COPIED OR TRANSFERRED